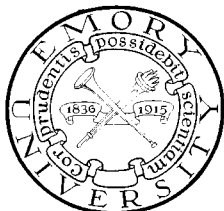
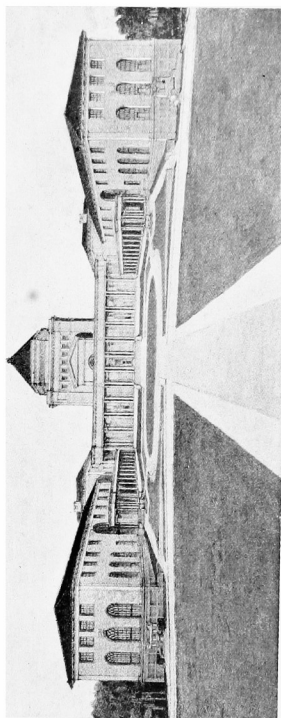


ROBERT W. WOODRUFF
LIBRARY
FOR ADVANCED STUDIES



GIFT OF

Mrs. Charles H. Williams





Emory Campus

1917



Emory's Function in the South



HE very foundation of our nation has been laid by southern men. In the days of the Revolution—and during the years immediately after—when the destiny of our country was being determined, men of the South have been predominant factors in every move for the advancement of American principles.

The great fundamental formulae for this first Americanism were ideal for a unified, symphonious civilization. Intense Christian convictions, intense devotion for womanly modesty and domestic virtue, and a jealous care for the securities of individual freedom and local government—these are the principles that have made our country, but having completed the first part of their splendid task, have almost been forgotten in many sections. Through all the digressions that caused the degradation of principles, the great Southland has kept the original tenets inviolable and cherished them. The great revival of Americanism that has swept the country during recent years has found the South in its vanguard, a logical leader.

In one phase of development of ideals, however, the South has been deplorably dilatory, for the educational side of southern people, in its higher branches, has long been neglected. Colleges are abundant enough, but when one has sought things higher and more abstruse, the eastern or northern universities have been put into requisition.

Now conditions have changed and the South bids fair to take its place in the country's march toward scrupulous intellectual development. Emory University—whose groundwork was long since laid in Emory College, and whose superstructure is now visibly, encouragingly being reared—is to take its place at the head of southern universities and parallel the nation's greatest. This is no idle theory, but an evident fact, daily demonstrated in Emory's steady growth. The long-felt, better need of our people is being realized and satisfied by this monument to culture made possible by the untiring efforts of many magnanimous, far-seeing men with the popular interest dyed deep into their great hearts.

The inconvenience incident to the attainment of complete extensive education that has discouraged many for so long a time is now being dispelled, and nowhere will glorious opportunities for this realization of the higher things of menticulture be more copious than in the South. The South must inevitably realize the value of intensified intellectual possibilities—and in years to come our people and our section of this great united country will reach the perfection of cultural facilities that will comport with the ideals and materializations evinced in other factors of national development.

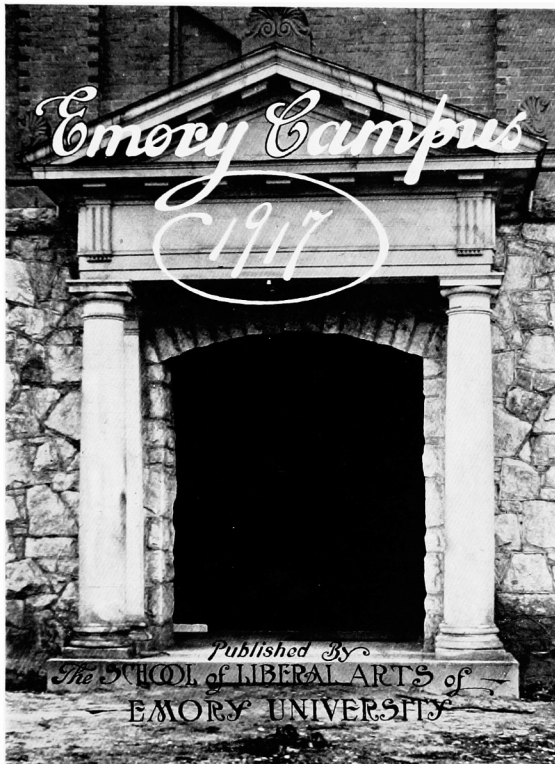
—J. PAUL WARWICK





Emory Campus

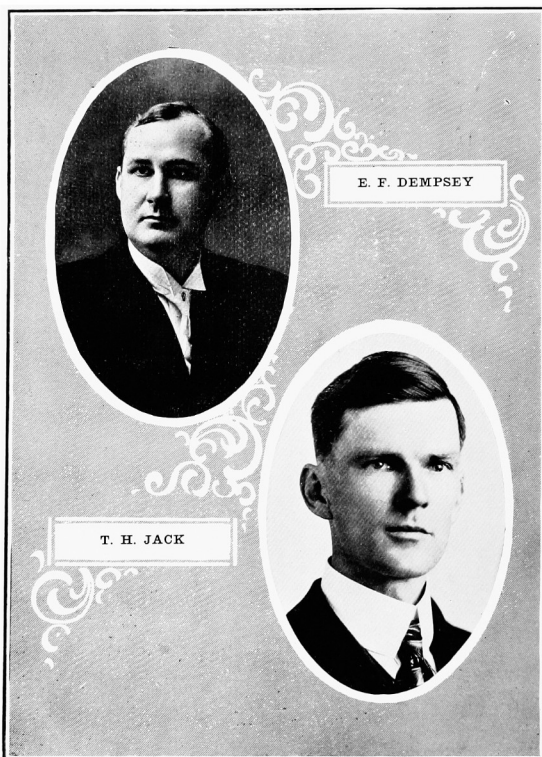
1917





Emory Campus

1917





Emory Campus
1917



Dedication

to

Clam Franklin Dempsey

and

Theodore Henley Jack

Friends and Instructors of the Class

1917

In appreciation of their untiring efforts,
this book is dedicated





Emory Campus

1917



Board of Editors

J. P. WARWICK

Editor-in-Chief

P. H. HODGE

Literary Editor

R. G. USSERY

Art Editor

A. W. MURRAY

Athletic Editor

H. V. WEEMS

Business Manager

W. E. SMITH

Assistant Business Manager

L. P. HUSBANDS

Assistant to Business Department

J. D. McCORD

Assistant





Emory Campus

1917



J. P. WARWICK
EDITOR-IN-CHIEF



H. V. WEEMS
BUS. MGR.



PAUL HODGE
LITERARY EDITOR

CAMPUS EDITORS



A. W. MURRAY
ATHLETIC EDITOR



R. GUSSERY
ART EDITOR



L. P. HUSBANDS
ADV. MGR.



J. D. MCGORD
ASSISTANT



W. E. SMITH
ASSISTANT





Emory Campus 1917



Editorial

REALIZING that an annual can be made either a credit or a detriment to a college, we have striven to put our best into the CAMPUS of nineteen seventeen. There have been worries and cares, the chief amongst them, how to get advertisements. The co-operation of the students and of the business men whose ads. appear in the back of the book have enabled us to get out a publication which we feel is a credit to this University, despite its many imperfections.

H. V. WEEMS.





Emory Campus

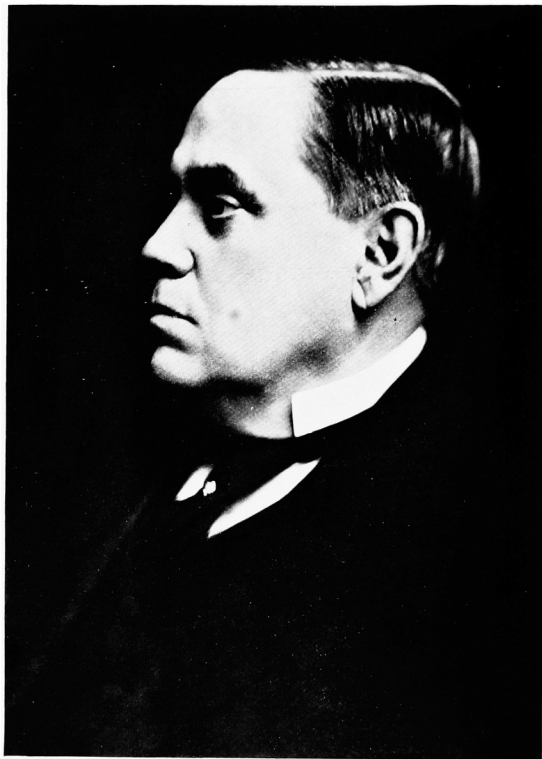
1917





Emory Campus

1917



CHANCELLOR BISHOP WARREN A. CANDLER, D.D., LL.D.





Emory Campus

1917



EDGAR HUTCHINSON JOHNSON, A.M., Ph.D.

Dean and Professor of Political

Economy

S.B., Emory College, 1891; Professor of Mathematics, Quitman College, Arkansas, 1891-'93; Student Johns Hopkins University, 1893-'95; S.M., University of Chicago, 1899; Adjunct Professor of Mathematics, Emory College, 1895-1900; Professor of History and Political Economy, Emory College, 1900-'16; A.M., Harvard University, 1903; Student University of Chicago, 1909-'10; Ph.D., University of Chicago, 1910; Dean Emory College, 1916.



ELAM FRANKLIN DEMPSEY, A.B., B.D., D.D.

Alpha Tau Omega Fraternity

Professor of English Bible

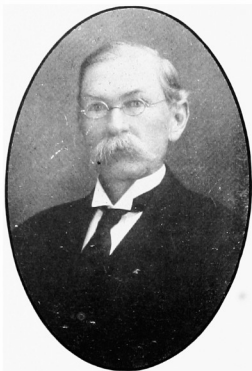
A.B., Emory College, 1899; Entered North Georgia Conference, November, 1899; Student in Vanderbilt University, Biblical Department, 1903-'06; B.D., Vanderbilt, 1906; D.D., Southern University; Professor of English Bible, 1914.





Emory Campus

1917



JOHN FLETCHER BONNELL, Ph.D.

Kappa Alpha Fraternity

Professor of Physics

A.B., Emory College, 1871, Ph.D., Southern University; Student Harvard University, 1871-72 and 1903; Co-Principal, Union Springs (Ala.) Institute, 1872-74; Principal, Milner High School, 1874-75; Professor of Natural Science, Emory College, 1875-1916.

MANSFIELD THEODORE PEED, A.M.

Beta Theta Pi Fraternity

*Professor of Pure Mathematics
and Astronomy*

A.M., Randolph Macon, 1878; Instructor in Bethel Academy (Va.), 1880-'82; Graduate Student Johns Hopkins, 1883-'85, 1887-'88; Acting Assistant Professor of Mathematics, University of North Carolina, 1889; Professor of Mathematics, Emory College, since 1889; Fellow of the American Association for the Advancement of Science; Member of the Rhodes Scholarship Committee for Georgia.





Emory Campus

1917



EDWARD KIMBROUGH TURNER, Ph.D.

Alpha Tau Omega Fraternity

Professor of Latin Language

and Literature

A.B., 1890 and A.M., 1892, Southern University; Graduate Fellow, 1893-'95, and A.M., 1895, Vanderbilt University; Head Master, Vanderbilt Training School, Bridgeport, Ala., 1895-'97; Principal Sub-Freshman Department, Emory College, 1897-'98; Adjunct Professor of Modern Languages, 1898-'99; Professor of Ancient Languages, Southern University, 1899-1900; Student at Leipzig, Berlin and Halle-Wittenburg, 1900-'02; Professor of Greek, Southern University, 1902-'03; Professor of Latin, Emory College, since 1903.



JAMES PARKS HANNER, JR., A.B.

Phi Delta Theta Fraternity

Professor of Modern Languages

A.B., Vanderbilt University, 1894; Professor of Modern Languages and History, Millsaps College, 1894-1900; Student University of Chicago, Summer 1896; Student University of Leipzig and Barcelona, 1900-'01; Professor of Modern Languages, Emory College, since 1901.





Emory Campus



GEORGE PINCKNEY STUNGLER, JR., B.Sc.,

S.B., M.I.T.

Kappa Sigma Fraternity

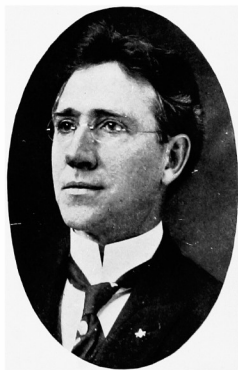
B.Sc., Mercer University, 1900; Assistant in Department of Chemistry, Mercer University, 1899-1900; Teacher in Public Schools of South Carolina and Georgia, 1900-'03; Teacher at Summer School of the South, Knoxville, 1903; Graduate Student of Agricultural Chemistry, University of Georgia, 1903-'04; Graduate Student in Department of Chemistry, 1904-'06, and B.Sc., 1906, Massachusetts Institute of Technology; Acting Professor of Chemistry, Emory College, 1906-'07; Professor of Chemistry, Emory College, since 1907.

WIGHAM FLETCHER MELTON, Ph.D.

Kappa Alpha Fraternity

*Professor of English Language
and Literature*

Student, Southern University, 1887; Licentiate of Instruction, Peabody School for Teachers, 1889; Teacher in Public Schools of Alabama and Florida, 1889-'92; President, Florida Conference College, 1892-'95; Vice-President, Nashville College for Young Ladies, 1895-'97; President, Tusculosa Female College, 1897-1903; Student and Fellow by Courtesy, Johns Hopkins University, 1903-'06; Head of Department of English, Baltimore City College, 1906-'08; Professor of English Language and Literature, Emory College, since 1908; Member Florida Conference, 1892-'95; North Alabama Conference, 1895-'96; Baltimore Conference, 1906-'08; North Georgia Conference, since 1908; Librarian Emory College, 1915.





Emory Campus

1917



JOHN BRADBURY PEEBLES, B.E.

Sigma Phi Fraternity

Professor of Applied Mathematics

B.E. in Electrical Engineering, Union College, 1906; Professor of Applied Mathematics, Wofford College, 1908-'12; Professor of Applied Mathematics, Emory College, since 1912.



WILSON GEE, Ph.D.

Professor of Biology

B.S., Clemson College, 1908; M.A., University of South Carolina, 1910; Ph.D., University of California, 1913; Assistant in Biology, University of South Carolina, 1908-'09; Graduate Student, University of Chicago, Summer Session, 1909; Assistant in Zoology and Graduate Student, University of Wisconsin, 1909-'11; Assistant Professor of Zoology, Clemson College, 1911-'12; University Fellow in Zoology, University of California, 1912-'13; Elected Instructor in Genetics, University of California, 1913; Resigned to become Professor of Biology, University of South Carolina, 1913-'14; Professor of Biology Emory College, since 1914.





Emory Campus

1917



CLARENCE EUGENE BOYD, A.B., Ph.D.

*Professor of Greek Language and
Literature*

A.B., Wofford College, 1896; Graduate Student, Vanderbilt University, 1899-1900; A.M., University of Missouri, 1901; Ph.D., University of Wisconsin, 1909; Fellow in Latin, University of Wisconsin, 1907-'08; Instructor in Public Schools of South Carolina; Instructor in Preparatory Schools of South Carolina and Tennessee; Assistant Professor of Ancient Languages, Central College, Missouri, 1906-'07; Professor of Classics, Florida State College for Women, 1909-'13; Professor of Greek Language and Literature, Emory College, since 1913.

GOODRICH COOK WHITE, A.M.

Chi Phi Fraternity

*Professor of Mental and Moral
Science*

A.B., Emory College, 1908; A.M., Columbia University, 1911; Professor of English and Instructor in Philosophy, Kentucky Wesleyan College, 1911-'13; Professor of Psychology and Education, Wesleyan Female College, 1913-'14; Professor of Mental and Moral Science, Emory College, since 1914.





Emory Campus

1917



JOHN GORDON STEFE, A.B.

Adjunct Professor of

Languages

A.B., Emory College, 1907; Alpha Epsilon Upsilon Honorary Society, Emory College; Professor at Candler College, Havana, Cuba, 1907-'10; Adjunct Professor at Emory College, since 1911; Acting Principal Sub-Freshman Department, 1913-'14, and Director of Gymnasium, 1913-'14.



NOLAN A. GOODYEAR, A.M.

Adjunct Professor of

Languages

A.B., Emory College, 1904; A.M., Emory College, 1907; Principal Palmer Institute, 1904-'05; Assistant Roanoke Normal College, 1905-'06; Principal Waycross High School, 1906-'07; Student Harvard School of Physical Training, 1908; Adjunct Professor of Languages and Director of Physical Education, Emory College, since 1908; Student University of Grenoble, France, 1913-'14.





Emory Campus 1917



DOUGLAS RUMBLE, A.M.

*Adjunct Professor of
Mathematics*

A.B., Emory College, 1904; Teacher, Broxton, Ga., 1904-'05; Adjunct Professor of Mathematics, Emory College, 1905-'07; A.M., Emory College, 1907; Graduate Student, Harvard University, 1907-'09; A.M., Harvard University, 1908; Acting Professor of History and Economics, Emory College, 1908-'10; Adjunct Professor of Mathematics, Emory College, 1910-'14; Professor of Mathematics, Southwestern University, 1914-'15; Adjunct Professor of Mathematics, Emory College, since 1915.

T. H. JACK

Professor of History

A.B., University of Alabama, 1902; A.M., 1903; Classical Master, Sewanee Grammar School, University of the South, 1903-'06; Peabody Fellow in Economics, Tulane University, 1906-'07; Graduate Student, Harvard University, 1907-'09; University Scholar, Harvard, 1907-'09; Assistant in Government (International Law), 1908-'09; A.M., Harvard, 1908; Graduate Student and Instructor in History, University of Chicago, 1915; Alumni Professorship in History, Southern University, Greensboro, Ala., 1909-'16; Professor of History, Emory University, 1916.





Emory Campus

1917



J. H. HINTON

Associate Professor of English

A.B., Emory College, 1906; Scholastic Fellow, Graduate School, Vanderbilt, 1906-'07; A.M., 1907; Teacher, Vanderbilt Training School, Elkton, Ky., 1907-'08; Professor Greek and Latin, Centenary College, Shreveport, La., 1908-'10; Head Department of Languages, Boyd High School, 1910-'11; Student Harvard University, 1911-'15; A.M., 1912; University Scholar, 1912-'13; Thayer Fellow and President Modern Language Conference, 1913-'14; Edward Austin Fellow, 1914-'15; Ph.D., 1915; Frederick Sheldon Traveling Fellow to the British Isles, 1915-'16; Studied in British Museum, Bodleian Library, Oxford, and in University College, Dublin; Associate Professor of English, Emory University, 1916.





Emory Campus 1917



Fair Emory

By W. EUGENE ROGERS

Fairest Emory, learning's child,
Of care and duty wrought,
Leads us on to higher things
With ne'er a wav'ring thought.

No other honor do we seek,
We want no fonder memory
Than to have been right loyal sons
Of our beloved Emory.

Oh, guidance fair, oh spirit pure,
Of wisdom full and free,
Abide thy teachings in my soul,
And let me rest in thee.

And when we leave thy hallowed sphere,
The worldly ways to see,
Oh, give us strength, which we may need,
To live for Emory.

Our code in all, upon the land,
On desert, or at sea,
Will be: to cleave unto the right,
Our God, and Emory.

So when we reach that Destined Day,
When all rejoice and sing,
Our banner shall ascend the heights,
Fair Emory's anthem ring.

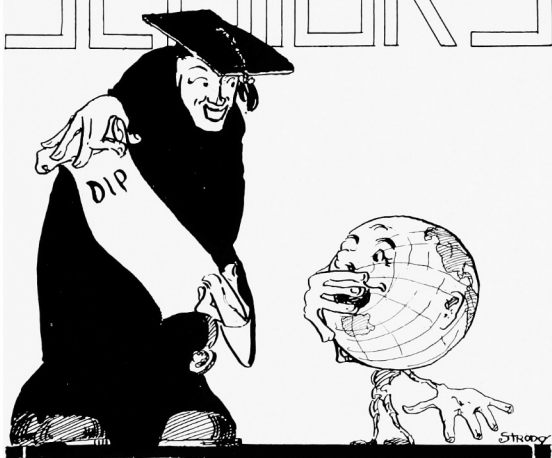




Emory Campus
1917



SENIORS





Emory Campus
1917



History of Senior Class



WHEN one becomes intimately bound up with some worthy enterprise so that it is almost a part of himself, it is the keenest pleasure imaginable to see that thing grow, to expand in countless directions and to become something really great. To watch a transition from a smaller to a larger life must always enlist the interest of the observer in the object, and if he can feel that he has been in a measure a contributing factor to its growth he is gratified at its development and solicitous for its future expansion.

It is in some such way as this that the class of '17 has journeyed on its four-years' course in the halls of this institution. We are the heirs of two dispensations: the old and the new. We found our institution a college, great in its way, but inadequate for the new conditions, which are changing so many things for the better. We have watched the germination of a new and a greater institution, Emory University, and we have seen it bud into the beginnings of a promising plant in the garden of the intellectual world. And so we feel that in some manner we are identified with this expansion, and as we come to the close of a well-spent career we seem to have our souls so interwoven in its make-up that a tearing asunder almost portends to be disastrous and our heightened kinship is reluctant to let us leave the object of our affection.

Fellow workers are necessarily sympathetic and largely of like minds. To strive side by side begets a peculiar comradeship which nothing else can foster or maintain. We have not been perfect and yet we are conscious of a common purpose which over all our errors must in the end surmount the petty hindrances and rise to a worthy position of attainment.

Our athletic record is no small thing of which to speak—two football championships, one laurel of pre-eminence in basket-ball, a relay pennant in our freshman days, and distinction in track and baseball make us no weaklings.

Scholarship has not been entirely despised by us, for two of our number are members of Alpha Epsilon Upsilon, Honorary Society, a fact which speaks for itself. We furnished two-thirds of the intercollegiate debating team this year and it is safe to assert that some of our men will distinguish themselves in after life as wielders of our mother tongue. The muses have not scorned us for we can boast a poet whose songs have found their way into a book of authorized repute and national recognition.

Into the unexplored stretches of tomorrow our members will choose their varied paths, well fitted for the emergency which may test our nerve and intellect, and as we take many a glance into the sacred memories of yester-years they will serve to strengthen and to guide us better on our way. For of all the wonderful faculties which go to tell us we are immortal, which speaks the sublime truth more eloquently than memory? And so the parting, though filled with throbs of sadness in a great degree, will be somewhat softened by the recollection of a race well run.

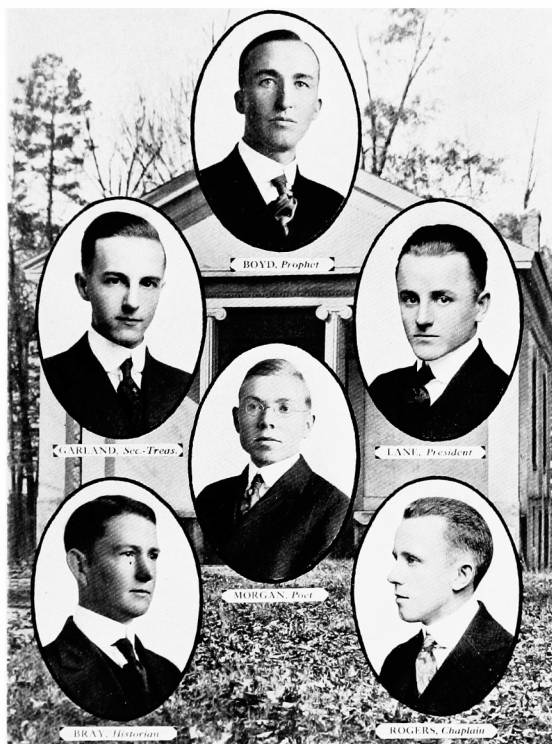
PERCY A. BRAY, Historian





Emory Campus

1917





Emory Campus

1917



"Man wants but little here below,
Nor wants that little long."

"A combination, and a form, indeed,
Where every god did seem to set his seal,
To give the world assurance of a man."

W. L. BAZEMORE, Ph.B.
MACON, GA.

Pi Kappa Phi Fraternity; Pan-Hellenic Council; Associate Editor Emory Weekly; Y. M. C. A.; Baseball Team, '15; Relay Team, '15-'17; Chairman Publication Committee, '17; Central Board; Bachelors' Club; President of Stock Exchange; "Piedmont Driving Club."

Short in stature: 'tis true, but far from being short in those qualities that make one loved by all. Wallace is a man who possesses loyalty in such a degree that everybody takes notice of it—especially during football season. He wears a veil of solemnity that belies his inward musings and philosophizings until he utters some of those laugh-provoking droveries that make him a notable personage. Greek Life is a passion with Wallace, which fact is indicative of another of his merits: he knows a good thing when he sees it.

GEORGE HUGH BOYD, A.B.
FAIRBURN, GA.

Non-Fraternity; I. V. S. Senior Society; Y. M. C. A.; Few Literary Society; Member Mission Study Committee, '14-'15; Chairman of Mission Study Committee, '15-'16; President Y. M. C. A., '16-'17; Delegate Southern Students' Conference, '16; Vice President Few, '16; Chairman Board Directors Few, '16; President Few, '16; Freshman-Sophomore Debate, '15; Freshman-Sophomore Debate, '14; Fall Term Debate, '15; Judicial Committee, '15-'16; Chairman Judicial Committee, '16-'17; Class Prophet, '15-'16-'17; Honor Roll, '14-'15; Junior Commencement Speaker, '16.

Snobery nor vain show is a part of him, so his pet appellation, "Dude," is nothing more than the uncontrollable lute of a surname, and its local associations. His charming baritone voice is a delight to all who hear it, but it is far from being his gift. A subtle ingenuity in all he undertakes, and a consequent success have marked his college life. "Dude" has friends on all sides, and is a friend to all. For four years he has carried on "ruthless warfare" against an inquisitive faculty, and has met with few, very few reverses.





Emory Campus

1917



"Hark to that shrill, sudden shout,
The cry of an applauding multitude,
Swayed by some loud-voiced orator who
wields
The living mass as if he were its very
soul!"

"Describe him who can,
An abridgement of all that was pleasant
in man."

PERCY A. BRAY, A.B.
NORWOOD, GA.

Delta Tau Delta Fraternity; Phi Gamma Literary Society; Pan-Hellenic Council; Y. M. C. A.; I. P. A.; Young Harris Club; Baseball Team, '15-'16-'17; Temperance Oration Medal, '15; Fall Term Debate, '15; Assistant Treasurer Phi Gamma; Treasurer Phi Gamma, '15-'16; Relay Team, '15-'17; Washington Birthday Orator, '16; President Phi Gamma, '17; Junior Respondent Senior Dismissal; President I. P. A., President Young Harris Club, '17; Impromptu Debate, '15-'16; Y. M. C. A. Cabinet, '16-'17; Business Manager Emory Phoenix, '16-'17; Historian Class, '15-'16, '16-'17; Champion Debate, '17; Senior Commencement Speaker.

Ever ready to make a good speech—on any topic, or to contend in debate—on either side, Percy is indeed the present-day exemplification of that ideal the ancient Sophists strove after. And too, he feels as much at home among his books as when on the platform, happily haranguing his attentive audience. One tiny fault: An absolute inability to make his alarm clock coincide with the standard by which "eight o'clocks" are measured. This is of small import, however, for Percy seems to be a strong advocate of "preparedness," even in class room.

PRESLEY W. CHRISTIAN, Ph.B.
NEWNAN, GA.

Alpha Tau Omega Fraternity; Football Team, '13-'14-'15-'16; All Emory Football Team, '13-'14-'15-'16; Manager Football Team, '14; Captain Football Team, '16; Relay Team, '17; Pan-Hellenic Council, '16-'17.

Everybody knows what a bulwark of strength Presley has been to his football team since his advent into these classic environs, but few know how much sound judgment and common sense are stored in his innermost thoughts. For he possesses that exceptional and admirable quality of not telling all he knows. He speaks when he has something to say, and the something is always worthy of consideration. Presley looks lazy, it must be confessed, but he has never been known to dodge a task. If we are right in presuming that this slight inaptitude for Solid Geometry hasn't got him in bad with the faculty—Presley can count the whole student body and faculty as his friends.





Emory Campus

1917



"Silence is the perfectest herald of joy;
I were but little happy, if I could say
how much."

"And, when a body's in the case,
You know, all other things give place."

JAMES RUDOLPH CLEMENTS, B.S.
EASTMAN, GA.

Delta Tau Delta Fraternity; Phi Gamma Literary Society.

Rudolph never has much to say, and here is good evidence of the desirability of silence as a manly attribute. For the word failure is not in his vocabulary. Much worrying is evident among most students about the quantity of notes they possess, but no such worry is catalogued in Rudolph's thoughts. His opinions are always worthy of an audience—and get it. He is a bear for work, and always has the air of a man who has a definite aim in view and a firm determination to attain it. A modest supposition is that in this case appearances are not deceitful.

NELSON F. DICKEY, A.B.
LOUISVILLE, KY.

Sigma Nu Fraternity; "Owl's" Social Club; Susie Dahm Social Club; Football Team, '15; All-Emory Football Team, '16; Basket-ball Team, '17; All-Emory Basket-ball Team, '17; Baseball Team, '16-'17; Manager Football Team, '16; Captain Basket-ball Team, '17; Relay Team, '16; O. G. Melton Athletic Medal, '16; Secretary and Treasurer Pan-Hellenic Council, '16; Vice-President Pan-Hellenic Council, '17; Business Manager Whompus, '17; Bachelors' Club.

"Dad" is an excellent example of the "all-around college man." One of Emory's most versatile and efficient athletes; a man possessed of an untiring and ever-appreciated wit and good nature, one of a personality that blends perfectly into any environment. Liked by all, admired by most, he enjoys a lion's share of popularity among faculty and students. He is confessedly gripped by a fondness for the sweeter sex, and he seems to succeed right well in his *amorous domain*. His insatiable mania for short trips hither and thither is easily, oh, very easily, explained.





Emory Campus

1917



"Thy modesty's a candle to thy merit."

"Know when to speak—for many times it
brings
Danger to give the best advice to kings."

ALEX. B. FLIZER, A.B.
HILLSBORO, GA.

Few Literary Society; Young Men's Christian Association; Football Team; Relay Team.

After about a year's absence, Alex returned to us last fall, and has faithfully sustained his merited reputation as a good, hard worker and a man with guts of sense—common and book. He does his work with an ideal interest that can well be set up as a criterion for posterity to strive after. Besides being one of Emory's most excellent students, he did good work in the line of the senior football champions. His passion for work is as evident on the athletic field as in his imbibings from the Pierian spigot, and his loyalty to duty smacks of a permanency that will eventually bring success.

J. COLIN ENGLISH, Ph.B.
ALMA, FLA.

Delta Tau Delta Fraternity; Phi Gamma Literary Society; Florida Club; Y. M. C. A.; Secretary and Treasurer Class, '12-'13; Class Poet, '13-'14; Freshman-Sophomore Debate, '13; Fall-Term Debate, '14; Basket-ball Team, '13-'14-'15-'16; Manager Basket-ball Team, '15; Football Team, '13-'14-'15-'16; All-Emory Football Team, '14-'15-'16; Manager Football Team, '15; Special Gym., '13-'14-'15; Secretary and Treasurer Florida Club; President Florida Club; Pan-Hellenic Council; Welcome Address Phi Gamma, '16; Impromptu Debate, '16; Relay Team, '15; Member Central Board, '15-'16; Vice-President Student Body.

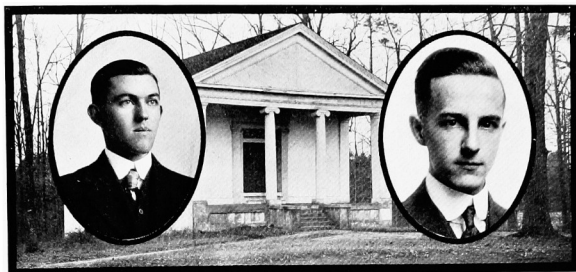
Florida, the land of flowers and northern tourists (not to mention a reputation for mail orders), has here given us a man who has made his influence felt in wide and varied fields of college activity. On the football field he has been a veritable stone wall to opposing backs who had unsatisfied desires to catapult through the line of '17. On the campus he is recognized as one worthy of consideration as a factor in each new endeavor. Politics have oft held his attention and success has oft rewarded him.





Emory Campus

1917



"None but himself can be his parallel,"

"Titles of honor add not to his worth
Who is himself an honor to his titles."

FLORENCE M. GAINES, A.B. HARTWELL, GA.

Non-Fraternity; D. V. S. Senior Society; Few Literary Society; Mid-Term Debate, '15; Fall Term Debate, '15; Impromptu Debate, '15-'16; President, Vice-President, Chaplain, Chancellor, Board of Directors Few Society; Intercollegiate Debate Council, '15-'17; Vice-President and Chairman Religious Committee Y. M. C. A.; Vice-President and Secretary Ministerial Association; Vice-President I. P. A.; Temperance Contest, '15; Delegate Students' Conference, '15; Y. M. C. A. Historian; Junior Commencement Orator, '16; Junior Oration Medal, '16; Associate Editor Emory Weekly, '16; Welcome Address to New Students, '16; Speaker Senior Dismissal, '16; Few Oration Contest, '16; Intercollegiate Debate Davidson College, '17; Speaker Senior Banquet, '17; Senior Commencement Orator, '17.

Gaines is a chronic "shoot-em-up" and an inveterate orator. Profs. and "worthy opponents" alike fear his wondrous array of co-ordinated reason and his flawless manner of transferring his knowledge to his fellow man. A certain solemnity of thought that Florence possesses makes his opinion and counsel almost revered in the sight of his friends. And the word friend here is an inclusive term. No man can bear a grudge against the congenial, industrious Gaines, for he is always ready to take his share of any burden—his or another's. Any prediction that didn't foresee success for him would immediately rank the pained prophet as an imbecile.

HALSEY SIMS GARLAND, A.B. GRIFFIN, GA.

Kappa Alpha Fraternity, D. V. S. Senior Society; Alpha Epsilon Upsilon Honorary Society; Phi Gamma Literary Society; President Student Government Association; Intercollegiate Debater Davidson, '17; Track Team, '15; Manager Track Team, '16; Basket-ball Team, '17; Relay Team, '15; Baseball Team, '16; President, Secretary, Censor Morum Phi Gamma; Honor Roll, '14-'15-'16; Beta Omicron Phi Social Club; Susie Dahm Social Club; "Owl's" Social Club; Pan-Hellenic Council, '15-'17; President Pan-Hellenic Council; Central Board; Orchestra, '13-'14; Freshman, Sophomore, Junior, Senior Commencement Speaker; Sophomore Commencement Medal; Freshman, Sophomore Debate; Mid-Term Debate, '14; Impromptu Debate, '15-'16; "Knoblers" Club; Secretary and Treasurer Junior and Senior Class; Senior Valedictorian; Senior Banquet Speaker.





Emory Campus

1917



"O, what may man within him hide,
Though angel on the outward side!"

"Describe him who can,
An abridgment of all that was pleasant
in man."

PAUL H. HODGE, Ph.B.
ELCO, GA.

Sigma Nu Fraternity; Few Literary Society; Y. M. C. A.; Member and Vice-President
Gordon Club; Literary Editor EMORY CAMPUS, '17.

Paul has almost become a fixture on the campus. Though not boisterous he has managed to make his presence felt among us. Some men love fame; some men love money; while even others make so bold as to love woman; but Paul has a greater passion—Analyst is his daily joy, his nocturnal pleasure.

HENRY H. HUDSON, Ph.B. (Special)
OXFORD, GA.

Delta Tau Delta Fraternity; Phi Gamma Literary Society; Glee Club; Orchestra; Quartette; Y. M. C. A.; Delegate Georgia Students' Association; Y. M. C. A. Conference, University of Georgia, '13; Atlanta Club; Imps Social Club; Tennis Club; Class Prophet for Junior-Senior, '14-'15; Pan-Hellenic Council.

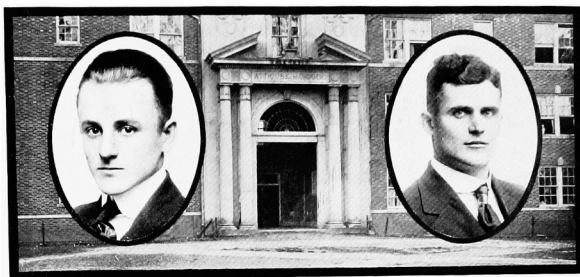
After holding pedagogical sway over the youth of Lithonia for some time, Hehnie comes back to us to demonstrate that his college enthusiasm was not to be denied. With a distinct air of "minding his own business" he goes about his daily duties with that calm dignity so becoming to a senior. We would characterize him as "a man with a purpose."





Emory Campus

1917



"Get money; get money, boy;
No matter by what means."

"He above the rest
In shape and gesture proudly eminent,
Stood like a tower."

FOUNT R. LANE, B.S. ROANOKE, ALA.

Alpha Tau Omega Fraternity; D. V. S.; Phi Gamma Literary Society; "Owl's" Social Club; Chi Sigma Chi Social Club; President Class, '15-'16, '16-'17; Basketball Team, '14-'15; Manager Basketball Team, '15; Athletic Committee, '14-'15, '15-'16; Chairman Athletic Committee, '16-'17; Baseball Team, '14-'15-'16; Manager Baseball Team, '14; Captain Baseball Team, '15-'16; All-Emory Baseball Team, '14-'15; Central Board; Football Team, '14-'15; President Pan-Hellenic Council; Alabama Club; Toastmaster Senior Banquet; Bachelors' Club; Office Boy Whompus, '17.

"Fritz" is by far one of the most likable men in college. He has covered himself with glory by the effective manner in which he handles that tricky spheroid commonly called baseball. Aside from the athletic and social sides of his nature must be mentioned his rare executive ability—yes, he was once president of the Fish Club, an organization which has passed out of existence despite the earnest efforts of its ex-president. "Fritz" intends, at present, to go on the road as a salesman, and we affirm that whether his line be selling winter furs to inhabitants of equatorial regions or evening gowns to Esquimaux he'll do a rushing business.

JOSEPH W. LEE, A.B. LONG OAK, GA.

Non-Fraternity; Few Literary Society; Relay Team, '12-'13-'16-'17; Field Day, '12-'13-'16-'17; Special Censor Few, '15; Y. M. C. A.; Ministerial Association; Education Club; Class Post, '12; Special Gym., '12; Young Harris Club; Intercollegiate Track Team, '15-'16-'17.

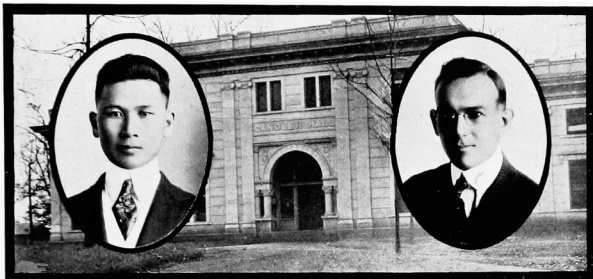
Six feet four in his bare feet, stand, this ministerial Hercules. "Big 'un's" favorite recreation is nonchalantly tossing the 16-pound hammer into space. Such athletes as fill the sporting pages of the Southern newspapers by their deeds, have remarked on the flawless "form" Joe displays in this pastime. This modest giant is a hard worker, in fact one of the most consistent on the campus. While no demonstrative pedant, he gets off his work and having done so retains it.





Emory Campus

1917



" 'Tis good will makes intelligence."

"Lest man suspect your tale untrue,
Keep probability in view."

DOO WHA LIM, Ph.B.

PING YANG, KOREA

Few Literary Society; Y. M. C. A.; Welcome Address Few Anniversary, '15; Few Anniversary Orator, '16; Member Ministerial Association; Financial Committee, Y. M. C. A., '15-'16; Secretary Y. M. C. A., '16-'17; Vice-President Few; President Few; Censor Morum Few; Leader Mission and Bible Study Classes, '14-'15-'16; Freshman-Sophomore Debate, '15; Sophomore Commencement Speaker; Delegate Y. M. C. A. Convention, Oxford, '14; Delegate G. S. M. L. Convention, La Grange, '14; Speaker same Convention; Delegate G. S. M. L. and Y. M. C. A. Conventions, Cox College, '15; Delegate Y. M. C. A. Summer Conference, Blue Ridge, '15-'16; Vice-President Reinhardt Social Club; Football Team, '15; Special Gym., '16; Impromptu Debate, '16; Relay Team, '16-'17; I. P. A.; I. P. A. Delegate Macon Convention, '17; Chairman Greater Emory Committee, '16-'17; Board Directors Few.

Though coming from far-off Korea, Lim has thrown himself into the student activities of Emory with a vim that might be envied by many a native son. His work since he has been amongst us has been of a first-class order. Even the staunchest of profs, quail before the merciless bombardment of his scholastic artillery. He is going back to his native land a few years hence to give his life to a missionary work among his fellows, and if he conducts himself with that earnestness and determination with which he has gone into his work here he will count for a great deal toward the religious emancipation of his countrymen.

JEFFERSON DAVIS McCORD, Ph.B.

ATLANTA, GA.

Phi Delta Theta Fraternity; Sigma Upsilon Literary Fraternity; "Ovi's" Social Club; Bachelors' Club; Pan-Hellenic Council; Phi Gamma Literary Society, Editor-in-Chief Emory Weekly, '16; Elected Literary Editor Phoenix, '15; Art Editor Annual, '15, Basketball Team, '15; Manager Basketball Team, '15-'17; Baseball Team, '15; Football Team, '11-'13-'14-'16; Relay Team, '11-'17; Y. M. C. A., Regulator Club.

"Jeff" is indeed a local institution. Whether it is a matter of frightening freshmen with an "amputated finger," or singing "twilight" serenades from long-forgotten operas, he is always there with the pep. His ready wit and jovial disposition account for the fact that he has been elected chairman of the "Bull" Convention. If it were asked us our estimate of the man, we would reply: "He is a typical college man going out into the world to lighten the load of suffering humanity with the sunshine of his personality." But if you were to ask the man across from me, he would tell you something entirely different, perhaps, for he is a many-sided man.





Emory Campus

1917



"A true, nobler, truster heart,
More loving, or more loyal, never beat
Within a human breast."

"A verse may find him who a sermon flus,
And turn delight into a sacrifice."

JAMES PAUL McNATT, A.B.
LYONS, Ga.

Kappa Alpha Fraternity; Phi Gamma Literary Society; "Owl's" Social Club; Member Publication Committee, '14-'15; Special Gym, '15; Assistant Business Manager, Emory Weekly, '15-'16; Spring Term Debater, '16; Official Basketball Scorer, '15-'16-'17; Relay Team, '15-'16; Bachelors' Club; Manager Baseball Team, '17; President Phi Gamma; Pan-Hellenic Council, '16-'17; Business Manager Emory Weekly, '16-'17; Football Team, '16; Basketball Team, '16-'17; Baseball Team, '15-'16.

How can you expect a man to grow tall when he is borne down by the oppressing cares incident to "coming out" with the Weekly. The ad famine has practically driven him to distraction, but still there remains in him a very dynamo of energy and versatility. Despite his shortcomings in size, "Mac" has been a mainstay in every branch of class athletics. One would probably think that his studies would suffer because of the multiplicity of his other duties. Far from it: He manages not only to keep up with his work, but is usually a little ahead.

THOMAS N. MORGAN, Ph.B.
ASHURN, Ga.

Sigma Upsilon Literary Fraternity; Y. M. C. A.; Editor-in-Chief Emory Phoenix, Few Literary Society; Poet of Class, '17; Delegate to G. S. M. L. and Y. M. C. A. Conference; Spring Term Debate, '16; Relay Team, '15; Junior Commencement Speaker; President, Vice-President and Member Board of Directors Few; Speaker at Senior Banquet; Few Respondent to Welcome Address, '16; Senior Commencement Speaker; Few Anniversary Poet, '16; Honor Roll, '15-'16; Y. M. C. A. Cabinet; Chancellor Few.

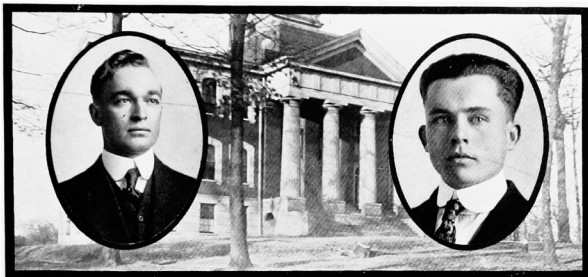
What Sappho was to the early Greeks, what Homer was to those same people at a later time, what Chaucer and Shakespeare were to England, just that much is Tommie to us. You would not at a first glance think him a poet, but once he has invigilated you into conversation you cannot fail to note the poetic fire in his veins. Though a bit sentimental, he has in him the elements of a true poet. He intends to teach, but we believe he will leave that and go to the broader and more fascinating field of poetry.





Emory Campus

1917



*"Taste the joy
That springs from labor."*

*"There's no art
To find the mind's construction in the
face."*

A. W. MURRAY, A.B.
BRONWOOD, GA.

Non-Fraternity; Member Few Literary Society; Treasurer and Assistant Treasurer Few Society; President Few; Chairman Board of Directors Few; Mid-Term Debate, '16; Member Publication Committee, '16; Athletic Editor Annual, '17; Y. M. C. A.; Finance Committee, Y. M. C. A., '17; Football Team, '15-'16; Basket-ball Team, '17; Baseball Team, '16; Special Gym, '14-'15-'16; Junior Commencement Orator; Senior Commencement Orator; Relay Team, '15; Champion Debate, '17.

Murray doesn't say much; in fact, he never says anything that means nothing. He goes about his work with a silent vim that has rewarded him with success. He was a member of the rather depleted—numerically—football team of the seniors, and added his quota to the work that was necessary to win the championship. Murray's efficiency, coupled with a winning personality, has made him many friends.

W. E. PAFFORD, Ph.B.
MILLTOWN, GA.

Non-Fraternity; Ministerial Association; Few Literary Society; Y. M. C. A.; Vice-President Few; Mid-Term Debate, '16; Corresponding Secretary Few; Member Publication Committee, '16; Board Directors Few, '16; Football Team, '15-'16; Censor Morum Few; Relay Team, '17; President Few; Chancellor Few, '17; President of Sparks Club.

Another of the comparatively large number of seniors who can't attribute their success to a colossal build. In athletics, this didn't worry Pafford, for he was as efficient a center as Emory's stock of football material provided. His pluck on the gridiron was one of the outstanding factors of his seasons of playing. Few society could scarcely do without Pafford now, and the new recruits will have to be extraordinary to fill the place made vacant by his graduation. He never has to worry about his standing in studies, for his willingness to work makes all tasks look small to him.





Emory Campus

1917



*A foot more light, a step more true,
No're from the heath flower dash'd the
dew."*

*"He was a man, take him all in all,
I shall not look upon his like again."*

LEONARD P. ROGERS, B.S. WARRENTON, GA.

Sigma Nu Fraternity; Phi Gamma Literary Society; "Owl's" Social Club; Chi Sigma Chi Social Club; Freshman Commencement Speaker; Sophomore Commencement Speaker; President Class, '14-'15; Chaplain Class, '15-'16; Pan-Hellenic Council, '15-'16, '16-'17; Sophomore Banquet Speaker; Baseball Team, '14-'15-'16; All-Emory Baseball Team, '14; Track Team, '14; Intercollegiate Track Team, '15.

"Tup," though small in stature, is indeed a veritable pepper box. In the realm of athletics he has shown that even though greatly lacking in avoirdupois he has made the baseball and track teams, showing the general public that after all size counts for very little. In society he is one of the old guard, having gained no little renown as a follower of that lovely and entrancing muse—Torsischore. "Pup" is a quiet sort of a chap, but he evidently stays on the job or he would never have landed such offices as dux and chaplain of his class. Though not official we understand that the people around Warrenton were greatly elated to learn of his election to the office of chaplain last year, which was evidently achieved through merit.

HENRY RUFUS ROSE, A.B. COVINGTON, TENN.

Non-Fraternity; Ministerial Association; President Ministerial Association; Y. M. C. A.; Baseball Team, '16-'17; All-Emory Baseball Team, '16; Football Team, '16; Basket-ball Team, '16; Die Astronomische Gesellschaft.

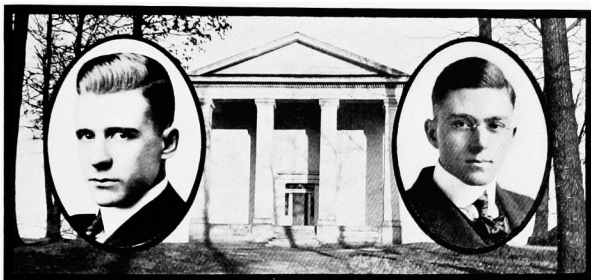
"Randolph" is one of the most promising theologs now in our midst—and there are many. From his conduct you would never imagine that he was closely related to that gentleman whose chief occupation is the making of those beverages that once in close connection with your interior make you care not whether you sell the Candler building for a dime or ten cents. With an unusual amount of "pop" Rose should make his presence felt in the ranks of the circuit-riders.





Emory Campus

1917



*"Your deeds are known
In words that kindle glory from the
stone."*

*"I value science—none can prize it more;
It gives me ten thousand motives to
adore."*

JUDSON B. SHAW, A.B.
MADISON, GA.

Chi Phi Fraternity; Phi Gamma Literary Society; Beta Omicron Phi Social Club; Chi Sigma Chi Social Club; Freshman Commencement Speaker; Sophomore Commencement Speaker; Fall Term Debate, '15; Spring Term Debate, '16; Relay Team, '14-'15; Baseball Team, '15; Basket-ball Team, '14-'15-'16-'17; All-Emory Basket-ball, '15; Captain Basket-ball Team, '15; Football Team, '13-'14-'15-'16; Captain Football Team, '14; All-Emory Football Team, '15; Junior Commencement Speaker; Pan-Hellenic Council; Champion Debate, '17.

"Jud" possesses a string of qualities that cannot be catalogued in a small space. One of his favorite diversions is twanging the strings of a mandolin in such a way as to bring forth innumerable dreamy (while not sportive) melodies that either captivate or irritate a section. This is only occasionally, so we won't hold it against him. His superb physique enables him to be classed as one of Emory's very best athletes "without fear of successful contradiction." The class-room is a favorite background for Jud's conquests. His work is always above par, and he seems to have to exert no unusual effort in maintaining his high standard of scholarship. Many are his friends—sex no determinant.

R. BIGHAM SMITH, B.S.
MACON, GA.

Kappa Alpha Fraternity; Phi Gamma Literary Society; Y. M. C. A.; Chief Stockholder in Stock Exchange.

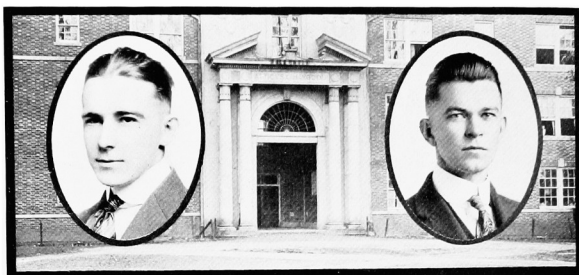
Bigham came to us too late to give us the full benefit of his "sharkism" and genius. He feels the call of the teaching profession, and we will venture he will do his best to get a job on the faculty of some "female" institution of learning. If we look at him from the angle of a scholar we find that the faculty ever qualis before the effectiveness of his "mulligal" fire. We feel that Emory lost a great deal in not having Bigham with her the first three years of his college life, yet we cannot fail to rejoice in the fact that he goes into the world representing to mankind in theory and in practice an "Emory man."





Emory Campus

1917



*"In small proportion we just beauties see;
And in short measures life may perfect
be."*

*"Endurance is the crowning quality,
And patience all the passion of great
hearts."*

THOMAS COOK SMITH, B.S. DUBLIN, GA.

Phi Delta Theta Fraternity; Secretary Pan-Hellenic Council; Phi Gamma Literary Society; President Phi Gamma; "Ovi's" Social Club; Susie Dahm Social Club; Beta Omicron Phi Social Club; Impromptu Debate, '16; Mid-Term Debate, '15; Emory Orchestra, '13; Junior Commencement Speaker; Football Team, '14-'15; Honor Roll, '15-'16; Y. M. C. A.; Central Board, '16-'17; Secretary Student Body, '16-'17.

Cook is one of the best known characters on the campus. With an affability never failing, and with a keen sense and knowledge of the "other fellow's" feelings he carries sunshine and joviality in his wake. A "shoot-around" of no mean ability he has made a reputation as a scholar; and with a well-sharpened wit he is established as Emory's greatest humorist. His presence has been greatly felt at Phi Gamma, where he has bent his every effort to the betterment of the society. A scholar, an appreciator of humor, a gentleman, Cook goes into the world to have an effect on it for the better. If we had more like him the rotation of the old globe would be smoother.

R. GLENN SUMNER, Ph.B. ST. PETERSBURG, FLA.

Phi Gamma Literary Society; Y. M. C. A.; Member Education and Journalism Club, '15-'16; Relay Team, '15; Football Team, '16; All-Emory Football Team, '16; President Phi Gamma Literary Society.

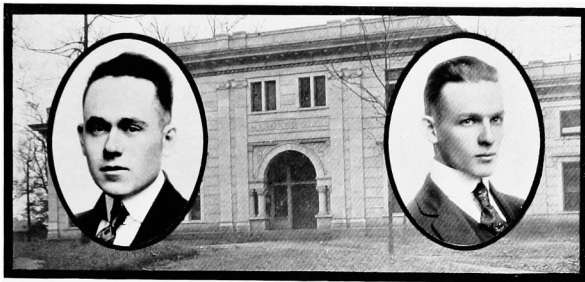
Glenn possesses that rare, though enviable quality of making friends and keeping them. Modest, unassuming, and pleasant, he has gone through Emory without the show and pomp of some men, but he has ever been on the side of the right and has stuck to his guns like a man. Never having played football before, he made an E last fall with hardly an effort. The spirit of determination that characterized his football playing has appeared again and again in his college career, and we believe it will continue to be a characteristic of his after he has cast off the cap and gown and begun to cope with the realities of life.





Emory Campus

1917



"Look! He is winding up the watch of his wit;
By and by it will strike."

A cheer's among ye taking notes,
And, faith, he'll print it."

ALFRED C. TURNER, JR., B.S. ATLANTA, GA.

Sigma Nu Fraternity; Phi Gamma Literary Society; Atlanta Club; Baseball Team, '14-'15.

When Lord Chesterfield was blucked from our nether sphere there was a great wailing and gnashing of teeth among those who centered their efforts along the lines of social endeavor. They thought there would never be another, but he has been reproduced in the cog, chic, entrancing, "A. C." "A. C." is the personification of the term "good fellow." Ever pleasant, he goes about his daily walks creating an atmosphere of good cheer and optimism.

JAMES PAUL WARWICK, Ph.B. ALBANY, GA.

Phi Delta Theta Fraternity; Phi Gamma Literary Society; Editor-in-Chief CAMPUS, '17; Editor-in-Chief Weekly, '17; Track Team, '16; Basketball Team, '16-'17; Baseball Team, '16-'17; Football Team, '17; Bachelors' Club; Y. M. C. A.; Senior Banquet Speaker.

Paul came to us from Mercer after having gleaned from the dust-covered volumes of that aged institution the most of wisdom that they contained. Since he has been among "these present" he has with Hellenic efforts forged readily to the front along every line of collegiate endeavor. He was a prominent figure at the relay race, appearing in a costume that was hailed with delight by his fellow students. From the loving breast of Emory Paul goes forth to invade the realm of journalism, and we congratulate in advance the paper that is so fortunate as to procure his services. We send him forth with the best of good wishes for the future, believing that he will put into his future work the enthusiasm, application and genius that he has incorporated into his college activity.





Emory Campus

1917



" 'Tis not in mortals to command success;
But we'll do more, Scipionius—we'll de-
serve it."

"Silence is more golden than words."

HOWARD VINCENT WEEMS, A.B. ROME, GA.

Chi Phi Fraternity; D. V. S.; Athletic Editor Emory Weekly, '15-'16; Assistant Business Manager Emory Phoenix, '16; Secretary Phi Gamma, '15; Censor Morum, Phi Gamma, '16; Mid-Term Debate, '15; Freshman-Sophomore Debate, '15; Intercollegiate Debate Council; Phi Gamma Anniversarian; Historian Phi Gamma; Junior Commencement Speaker; Poe's Birthday Essayist; Sophomore Class Historian; Honor Roll, '14-'15-'16-'17; Relay Team, '14-'15; Baseball Team, '14-'15; Basketball Team, '14-'15-'16-'17; Captain Basketball Team, '14; Football Team, '15; Assistant Manager Track Team; Manager Track Team, '16-'17; All-Emory Basketball Team, '14-'15-'16; All-Emory Football Team, '15-'16-'17; Exchange Editor Emory Phoenix, '16-'17; Junior Commencement Speaker; Business Manager Annual, '16-'17; President Phi Gamma; Pan-Hellenic Council; Y. M. C. A. Cabinet; Boynton Essay Medal; Senior Commencement Speaker; President Pan-Hellenic Council; Alpha Epsilon Upsilon Honorary Society.

Being B.M. of this publication does not mean that Howard is responsible for the words—kind or otherwise—recorded below; as has entered into the work of the college with a degree of interest unsurpassed by any of his classmates. As an athlete he represents as good as we possess; as a scholar we have but to recommend you to the honor roll, and other sources wherein are recorded the deeds of the scholastic great. Whatever may be his field of endeavor we feel sure that his will be a continuation of the success he has enjoyed while in our midst.

CHARLES H. WILLIAMS, B.S. COVINGTON, GA.

Sigma Nu Fraternity; Phi Gamma Literary Society; Y. M. C. A., Track Team, '13-'14; Special Gym, '14-'15.

A man of varied and admirable talents is this diminutive wireless operator from our neighbor- ing hamlet, Covington. What Charlie doesn't know about electricity is a mystery to Thomas Alva himself, and he has perfected his wireless knowledge to a point that almost forbids the use of the word "amateur"—although Charlie is passionately fond of work. But the realm of sports and short circuits is only an isolated case of his capability. Were Charlie a hewer, and correct answers ammunition, Emory would now have a mangled and bleeding faculty, impaired beyond recognition.





Emory Campus
1917



JUNIORS





Emory Campus



History of Junior Class



AMONG the world's red-letter years stands 1911 among the more prominent. The world was "broke out," and in accord with the "breaking" spirit, the class of 1918 "broke loose" in classic Oxford town. A motley crew, perhaps, and green as grass, but a bunch of genial and harmonious fellows, as the first freshman class of the new University, ready and willing to at least try any reasonable thing once, consequently cast the die. To prove that there was "somebody home" this selfsame class declared that scrapping "ain't in our line." The first freshmen ever to have such well-established nerve. Then surprising even themselves impetuously, walk away with the first football victory for a freshman class in a decade. Suffice to say that the class has not fallen down on the job, football or otherwise. The '18 baseball team is a marvel, particularly the infield, which out-shines anything "these parts" have witnessed for a Methuselah's life-time.

Basket-ball and track are more outlets for '18 athletic talents; particularly are we possessed of the fleet-footed.

But athletics strike only a minor key in '18's activities. The literary societies have been fields for noteworthy achievements. Debaters and orators are the right-fol cognomen applied to many of the class.

Besides the followers of the art of the spoken word, we have many talented in the art of the written word. The class of '18 has given more than its share of literary lights to Emory's literary coterie past and present.

Scholarship has been one of the principal steps in '18's success. Like every class we have a few "boners," but general scholarship is the result of class sentiment. A good general scholarship record plus a good general activities record is considered by many on par or above par with the old rut.

The class of 1918 has two virtues, which are simply the "bull-dogish-hang-on-tightness" spirit, and the "pull together spirit," coupled with a general love and all-time consideration for the old college, and one another, is within itself the basis of '18's achievements, not only yesterday, today, but tomorrow in the path of senior-dom, and further in the paths of life-dom.

The 1918 spirit is the red-blooded, warm-hearted "do-it" spirit of the broad American, and legacies from that of the fabious Lilliputian.

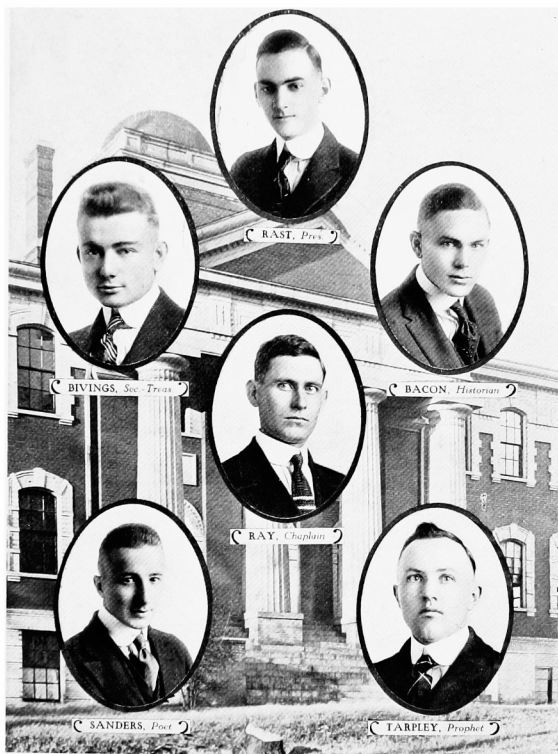
CHAS. T. BACON, JR., Historian.





Emory Campus

1917





Emory Campus

1917



WINSTON STILES ALLEN, Ph.B.

LA GRANGE, GA.

Entered College Fall, 1915

Kappa Alpha Fraternity; Few Literary Society; "Owl's" Social Club; Chi Sigma Chi Social Club; Associate Editor Emory Weekly, '16-'17; Intercollegiate Debate Council, '16-'17; Mid-Term Debate, '17; Corresponding Secretary Few, '16-'17; Member Board Directors Few, '16; Y. M. C. A.; Basketball Team, '15-'16; Baseball Team, '16-'17; Assistant Manager Track Team, '16-'17; Critic Few; Manager Junior Relay Team; Bachelor's Club; Champion Debate, '17.



J. HERMAN ALLISON, A.B.

CLEVELAND, GA.

Entered College Fall, 1916

Few Literary Society; Ministerial Association; Young Harris Club; Ministerial Association; Intercollegiate Prohibition Association; Y. M. C. A.

CHARLES T. BACON, JR.

MAVSVILLE, GA.

Entered College Fall, 1914

Delta Tau Delta Fraternity; Few Literary Society; Y. M. C. A.; Dux of Class, '14-'15; Freshman Banquet Speaker, '14; Sophomore Banquet Speaker; Baseball Team, '15-'16-'17; Basketball Team, '14-'15-'16; Manager Basketball Team, '15-'16; Relay Team, '14-'15; Historian Class, '16-'17.





Emory Campus

1917



EDGAR PARK BELLUPT, A.B.

ST. ALBANS, WEST VIRGINIA

Entered College Fall, 1916

Non-Fraternity; Few Literary Society; Y. M. C. A.;
Relay Team, '17; Treasurer I. P. A., '16-'17; Minis-
terial Association.

F. LEE BIVINGS, Ph.B.

JAKIN, GA.

Entered College Fall, 1914

Kappa Alpha Fraternity; Phi Gamma Literary So-
ciety; Beta Omicron Phi Social Club; Relay Team, '14-
'15; Track Team, '15; Baseball Team, '16; Football
Team, '16; Secretary and Treasurer Class, '16-'17;
Publication Committee, '16-'17; Secretary Chi Gamma,
'17; Y. M. C. A.; Historian Phi Gamma.

FAY CANDLER BOLAND, B.S.

OXFORD, GA.

Entered College Fall, 1914

Few Literary Society; Y. M. C. A.; I. P. A.; Board
of Directors Few, '17; Track Team, '14-'15-'16-'17;
All-Emory Track Team, '14-'15; Basket-ball Team, '14-
'15-'16-'17; Manager Basket-ball Team, '17; Relay
Team, '14-'15-'16-'17; Captain Relay Team, '15-'16-
'17; Special Gym, '14-'15-'16-'17; Assistant Business
Manager Emory Weekly, '16-'17.





Emory Campus

1917



W. E. BOSTWICK, Ph.B.

ABINGTON, GA.

Entered College Spring, 1915

Sigma Alpha Epsilon Fraternity; Phi Gamma Literary Society; Freshman Commencement Speaker; Sophomore Commencement Speaker; Baseball Team, '15.

ROBERT M. BURR, B.S.

DECATUR, ALA.

Entered College Fall, 1915

Phi Delta Theta Fraternity; Phi Gamma Literary Society; Y. M. C. A.; Football Team, '15; Baseball Team, '16; Emory Orchestra, '16-'17; Junior Quartet, '17; Pan-Hellenic Council, '16-'17; Bachelors' Club; Mandolin Club; Director of Orchestra.

WILLIAM STEWART BUSH, B.S.

GRAY, GA.

Entered College Fall, 1915

Alpha Tau Omega Fraternity; Phi Gamma Literary Society; Football Team, '15; Glee Club; Y. M. C. A.





Emory Campus

1917

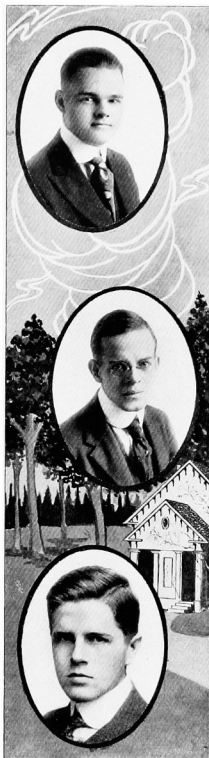


G. MYRICK CLEMENTS, B.S.

EASTMAN, GA.

Entered College Fall, 1915

Delta Tau Delta Fraternity; Phi Gamma Literary Society; Y. M. C. A.; Relay Team, '15; Football Team, '16; Pan-Hellenic Council, '16-'17; Bachelors' Club.



GEORGE WILLARD COBB, JR., A.B.

MEMPHIS, TENN.

Entered College Fall, 1914

Delta Tau Delta Fraternity; Few Literary Society; Y. M. C. A.; Poet Class, '14-'15; Honor Roll, '14-'15; Treasurer Ministerial Association; Secretary and Treasurer Tennessee Club; Commencement Speaker, '16; Sophomore Declamation Medal; Die Astronomische Gesellschaft.

B. M. CRITTENDEN, A.B.

SHELLMAN, GA.

Entered College Fall, 1914

Phi Delta Theta Fraternity; Phi Gamma Literary Society; Football Team, '14-'16; Bachelors' Club.





Emory Campus

1917



EASON CROSS, A.B.
SPRINGFIELD, GA.

Entered College Fall, 1914



Alpha Tau Omega Fraternity; Sigma Upsilon Literary Fraternity; Phi Gamma Literary Society; Y. M. C. A., Freshman-Sophomore Debate, '15; Freshman Commencement Speaker; Fall Term Debate; Sophomore Freshman Debate, '16; Toastmaster Sophomore Banquet; Y. M. C. A. Cabinet, '16-'17; Winner Phoenix Essay Medal, '16; Special Censor Phi Gamma, '14; Assistant Treasurer, '15; Chaplain, '16; Phi Gamma Speaker Literary Society's Anniversary, '16; Junior Respondent Senior Dismissal, '17; Impromptu Debate, '16; Relay Team, '15; Vice-President Student Body, '16-'17; Acting Secretary Student Body, '17; Central Board, '16-'17.

A. C. DARLING, B.S.
ANDALUSIA, ALA.

Entered College Fall, 1914



Sigma Nu Fraternity; Beta Omicron Phi Social Club; Chi Sigma Chi Social Club; "Owl's" Social Club; Football Team, '14-'15-'16; Manager Baseball Team, '15; Class Prophet, '15-'16; Assistant Business Manager Phoenix, '16-'17; Athletic Committee, '16-'17; Bachelors' Club.

E. A. DAVIDSON, Ph.B.
COLUMBUS, GA.

Entered College Fall, 1916

Pi Kappa Phi Fraternity.





Emory Campus

1917



H. REID DEJARNETTE, JR., Ph.B.

EATONTON, GA.

Entered College Fall, 1915

Phi Delta Theta Fraternity; Phi Gamma Literary Society; Mid-Term Debate, '16; Spring-Term Debate, '16; Freshman Commencement Speaker, '16; Freshman Declaration Medal, '16; Associate Editor Emory Weekly, '16-'17; Secretary Phi Gamma; Intercollegiate Debate Council; "Owl's" Social Club; Alternate Intercollegiate Debate, '17; Bachelors' Club; Champion Debate, '17.

WILLIAM J. DICKEY, Ph.B.

BEAUCHTES, GA.

Entered College Fall, 1915

Few Literary Society; Y. M. C. A.; Leader Volunteer Band, '16-'17; Board of Directors Few; Greater Emory Committee, '16-'17; Track Team, '15-'16; Member Sports Club; Mid-Term Debate, '16-'17.

I. A. GIBSON, JR., B.S.

SAVANNAH, GA.

Entered College Fall, 1914

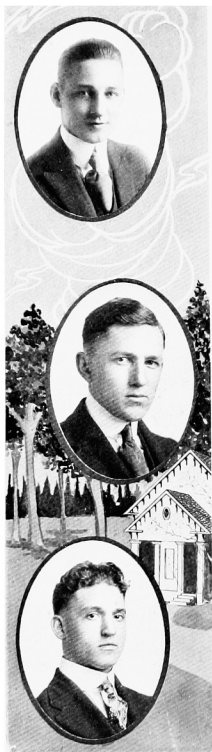
Sigma Alpha Epsilon Fraternity; Phi Gamma Literary Society; Football Team, '14; All-Emory Football Team, '14; Beta Omicron Phi Social Club; Orchestra and Mandolin Club; Athletic Editor Weekly, '16-'17; Honor Roll, '15-'16.





Emory Campus

1917



WILBUR H. HAMILTON, Ph.B.

PADEMAH, Ky.

Entered College Fall, 1915

Phi Delta Theta Fraternity; Phi Gamma Literary Society; Y. M. C. A.; Sophomore Commencement Speaker; Baseball Team, '16-'17; Football Team, '15-'16; Basketball Team, '17; Relay Team, '17; Bachelors' Club.

C. P. HARRIS, A.B.

ELBERTON, Ga.

Entered College Fall, 1915

Alpha Tau Omega Fraternity; Few Literary Society; Fall Term Debate, '16; Reinhardt Club; Ministerial Association; Delegate to G. S. M. C., '15; Y. M. C. A.; Chairman Mission Study Work, '16; Baseball Team, '16-'17; All Emory Baseball Team, '16; Chaplain Few.

ANTHONY BEARN, Ph.B.

BYRONVILLE, Ga.

Entered College Fall, 1913

Re-entered Fall, 1916

Pi Kappa Phi Fraternity; Y. M. C. A.; Ministerial Association; Few Literary Society; Sparks Club; Leader Bible and Mission Study Group; President of Normal Group Bible and Mission Study Leaders; Special Censor Few; Chaplain Few; Spring Term Debate, '17; Assistant Business Manager Emory Weekly, '14-'15; Basketball Team, '14; Class Track Team, '14; Basketball Team, '17.





Emory Campus

1917



ROY THOMAS HOUTS
ERWIN, TENN.

Entered College Fall, 1916

Non-Fraternity; Few Literary Society; Y. M. C. A.,
Basket-ball Team, '17; Relay Team, '17; Vice-President
I. P. A., '16-'17; Ministerial Association.



RALPH HUCKABEE, JR.
ASHEURN, GA.

Entered College Fall, 1914

Few Literary Society; Freshman-Sophomore Debate;
Football Team, '14-'16; Relay Team, '15.



MARK HULSEY, Ph.B.
GAINESVILLE, GA.

Entered College Fall, 1916

Few Literary Society; Y. M. C. A.; Reinhardt Club;
Relay Team, '17; Champion Debate, '17.





Emory Campus 1917



LOUIS P. HUSBAND, Ph.B.

MOULTAIE, GA.

Entered College Fall, 1914

Kappa Alpha Fraternity; Phi Gamma Literary Society; Y. M. C. A.; Class Poet, '14-'15; Football Team, '14-'16; Relay Team, '15; Baseball Team, '15; Assistant to Business Department EMORY CAMPUS, '15-'16-'17; Assistant to Business Department Emory Weekly, '16-'17.



JOHN J. INGRAM, Ph.B.

OPELIKA, ALA.

Entered College Fall, 1914

Alpha Tau Omega Fraternity; Phi Gamma Literary Society; "Owl's" Social Club; Chi Sigma Chi Social Club; Beta Omicron Phi Social Club; Secretary-Treasurer Class, '15-'16; Baseball Team, '15-'16-'17; Captain Baseball Team, '15; All-Emory Baseball Team, '16; Football Team, '16.

W. T. IRVINE, JR., A.B.

AUGUSTA, GA.

Entered College Fall, 1914

Alpha Tau Omega Fraternity; Phi Gamma Literary Society; Y. M. C. A.





Emory Campus



B. C. KERR, Ph.B.

MONTPELIER, GA.

Entered College Fall, 1914

Delta Tau Delta Fraternity; Phi Gamma Literary Society; Y. M. C. A.; Censor Mornum Phi Gamma; Spring Term Debate, '16; Fall-Term Debate, '16; Football Team, '14-'15-'16; Basket-ball Team, '15-'16-'17; Baseball Team, '15-'16-'17; Track Team, '15; All-Emory Baseball Team, '16; Manager Baseball Team, '16; Relay Team, '17; Sparks Club.

JAMES GEORGE LESTER, JR., B.S.

CONVENTON, GA.

Entered College Fall, 1914

Chi Phi Fraternity; Phi Gamma Literary Society; Y. M. C. A.; Honor Roll, '15-'16; State News and Alumni Editor of the Weekly; Bachelors Club; Football Team, '15-'16; Basket-ball Team, '15-'16-'17; Baseball Team, '15-'16-'17; All-Emory Football Team, '16; Captain Basket-ball Team, '17; Captain Football Team, '17; Manager Baseball Team, '17; Relay Team; Alpha Epsilon Upsilon.

JOHN W. LOGAN, A.B.

CARTERSVILLE, GA.

Entered College Fall, 1913

Delta Tau Delta Fraternity; Few Literary Society; Honor Roll, '13-'14-'15-'16; Sub-Freshman Scholarship, '14; Latin Medal, '15; Freshman Commencement Speaker, '15; Fall-Term Debate, '16; Vice-President Few; Y. M. C. A.; Junior Commencement Speaker; Judicial Committee, '16-'17; Spring Term Debate, '17; Orchestra; Critic Few; Alpha Epsilon Upsilon.





Emory Campus

1917



MILES MALONE, B.S.

CUTHBERT, GA.

Entered College Fall, 1914

Sigma Nu Fraternity; Phi Gamma Literary Society;
Beta Omicron; Phi Social Club; Chi Sigma Social Club;
Football Team, '14-'15-'16.

HERMAN WILKES MARTIN, A.B.

FITZGERALD, GA.

Entered College Fall, 1913

Re-entered Fall, 1916

Delta Tau Delta Fraternity; Sigma Upsilon Literary
Fraternity; Few Literary Society; Y. M. C. A. Group
Study Leader; Associate Editor Emory Weekly, '14-'15;
Tennis Club; Junior-Senior Oration Medal, Few So-
ciety, '16; Honor Roll, '12-'13-'14-'16-'17; Special
Gym., '13-'14; Alpha Epsilon Upsilon.

WALTER M. PEARSON, Ph.B.

WOODLAND, GA.

Entered College Fall, 1914

Non-Fraternity; Few Literary Society; Y. M. C. A.,
Ministerial Association; Censor Morum, Few, '16; Chap-
lain Few, '17; Relay Team, '15-'17; Sparks Club





Emory Campus

1917



J. ELLIS POPE, Ph.B.
GLENWOOD, GA.

Entered College Fall, 1915

Non-Fraternity; Few Literary Society; Member S. G. C. Club; Y. M. C. A.; Special Censor Few, '15; Spring Term Debate, '16; Fall-Term Debate, '16; Vice President Few, '16; Recording Secretary Few, '17.

J. B. RAGSDALE, A.B.
LITHONIA, GA.

Entered College Fall, 1915

Non-Fraternity; Y. M. C. A.; Few Literary Society; Assistant Treasurer Few Literary Society; Chairman Program Committee I. P. A.; Freshman-Sophomore Debate, '16; Sophomore Commencement Speaker, '16; Impromptu Debate, '16; Reinhardt Club.

JOHN MARVIN RAST, A.B.
LOUISVILLE, GA.

Entered College Fall, 1914

Non-Fraternity; Few Literary Society; Y. M. C. A.; Commencement Speaker, '15; Fall-Term Debate, '15; Welcome Address Few, '16; Secretary I. P. A., '15-'16; Class Poet, '15-'16; Delegate Georgia Students' Conference, '15; President I. P. A., '16-'17; Critic and Vice President Few, '17; Board Directors Few, '17; Special Gymn., '16; Relay Team, '14-'15; President Class, '16-'17; Impromptu Debate, '16.





Emory Campus

1917



CLARENCE B. RAY, B.S.

LUMBER CITY, GA.

Entered College Fall, 1914

Non-Fraternity, Member Ministerial Association; President S. G. C. Club; Y. M. C. A.; Few Literary Society; I. P. A., Chaplain Class, '16-'17.



EUGENE HENDRIX SANDERS, A.B.

GORDON, GA.

Entered College Fall, 1914

I. P. Kappa Phi Fraternity; Few Literary Society; Y. M. C. A.; S. G. C. Club; Greater Emory Committee, '15-'16; I. P. A.; Special Censor Few; Delegate to Y. M. C. A. and M. L. C. Conference Cox College, '15; Chaplain Few, '15; Literary Editor Phoenix, '16-'17; Critic Few, '16; Promotion Committee Y. M. C. A., '16-'17; Vice-President Few, '16; Poet Class, '16-'17; Ministerial Association; Secretary S. G. C. Club, '16-'17; Secretary I. P. A., '16-'17; Pan-Hellenic Council, '16-'17; Critic Few, '17; Contributor to the Weekly; Contributor to Phoenix; Contributor to Schmittkind's Anthology of American University Poetry, '16.

W. ROBERT REUD, Special

HICKORY, N. C.

Entered College Fall, 1916

I. P. Kappa Phi Fraternity; Pan-Hellenic Council; Sigma Upsilon Literary Fraternity Prize Winner.





Emory Campus

1917



WALTER GLENN SHIELDS, A.B.

COVINGTON, GA.

Entered College Fall, 1913

Non-Fraternity; Honor Roll, '13-'14; Member Emory University Radio Association, '16-'17; Author of "Cleontine," "Pedro Valdes," and the "Martians."

WALTER C. STEPHENSON, A.B.

COVINGTON, GA.

Entered College Fall, 1913

Phi Delta Theta Fraternity; Few Literary Society; Publication Committee; Honor Roll, '14-'15-'16; Sophomore Commencement Speaker; Freshman-Sophomore Debate, '15; Mid-Term Debate, '16; Impromptu Debate, '16; Washington Birthday Orator, '17; Class Prophet, '14-'15; Orchestra; Special Censor Few.

Z. C. TARTLEY, A.B.

FAIRBURN, GA.

Entered College Fall, 1914

Non-Fraternity; Few Literary Society; Y. M. C. A., I. P. A.; Freshman-Sophomore Debate, '16; Spring-Term Debate, '17; Recording Secretary Few, '16; Vice President Few, '17; Relay Team, '14-'15-'16; Football Team, '16; Judicial Committee, '16-'17; Class Prophet, '16-'17.





Emory Campus



WILLIAM ELDRIDGE SMITH, B.S.

DOMIN, GA.

Entered College Fall, 1913

Re-entered Fall, 1915

Phi Delta Theta Fraternity; Phi Gamma Literary Society; Y. M. C. A.; Pan-Hellenic Council, '16-'17; Fall Term Debate, '16; Special Censor Phi Gamma; Historian Class, '16-'17; Assistant Business Manager Annual, '16-'17; Beta Omicron Phi Social Club; Bachelors' Club; Captain Baseball Team, '14; Football Team, '13-'14-'15-'16; Captain Football Team, '16; Manager Football Team, '14; Basketball Team, '14-'16-'17; Relay Team, '13-'16-'17.



S. L. WHITE, Ph.B.

DOMIN, GA.

Entered College Fall, 1916

Sigma Nu Fraternity; Phi Gamma Literary Society; Y. M. C. A.; Relay Team, '17.

CLAY F. WYNN, A.B.

JACKSON, TENN.

Entered College Fall, 1915

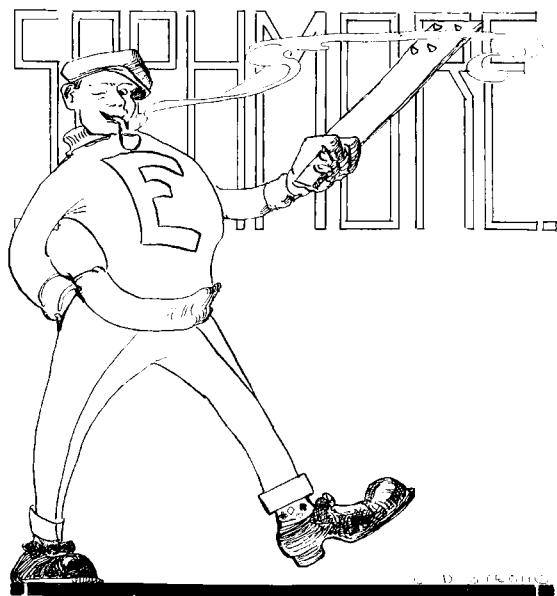
Alpha Tau Omega Fraternity; Phi Gamma Literary Society; Y. M. C. A.; Honor Roll, '15-'16-'17.





Emory Campus

1917





Emory Campus

1917



History of Sophomore Class



W e tremble at the thought of ever being anything else but sophomores or "wise fools," as the term implies. Although we have had one transformation without any deadly results, yet somehow we feel a shaky spirit in our bones lest another should prove not so successful. O, the name we are justly proud. But what's in a name? Our athletic record is by no means a bad one. When it comes to producing All-Emory men, we have delivered the goods. For the past two years the "E" has been very peculiarly associated with '19. To enumerate all our victories would become monotonous, yea, before the half had even been told. Suffice it to say, therefore, that our envious record has not yet reached its climax. But we are still in the ring, confident of awaiting victories.

When it comes to scholarship, if you doubt us being in the lead, we refer you to the secretary of the faculty, whose record bears us witness that we stand at the top. We congratulate the class of '16 on the fact that they come nearest us on honor roll men in freshman year. No other class in several years has approached us in the number of honor roll men. But not unlike other classes of its size we have a few "flunk-outs"; but the minute proportion is to be appreciated.

Although we have a goodly number, yet the class has not been able to retain all of its constituents. Some have fallen out to take charge of their fathers' business; others because their fathers had new Fords and no chauffeur; still others plunged into the fetters of matrimony, or even venturing to combine matrimony with the insurance business. But "the loss of one is the gain of another," hence they have our very best wishes.

To the upper-classmen, we look on you with not a little admiration. Your super abundant dignity is to be desired more than gold, "yea, than much fine gold." Your achievements are to us like the Rockies. But when 1919 shall have adorned the calendar this class will pride itself in being a factor in having accomplished the seeing impossible at old Emory. But let it be hoped that silver-knobbed canes and John B.'s stiff covers will not be the broadest plank in our platform.

Since the historian is already vibrating with the class spirit, he will refrain from saying more. But believing the reader to be convinced of the superiority of the class, he closes these remarks leaving the rest to fate.

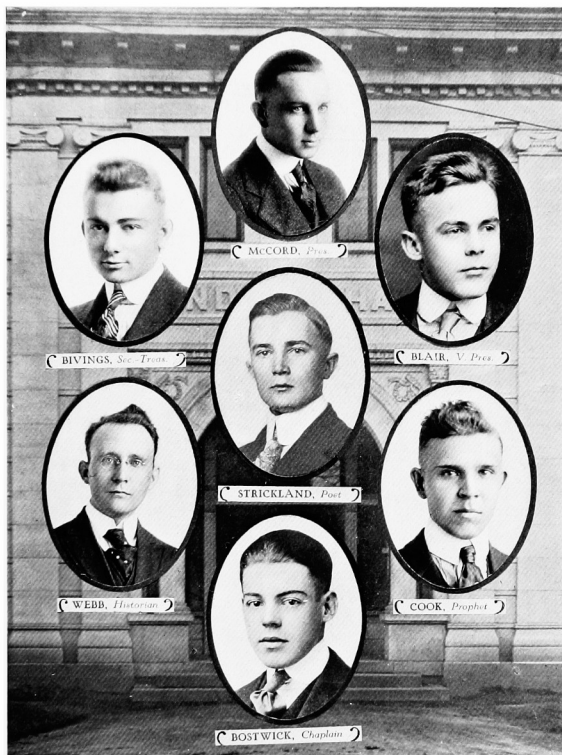
M. P. WERN, Historian.





Emory Campus

1917





Emory Campus

1917



Sophomores

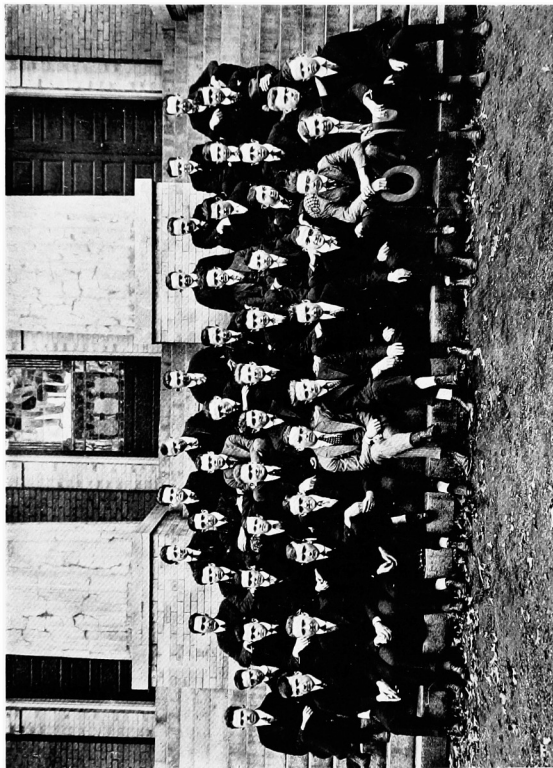
J. E. ADAMS	Montezuma	T. A. McVORD	Atlanta
W. S. ASKEW	Newnan	S. M. MATTHEWS	Fort Valley
E. B. BAKER	Atlanta	K. F. MELTON	Oxford
C. K. BAYINGS	Jakin	D. METTS	Dublin
D. L. BALLARD	Brunswick	F. R. MONTFORD	Greensboro
W. P. BARBER	Wellington, Tenn.	B. K. F. MULLINS	Greensboro
W. Q. BLAIR	Marietta	H. L. PEARSON	Donaldsonville
C. G. BOLAND	Oxford	J. M. PEARCE	Gainesville
C. C. BOSTWICK	Arlington	L. L. PASSMORE	Sylvester
D. C. BUTLER	Covington	G. A. PENNINGTON	Forsyth
H. COOK	Madras	L. V. POWELL	Red Level, Ala.
F. COOK	Madras	L. N. POPKIN	Mulberry, Fla.
J. R. CHAPPELL	Douglas	W. B. SANDERS	Coleman
P. E. CHAPPELL	Nashville, Tenn.	J. W. SHEAROUSE	Brooklet
A. B. DANIEL	Girard	R. J. SELLANO	Rinehurst
H. M. EDGE	Blairsville	F. SPEARS	Atlanta
J. W. FELTON	Montezuma	O. H. STEVENS	Ellaville, Ala.
W. H. FLOWERS, JR.	Jakin	D. A. STRICKLAND	Tallapoosa
C. H. GARDEAU, JR.	Atlanta	W. A. STROZIER	Carnesville
J. L. GRAHAM	Fort Gaines	W. B. STUBBS	Savannah
T. G. GREEN	Katonton	J. F. TERRY	Shellman
P. N. HARLEY	Waycross	W. S. THOMASON	Temple
R. C. HOSALE	Nashville, Tenn.	KARL THOMPSON	Shellman
R. S. HUMPHREY	Swainsboro	G. USSERY	Dexter
W. T. IRVING, JR.	Augusta	J. L. WEDDINGTON	Dublin
J. S. JONES	Dawson	M. P. WEBB	Oxford
W. S. LITTLEJOHN	Americus	W. J. WILKIN	Cokipitt
		R. B. WILSON	Oxford





Emory Campus

1917





Emory Campus

1917



Break, Break, Break

(With apologies to Tennyson)

BY W. ERNEST ROGERS.

Break, break, break,
My purse, poor bankrupt, break;
Though I held them off 'till 3 G. M.,
They craved a higher stake.

'Tis well for the studious chap
To make up his diurnal bull,
But he never had that thrill of thrills—
To hold an "ace-high" full.

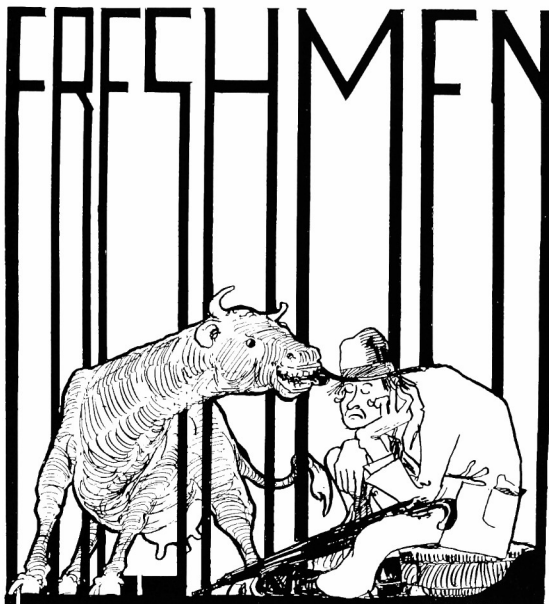
'Tis well to "saw" and "knit,"
Perhaps to "whip" and "fat";
But all the joy I crave is in
This phrase: "I'm stayin' pat."

Break, break, break,
As sure as A don't win,
But yet 'tis joy unto my soul
To say, "I'll raise you ten!"





Emory Campus
1917





History of Freshman Class



AS Father Time has so destined, we are the class of 1920. We have made and are making, a record-breaking history. The freshman classes that follow will have to go some to keep the pace this class of '20 has set. Now that our dreams of younger days have come true, and we are college men, let us look forward with broader views to the things that make life. Let us keep doing our best, so when fate deals out our portion, we will be in a position to do better.

When it comes to "Shoot-'em-ups," our class is heavily laden with them. And on the gridiron, well, we just can't be overlooked.

We didn't do quite so well in football as we expected, but all of our men were new at the game. Nevertheless we kept our opponents in doubt until the referee said: "Time's up." One of our men made All-Emory, which isn't bad for new men.

In basketball our team was as a light set on a hill. We took the pennant without the loss of a single game, and on top of that three of our deserving men made All-Emory team. They shot the old ball with the eye of William Tell.

After showing up so in basketball our confidence was revived. We just had to win the relay race, and we did win. Our boys went around the track as if they had been participating in Olympian games all of their lives.

With our confidence still more revived by the victory in the relay race, and with plenty of good material, we have no reason to doubt our ability to cop the baseball pennant. Anyway we are going to show the upper classmen a fast time if they get it.

And last but by no means least, I must mention that genuine class spirit. We have just "gambled" of it.

And now, fellow classmen, as the close of our freshman year draws near, let us not forget that unity with which we have worked, and let us carry that same unity on through college with us, and when at last our dreams about the "Sheep-Skin" come true, may old Emory say, "Well done."

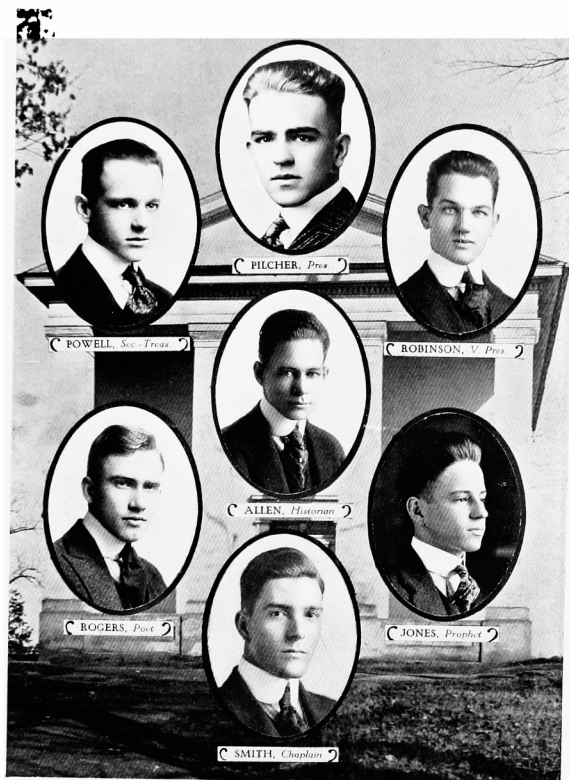
H. HOMER ALLEN, Historian.





Emory Campus

1917





Emory Campus

1917



Roll of Freshman Class

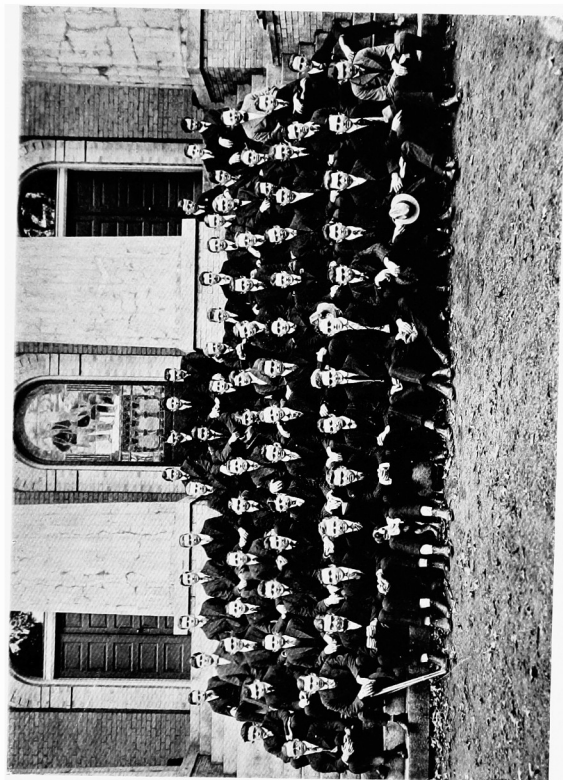
H. H. ALLEN	Columbus	C. R. McKENIE	Columbus
W. B. BAILEY	Covington, Tenn.	A. K. McLELLAN	Pollard, Ala.
R. C. BAKER	Temple	D. D. MADON	Huntington, Tenn.
R. H. BALDWIN	Atlanta	J. E. MANGUM	Atlanta
W. F. BELL	Bartow, Fla.	E. MARTINEZ	San Juan, P. R.
A. M. BROOKS, JR.	Logansville	T. T. MAYO	Social Circle
D. F. BRUNTON	Sparks	E. W. McMANUS	Bear Creek, N. C.
R. A. BUSH	Camilla	R. A. MINTER	Griffin
T. E. BYRD	Braxton	A. F. MOSLEY	Oxford
J. C. CATHEN	Milner	R. D. NORTON	Brownwood
E. D. CHAPPELL	Nashville, Tenn.	L. H. O'QUINN	Odum
L. COOK	Toccoa	J. K. PAPPARD	Camden, Tenn.
S. S. COVINGTON	Moultrie	B. PEMBERTON	Tampa, Fla.
J. G. DELL	Leslie	E. C. PHARR	Sycamore
D. W. DICKEY	Beachton	W. T. PILCHER	Warrenton
G. A. DUNCAN	Trion	D. H. POER	Jenup
J. A. DUNAWAY	Harlem	H. D. POPE	New Albany, Miss.
H. ELDER	Farmington	J. H. POWELL	Quitman
J. L. ESTES	Gay	A. PROCTOR	Clarksville, Tenn.
J. D. FINLEY	Bruton, Ala.	P. E. PURKS	Union Point
R. FLOWERS	Thomasville	A. M. RICHTER	Savannah
H. W. FOWLER	Warrenton	R. R. ROBERTS	Lawrenceville
N. A. FUNDERBURK	Moultrie, N. C.	E. L. ROBINSON	Buena Vista
J. R. GRAVES	Zebulon	G. ROBINSON	Covington
F. M. GREEN	Murrayville	F. M. ROGERS	Columbus
M. L. GREENE	Port Valley	W. L. ROGERS	Atlanta
T. L. HAMMON	Macon	S. SANDERS	Fayetteville
L. M. HARRISON	Bluffton	H. L. SANDERS	Columbus
E. M. HARRIS	Russellville	J. W. SHARP	Atlanta
H. HEAD	Tallahassee	J. W. SLADE	Sandersville
H. HENLEY	Williamsport, Tenn.	L. P. SMITH	Macon
G. M. HICKS	Sylvestor	M. A. SPRAYBERRY	Homer
G. G. HICKS	Porterdale	W. SPANGL	Sale City
Y. HILL	Montezuma	B. STEINBERG	Cartersville
C. H. HOWELL	Zebulon	J. E. STEWART	Ellaville
H. T. IVEY	Moultrie, N. C.	W. TOOLE	Winder
J. D. JENKINS	Jackson, Tenn.	J. B. WADDELL	Lonoke, Ark.
H. Q. JONES	Cartersville	W. C. WARREN	Atlanta
L. T. JONES	Athens	W. P. WATKINS	Memphis, Tenn.
W. C. KEMP	Sylvania	G. L. WHITE	Elberton
M. L. KING	Pavo	S. W. WICKER	Andersonville
W. P. KOLB	Ozark, Ala.	A. B. WIGHT	Cairo
W. T. LANGSTON	Valdosta	E. A. WIGHT	Cairo
O. A. LOWE	Opelika, Ala.	R. L. WILKINS	Jesup
K. P. MUCKEY	Monticello	O. S. WILSON	Recovery
		S. W. WOODALL	Woodland





Emory Campus

1917





Emory Campus 1917



Thoughts of Farewell

BY THEODORE N. MORGAN, JR.

Just one last night of purest joy,
Just one last night of love,
And then to bid thy face good-bye,
Forever more to rove.

Ah! sad indeed is death, my dear,
But sadder still the pain,
To live, and yet to never see
Thy face and form again.

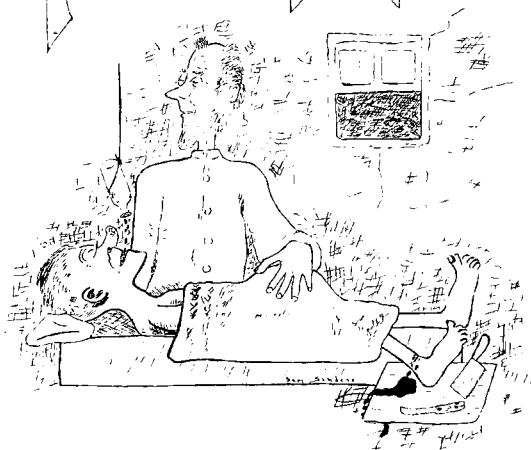




Emory Campus
1917



PRE-Med





History of Pre-Medical Class

DAY dreams and air castles sometimes become realities—when we dream the same dream hard enough, and often enough. A seed of inspiration is liable to be sown in a day dream, which, fertilized by a little germ of determination, soon becomes a concrete reality, if we do not allow dreams to become our masters. This is not a high-brow, psychic lecture on dreams, but simply a little introduction to our history.

When the pre-medical class was first established at Emory it was looked upon as a farce, as a “crip” course, as a last resort for flunk-outs. But some of our brethren who have been willing to wait and watch, and who are now better acquainted with the course are ready to agree with us that it is far from being a “crip.” Its foundation is the brains of some of the most scientific men of modern time, and is backed by the laws of the greatest commonwealth in the state. From this alone we could infer that it is nothing short of the pure in heart.

Unlike the other classes we have only one year in which to prove our worth, therefore as we are here only one-fourth as long as the other classes, it would be unkind of the reader to expect more than one-fourth of the attainments. But we do not believe that our scholarship has passed wholly unnoticed. Although there are only a score of men in the class we expect to land several honor roll men.

We feel that from a small beginning we have grown into a class to be proud of, and of which we *are* proud. But we have not reached, and hope never to reach, that state of stung contentment where we can sit and hold our hands and look only to past achievements. Rather we are like gladiators of old, and having achieved victories, gird our loins for greater conquest from which we will ever emerge victorious.

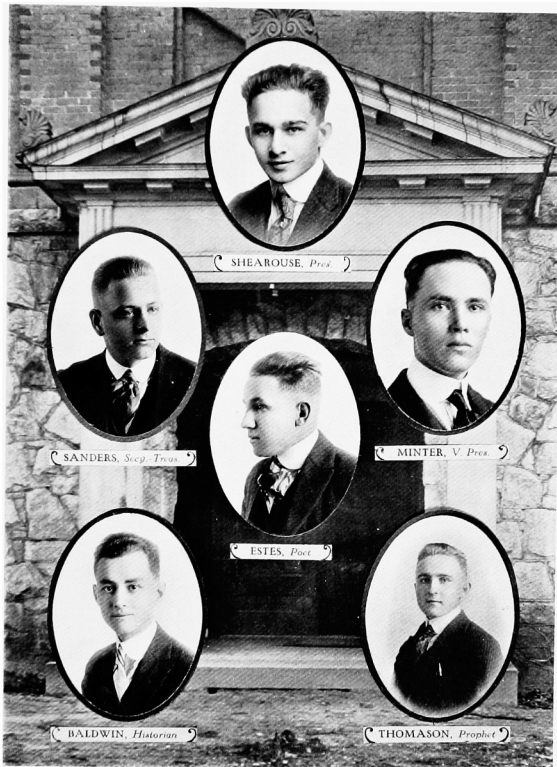
R. HENRY BALDWIN.





Emory Campus

1917





Emory Campus

1917



Roll of Pre-Medical Class

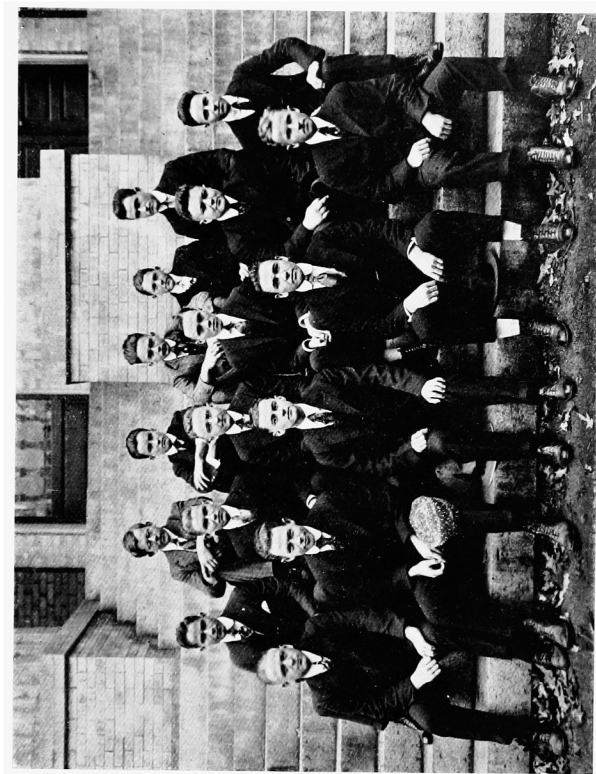
H. H. ALLEN	Columbus	H. L. PEARSON	Woodland
R. H. BALDWIN	Atlanta	R. R. ROBERTS	Lawrenceville
H. M. EDGE	Blacksville	F. M. ROGERS	Columbus
H. O. ELDER	Farmington	A. S. SANDERS	Payetteville
J. L. ESTES	Gay	J. W. SHARP	Atlanta
N. A. FUNDERBURK, JR.	Monroe, N. C.	J. W. SHEAROUSE	Brooklet
E. MARTINEZ	San Juan, P. R.	W. L. THOMASON	Temple
R. A. MONTGOMERY	Griffin		





Emory Campus

1917





Emory Campus

1917



PRE LEGAL CLASS





Emory Campus
1917



THE ACADEMY





Emory Campus
1917



History of Emory University Academy



BEE came a-luzzing in the bonnet of the bishop. Said this busy, booming bee to the bishop (and there's only one bishop, you know of consequence, in lands with drainage toward the gulf): "Why not a real preparatory school in the goodly regions compassed between the far-famed Mason's and Dixon's on the north, and watery expanses on the east, west and south?" The bishop cocked his head and the bee had scored a very palpable hit, perhaps in bee-language which we will here desert, a sting.

Thus it came about in September, 1915, that Emory University Academy opened its doors (several of them) to the aspirants for wisdom's solative—a new thing was under the sun, Solomon and his harem to the contrary. This new thing was a bona fide, first-class preparatory school set among the classic groves and muddy roads of Oxford town in the County of Newton. Formerly, yea immemorially, a thing called "sub"—the genus sub-freshman—had ranged his verdant way the older men among. It is no more. The Academy student is here, and here to stay.

Emory University Academy has a real mission, a big one, and with the good and big men behind her, there is every assurance that the scope of this mission, the field of usefulness will grow with each passing year.

Two years of its history are now recorded—two productive, pregnant years—but earnestly, we believe, of the years yet to come.

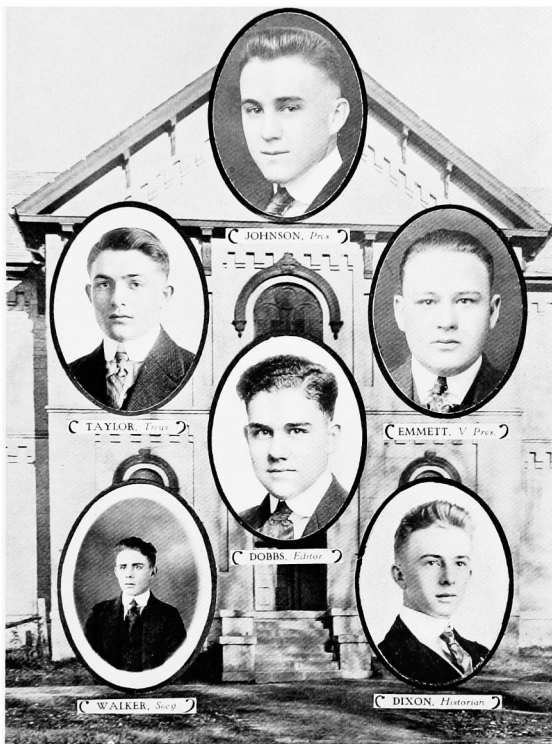
SEWELL H. DIXON, Historian.





Emory Campus

1917





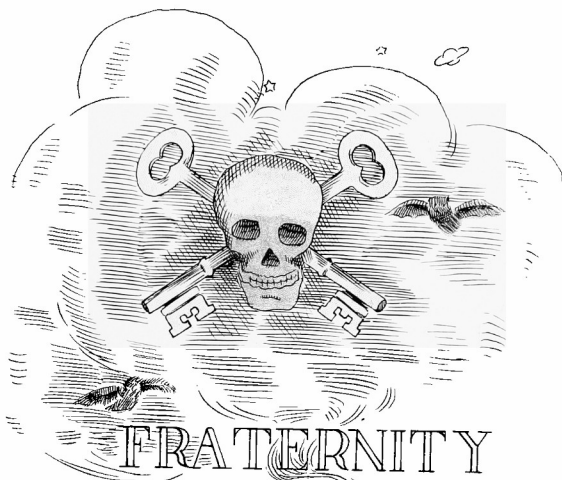
Emory Campus

1917





Emory Campus
1917





Emory Campus

1917



Have You?

Have you ever seen
A fair maiden
At the seashore,
Who was built
On God's divine plan;
With the skimpiest
Of bathing suits,
And most charming
Of smiles on;
With her hair
Down her back,
(And she was
Extremely "back"ward);
Who played in
The playful sands—
That you didn't
Envy old Argus?

R.

Did You?

Did you ever sit
In a limousine,
With the maiden
Of your choice,
Who caressed
A long-haired poodle;
Who kissed his nose
With the reddest of
Rosebud lips, and
Hugged him close
To her warm—personality;
That you didn't wish
By all the sainted gods,
Of all the tribes,
That you could for
A brief season lead—
A dog's life?

R.





Emory Campus

1917



GILAND



DICKY



BAKER



PETERS



SMITH

PAN-HELLENIC COUNCIL



HENGE



BOSTWICK



SAWYER



BERRY



ARAB



REID



ELLINGHAM



LANE



HILL



SMITH



BERRY



CHRISTIAN





Emory Campus
1917



Pan-Hellenic Council

H. V. WEEMS, X Φ

J. P. McNATT

W. E. SMITH, Φ Δ Θ

President

Vice-President

Secretary-Treasurer

J. P. ADAMS, Σ Α Ε

E. B. BAKER, K Σ (HONORARY)

W. E. BOSTWICK, Σ Α Ε

P. A. BRAY, Δ Τ Δ

P. W. CHRISTIAN, Α Τ Ω

G. M. CLEMENTS, Δ Τ Δ

N. P. DICKEY, Σ Ν

H. S. GARLAND, K Α

F. R. LANE, Α Τ Ω

J. P. McNATT, K Α

W. R. REED, Π K Φ

L. P. ROGERS, Σ Ν

E. H. SANDERS, Π K Φ

J. B. SHAW, X Φ

T. C. SAUTH, Φ Δ Θ

W. E. SMITH, Φ Δ Θ

H. V. WEEMS, X Φ





Emory Campus

1917





Emory Campus
1917



Chi Phi Fraternity

Founded at Princeton, 1824

GAMMA CHAPTER

Organized 1869

Colors: *Scarlet and Blue*

FRATER IN FACULTATE

GOODRICH COOK WHITE

FRATER IN URBE

REV. W. K. BEANHAM

FRATRES IN COLLEGIO

WILEY QUILLMAN BLAIR

MILES LAFAYETTE GREEN

THOMAS LEONHARDT HARRISON

CHARLES HUBERT HOWELL

HAROLD QUILLMAN JONES

JAMES GEORGE LESTER

RALPH STEWART MCKINLESS

BENJAMIN FRANKLIN KELSO MULLINS

WILLIAM THOMAS PILCHER

JUDSON BONNER SHAW

WILLIAM CHESTER WARREN, JR.

JOHN NORMAN WATTS

HOWARD VINCENT WEEMS

RANSOM LITTLE WILKINS





L. 1877. 1000



Emory Campus

1917





Emory Campus
1917



Kappa Alpha Fraternity

Founded Washington and Lee University, 1865

EPSILON CHAPTER

Organized 1869

Colors: Crimson and Old Gold

Flowers: Red Rose and Magnolia

FRATRES IN FACULTATE

DR. J. P. BONNELL

DR. W. F. MELTON

PROF. H. H. STONE

FRATRES IN COLLEGIO

WINSTON STILES ALLEN

WILLIAM SANFORD ANKREW

CHARLES KNOX BIVINGS

FRANK LEE BIVINGS

JAMES BONNIE BLACK

SAMUEL CHARLES Candler

CLINTON DUNCAN CATHER

THOMAS JEFFERSON CATHER

ROBERT FLOWERS

WILLIAM HAMPTON FLOWERS

HALSEY SIMMS GARLAND

HAROLD HEAD

YANCY HILL

LOUIS PICKETT HUSLANDS

WILMOT SHIPP LITTLEJOHN

JAMES PAUL McNATT

JAMES EVANS MANGUM

KELLER FLETCHER MELTON

GUY ROBINSON

LEON FREDIE SMITH

ROBERT BIGHAM SMITH

DEAN ATKINSON STRICKLAND

WILLIAM ALFRED SUTTLES

WILLIAM PETERSON WATKINS





Emory Campus
1917





Emory Campus
1917



Phi Delta Theta Fraternity

Founded at Miami University, 1818

GEORGIA BETA CHAPTER

Organized 1871

Colors: *White and Blue*

Flower: *White Camellia*

FRATRES IN FACULTATE

PROF. R. H. BLACKSHEAR

DR. J. H. HINTON

PROF. J. P. HANMER

PROF. H. J. PEARCE

FRATRES IN COLLEGIO

DORWARD LEE BALLARD

TURNER ASHBY McCORD

WILBUR FISK BELL

LYTTON LEROY PASSMORE

ROBERT MATTHEWS BURR

DAVID HENRY POSE

BEVERLY MALCOLM CUTTENBEN

JOHN HARRELL POWELL

HENRY REID DEJARNETTE, JR.

THOMAS COOK SMITH

JULE WIMBERLY FELTON

WILLIAM ELDRIDGE SMITH

CHARLES HOWARD GUARDEAU, JR.

WILLIAM VERGEN SMITHWICK

THADDEUS GILMORE GREENE

FRANCIS SPEARS

WILBUR HOWELL HAMILTON

WALTER CALLOWAY STEPHENSON

GUY MORAY HICKS

JAMES PAUL WARWICK

JOHN MATTHEWS

JAMES LESTER WEDDINGTON, JR.

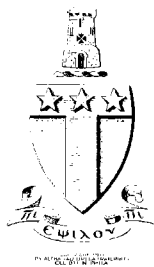
SAMUEL MORRIS MATTHEWS

ALVIN BUTLER WRIGHT

JEFFERSON DAVIS McCORD

EDWARD ALLEN WRIGHT







Emory Campus

1917





Emory Campus
1917



Alpha Tau Omega Fraternity

Founded at Richmond, Va., 1865

ALPHA THETA CHAPTER

Organized at Emory College, 1881

COLORS: *Sky Blue and Old Gold*

FLOWER: *White Tea Rose*

FRATRES IN FACULTATE

ELIAM F. DEMPSKY, A.B., B.D.

EDWARD K. TURNER, Ph.D.

FRATER IN URBE

WILLIAM T. BURT

FRATRES IN COLLEGIO

WALKER BOYD BAILEY

ROBERT HENRY HUMPHREY

CLINTON CLAY BOSTWICK

JOHN JASPER INGRAM

WILLIAM STEWART BUSH

WASHINGTON THOMAS IRVING, JR.

DAVID COLEMAN BUTLER

FOUNT REGINALD LANE

JOHN CALLAWAY CAUTHEN

OGLESBY ASHLEY LOWE

PRESLEY WARREN CHRISTIAN

REID MONFORT

SIMNEY SHEFFIELD COVINGTON

ORRLE HAMPTON STEVENS

JAMES EASON CROSS

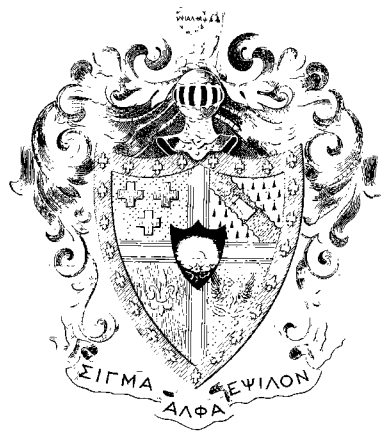
JOHN FRANK TERRY

HERBERT WILDER FOWLER

CLAY FLEMING WYNN

CLAMPTON PIERCE HARRIS







Emory Campus

1917





Emory Campus
1917



Sigma Alpha Epsilon Fraternity

Founded at the University of Alabama, 1856

GEORGIA Epsilon CHAPTER

Organized 1881

COLORS: *Purple and Old Gold*

FLOWER: *Violet*

FRATER IN FACULTATE

DR. T. H. JACK

FRATRES IN COLLEGIO

JAMES FRED ADAMS

HENRY HOMER ALLEN

WILBUR EARLY BOSTWICK

JOHN DAVID FINLAY

HARVEY WILSON FRASER

ISAAC ADKINS GIBSON, JR.

CLAUDE JEROME HICKS

WILLIAM PAUL KOLE

ARTHUR HUGO RICHTER

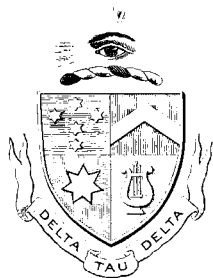
WILLIAM ERNEST ROGERS

WILLIAM BENJAMIN STUBBS, JR.

SAMUEL WESCOTT TOOLE

RICHARD B. WILSON





Copyright © by
Frank S. Hage,
2008



Emory Campus
1917





Emory Campus
1917



Delta Tau Delta Fraternity

Founded at Bethany College, Va., 1859

BETA EPSILON CHAPTER

Organized 1882

FRATER IN URBE

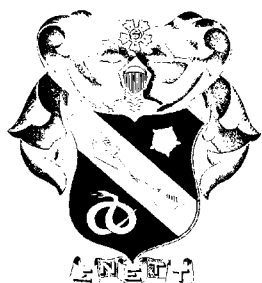
J. Z. JOHNSON

FRATRES IN COLLEGIO

CHARLES THOMAS BACON
RODERICK HENRY BALDWIN
PERCY ALGERS BRAY
GOODWIN MURICK CLEMENTS
JAMES RUDOLPH CLEMENTS
GEORGE WASHINGTON COBB
JOHN COLIN ENGLISH
HENRY HERMAN HUDSON
BRAMWELL CARVASSO KERR

JOHN WATSON LOGAN
DWAYNE DEFEW MADDOX
HERMAN WILKES MARTIN
LUTHER NATHANIEL PIPKIN
HENRY OSGOOD READ
RICHARD JACKSON SNELLING
WILLIAM ALBERT STROZIER
WALTER BLOUNT TRAMMELL







Emory Campus

1917





Emory Campus
1917



Sigma Nu Fraternity

Founded at Virginia Military Institute, 1869

XI CHAPTER

Organized 1881

COLORS: *White and Old Gold*

FLOWER: *White Rose*

FRATRES IN URBE

S. H. ADAMS

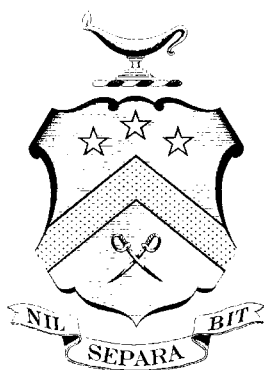
J. C. UPSHAW

FRATRES IN COLLEGIO

JAMES ROCHER CHAPPELL
A. COUNCIL DARLING, JR.
THOMAS JACKSON DARLING
NELSON FORE DICKEY
PAUL NORWOOD HARLEY, JR.
LEE MOSCHIEF HARRISON
PAUL HOWARD HODGE
J. SHARP JONES
MILES MALONE

LEONARD P. ROGERS
JOHN WILLIAM STEARHOUSE
H. INMAN TALBOT
KARL THOMPSON
ALFRED CULLEN TURNER
SIRLEY L. WHITE
WILLIS JOE WILKINS
CHARLES H. WILLIAMS

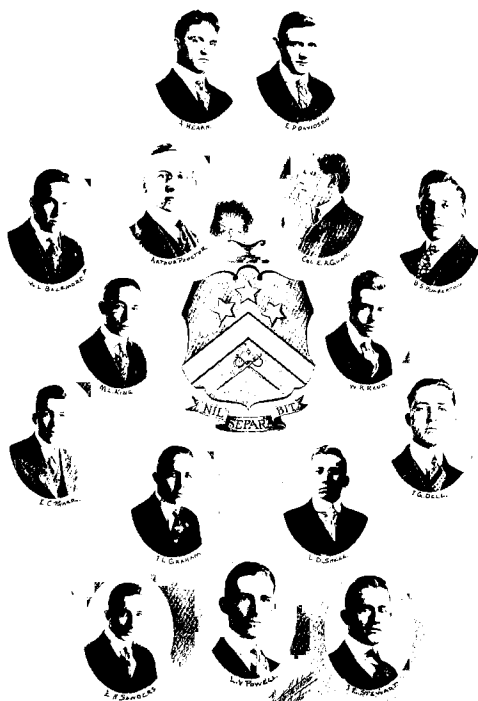






Emory Campus

1917





Emory Campus
1917



Pi Kappa Phi Fraternity

Founded at the College of Charleston, 1904

GEORGIA ETA CHAPTER

Organized at Emory, 1911

Colors: Gold and White

Flower: Red Rose

FRATER IN URBE

EDGAR ROSS GUNN

FRATRES IN COLLEGIO

WALLACE LEE BAZEMORE, JR.

ROBERT ASHLEY BUSH

ALBERT BRUCE DANIEL

EDWIN POTTER DAVIDSON

JAMES GLENN DELL

JAMES LOVETT GRAHAM

WILLIAM COY GRAY

JAMES WILEY GRIPPETH

ANTHONY HEARN

HUGHART MARK HENLEY

M. LUTHER KING

JOSHUA W. MESHEW

CLAUDE LEON PARIHAM

LEROY G. PARRHAM

BRYAN SEWALL PEMBERTON

EMORY C. PHARR

L. VERNON POWELL

ARTHUR PROCTOR

W. ROBERT REUD

EUGENE HENDRIX SANDERS

LOUIS DONALD SHELL

SAMUEL JAMES SHEPHERD, JR.

JAMES EDWIN STEWART

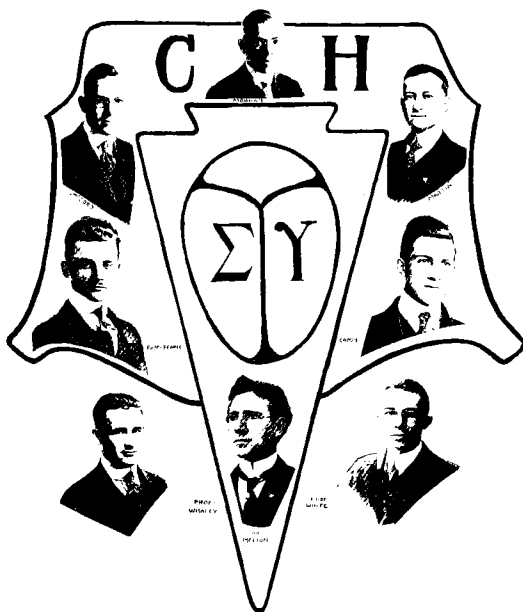
CARLOS JONES TYLER





Emory Campus

1917





Sigma Upsilon Literary Fraternity

Founded Millsaps College, 1900

ROLL OF CHAPTERS

SOPHOMORE	Seawater, Tenn.	COFFEE HOUSE	Oxford, Ga.
	University of the South		Emory College
CALUMET	Nashville, Tenn.	FOURSHOOTER CLUB	Durham, N. C.
	Vanderbilt University		Trinity College
OSAGE	Ashland, Va.	SCRIBES	Columbia, S. C.
	Randolph-Macon College		University of South Carolina
SENIOR ROUND TABLE	Athens, Ga.	ATTIC	Tusculum, Ala.
	University of Georgia		University of Alabama
ODD NUMBER CLUB	Chapel Hill, N. C.	GRUB STREET	Seattle, Wash.
	University of North Carolina		University of Washington
BOAR'S HEAD CLUB	Lexington, Ky.	GORDON HOPE	Williamsburg, Va.
	Transylvania University		College William and Mary
SCRIBBLERS	Oxford, Miss.	BLUE PENCIL	Davidson, N. C.
	University of Mississippi		Davidson College
KIT KAT	Jackson, Miss.	SPINN-HAMPDEN	Hampden-Sidney, Va.
	Millsaps College		Hampden-Sidney College
SCAVARS	Austin, Tex.	YE TABARD INN	Eugene, Oregon
	University of Texas		University of Oregon
	YE MEEHMB INN		Missoula, Mont.
	University of Montana		

COLORS: Dark Green and Gold

FLOWER: Jonquil

EMBLEM: Sacred Search

SPONSORS IN URBIS

MISS ANNIE SUE BONNELL

MISS EMILY MELTON

DOCTORES LITERARUM IN FACULTATE

DR. W. F. MELTON

PROF. H. J. PEARCE

PROF. G. C. WHITE

PROF. W. E. WHALEY

STUDIOSI LITERARUM IN COLLEGIO

J. EASON CROSS

J. D. McCORD

HERMAN W. MORTON

T. N. MORGAN

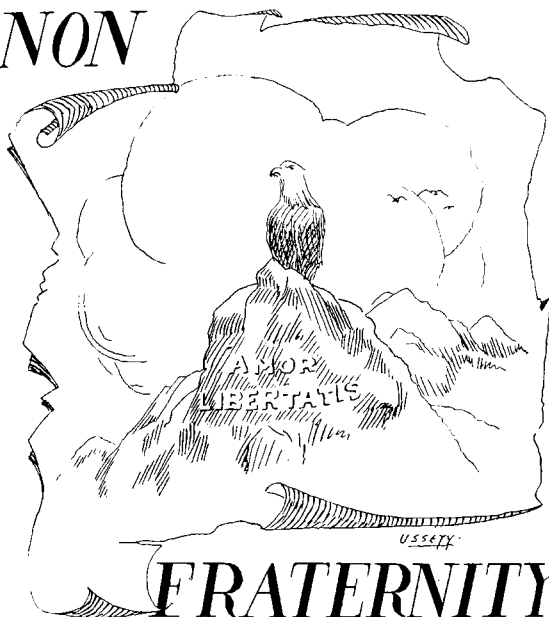




Emory Campus
1917



NON



FRATERNITY





60YD



14370



FORGAT



1951

SENIOR NONS



Summer



111



PATFORD



CHURCH



1100



0-00000





Emory Campus

1917



HUCKABEE



DILLON



PEARSON



FAHLE



HURLEY

JUNIOR -NONS-



BAKE



KUTSAGE



DOLAN



HOUTS



DICKEY



HAY



GRIFFIN



HUTTON





Emory Campus



History of Student Government Association

THE ideal student community is a true, thoroughly democratic organization. When the body concerned is reasonably large, there must be some definite arrangement for the working out of these various ideals. Emory does not pretend to have attained the fairest Utopian dreams of those interested in college life, but safe claim may be had to an efficient, thorough organization among the students. The power of running the machinery of student endeavor could not be left with a few, for however well the work might have been done, an arbitrary selection of these authorities would never have allowed harmony to be the outstanding quality of the *ensemble*. So a democratic and impartial method had to be found for choosing the officers and regulating their duties. So, in the year 1911, the Emory Student Government Association was formed, with the expressed object of bettering the entire array of student activity, and arranging a system whereby every student might have ample opportunity to partake in these various phases of endeavor. The literary societies had formerly directed the management of the publications, and thus general contribution was unintentionally and unconsciously discouraged. The Athletic Association had never had the support of the entire body of students, and athletics were of a rather inferior quality. A greater Emory was advocated by the new association, and a systematic plan of college development was entered upon.

The Central Board has general supervision of activities, and sees that all actions are carried on according to the constitution of the association. The Central Board is composed of the president, vice-president, secretary of the association, and the chairman of the various committees: Judicial, Athletic, Publication, and Greater Emory. The officers—those on the Central Board, and other minor officers—are elected in the annual popular election of the student body.

Each student pays an annual fee of \$4.00 into the Treasury. In return for this, every student receives the Phoenix and the Weekly, and is credited with a dollar payment on the Annual.

Each member of the student body has the right of franchise, and the privilege of holding office. Every man also has the right to take part in the college athletics, and be a spectator at all athletic contests.

This system of division of powers and responsibilities allows an equable and efficient management of all affairs of common interests, and gives each man an opportunity to do his bit for the development and amelioration of conditions.

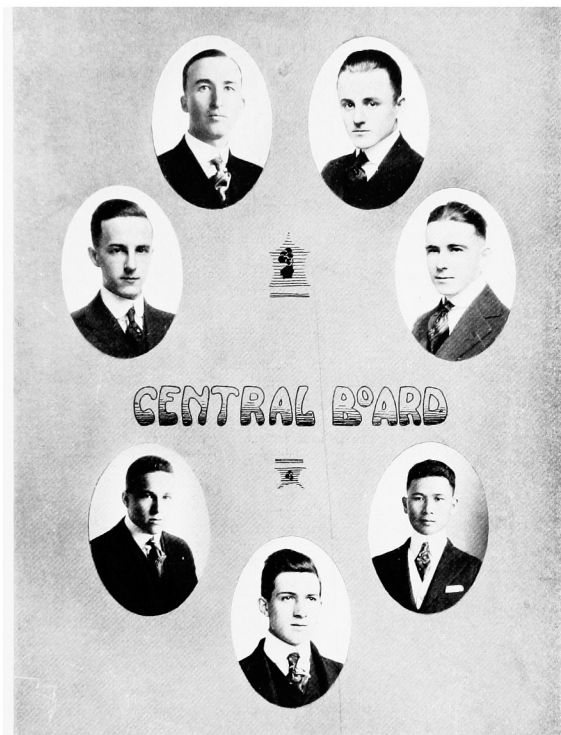
T. COOK SMITH, SECRETARY





Emory Campus

1917





Emory Campus

1917



A Mid-day Breeze

BY THOMAS N. MORGAN, JR.

When warmth and sultry stillness hover near,
And not a breath of coolness steals its way,
How welcome is the breeze that comes to cheer
The royal radiance of a summer's day!

How much of miki delight its coming brought!
So soft, and yet so potent and benign;
A legion come to rescue not more sought,
Nor could a courier bear a charge so fine.

A message from some blissful land it seems,
A voice which tells of regions that are blessed,
Where sunshine's not so lavish with its beams,
And cooling freshness brings a peaceful rest.

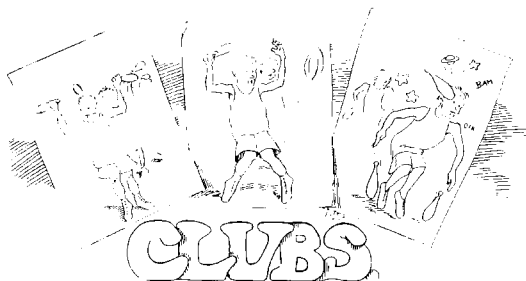
But just as quickly as it sprang to life,
Like some fair champion quite too shy to stay
And claim the laurels won in valiant strife,
So, noiselessly and soft it dies away.





Emory Campus

1917





Emory Campus

1917



Owls

Established 1906

COLORS: Red and Black

FLOWER: Night-Blooming Cereus

GLAUXES

W. S. ALLEN, K A	F. R. LANE, A T Ω
A. C. DARLING, JR., Σ N	J. D. MCCORD, Φ Δ Θ
H. R. DEJARNETTE, JR., Φ Δ Θ	J. P. McNATT, K A
N. P. DICKEY, Σ N	L. P. ROGERS, Σ N
H. S. GARLAND, K A	T. C. SMITH, Φ Δ Θ
J. J. INGRAM, A T Ω	

GLAUXES EX ARCHES

G. M. ACREE, X Φ	C. A. LESTER, X Φ
W. S. ALLEN, K A	HUGH MALLEY, A T Ω
H. H. ARMON, Σ N	J. B. MALLEY, A T Ω
R. H. ARRINGTON, A T Ω	G. W. MATTHEWS, JR., Φ Δ Θ
J. E. ASKEW, K A	J. D. MCCORD, Φ Δ Θ
B. D. BANKS, A T Ω	J. P. McNATT, K A
G. D. BARNETT, A E Xi	P. A. MEGAHIE, Σ N
J. P. BENTON, Φ Δ Θ	D. J. MIZE, Φ Δ Θ
J. L. BLACKWELL, A T Ω	T. B. NEAL, X Φ
L. M. BLAIR, X Φ	B. D. NEWSON, K A
J. F. BULLARD, A T Ω	J. M. OOTLER, K A
W. H. BURT, A T Ω	C. E. PATILLO, X Φ
E. A. BURKHARTER, A T Ω	F. A. PATILLO, X Φ
S. C. Candler, K A	H. J. PEARCE, Φ Δ Θ
A. S. CONVERSE, Σ A E	T. J. PEARCE, Φ Δ Θ
J. C. CRUTTENDECK, Φ Δ Θ	A. S. PENDLETON, Σ A E
T. F. CROWELL, Σ A E	E. R. POTTER, A T Ω
A. C. DARLING, JR., Σ N	J. L. PRINCE, Σ A E
J. C. DAVIS, X Φ	W. L. RHODES, X Φ
H. R. DEJARNETTE, JR., Φ Δ Θ	A. C. RICHARDSON, Φ Δ Θ
N. P. DICKEY, Σ N	TURNER ROCKWELL, K A
W. H. ECKFORD, X Φ	L. P. ROGERS, Σ N
J. P. FAGAN, Σ A E	L. P. SHELTON, Σ N
W. W. FOOTE, Φ Δ Θ	T. C. SMITH, Φ Δ Θ
H. N. FULLER, Σ A E	H. M. SPARE, X Φ
H. S. GARLAND, K A	A. P. STEWART, X Φ
R. M. HARRIS, X Φ	R. N. STOKES, Σ A E
B. H. HOLT, Φ Δ Θ	G. H. STONE, K A
J. J. INGRAM, A T Ω	R. B. TRIMBLE, K A
G. M. JACKSON, X Φ	J. S. WIGHT, Φ Δ Θ
W. P. JOHNSON, X Φ	C. G. WILLIAMS, Σ N
T. C. KIMBALL, K A	G. O. WRIGHT, Φ Δ Θ
F. R. LANE, A T Ω	





Emory Campus

1917



JOHN



JOHN



JOHN



JOHN



JOHN



JOHN



JOHN



JOHN



JOHN



JOHN



JOHN





Emory Campus

1917



Susie Dahms

(With apologies to "The Lady of the Decoration")

MOTTO 1: ? ? ? ?

MOTTO 2: ?

COLORS: *Pale Pink Eyes and Blue Hair*

FLOWER: *Jimson Weed*

PLACE OF MEETING: *Last Night*

SONG: "Oh, What a Difference in the Morning"

CHAPTERS

Wesleyan College (Alpha Chapter)

Emory College (Beta Chapter)

Whitmore College (Gamma Chapter)

EMORY SUSIES

NELSON F. DICKEY

EDWARD T. FLANDERS

HAILEY S. GARLAND

THOMAS C. SMITH

SUSIE IN URBE

MISS ANNIE SUE BONNELL (Alpha Chapter)

WESLEYAN SUSIES

MISS RUTH HOUSER

MISS KATHERINE CLECKE

MISS HELEN PHILLIPS

MISS MARGO COOK

INSPECTOR OF CHAPTERS

MISS MARY ROBERTSON (Alpha Chapter)





Emory Campus

1917





Emory Campus

1917



Chi Sigma Chi Chanticleer Club

SOPHOMORE CLUB

Founded 1910

MOTTO: *"Any old rooster can crow, but it takes a Chanticleer to deliver the goods."*

SONG: "Pale Moon"

FLOWER: Egg Plant

COLORS: Rhode Island Red and White Wyandotte

OLD ROOSTERS IN COLLEGE

W. S. ALLEN, K A	F. R. LANE, A T Ω
A. C. DARLING, Σ N	L. P. ROGERS, Σ N
J. J. INGRAM, A T Ω	J. B. SHAW, X Φ
MILES MALONE, Σ N	

FACULTY ROOSTER

PROF. JOHN BRADBURY PEEBLES, Σ Φ

YOUNG ROOSTERS

W. S. ASKEW, K A	T. G. GREENE, Φ Δ Θ
E. B. BAKER, K Σ	J. S. JONES, Σ N
C. C. BOSTWICK, A T Ω	O. H. STEVENS, A T Ω
W. Q. BLAIR, X Φ	L. L. PASSMORE, Φ Δ Θ
T. J. DARLING, Σ N	H. T. TALBOT, Σ N
W. H. FLOWERS, K A	

OLD ROOSTERS

E. M. ACKER, X Φ	G. W. MATHEWS, Φ Δ Θ
W. S. ALLEN, K A	H. C. MORRISON, X Φ
B. D. BANKS, A T Ω	T. B. NEAL, X Φ
L. M. BLAIR, X Φ	C. E. PATILLO, X Φ
L. P. BONDURANT, Φ Δ Θ	F. A. PATILLO, X Φ
DOWNSIE BROWN, Σ A E	W. M. PALMER, X Φ
E. A. BIRKHALTER, A T Ω	E. R. POTTLE, A T Ω
S. C. CANDLER, K A	GLENN POWELL, Φ Δ Θ
A. C. DARLING, Σ N	W. M. POPE, Φ Δ Θ
R. S. DUNCAN, Σ A E	L. P. ROGERS, Σ N
R. E. DOROUGH, X Φ	T. E. ROGERS, Σ N
W. H. ECKFORD, X Φ	J. B. SHAW, X Φ
E. T. FLANDERS, Σ N	BOYD SUTTON, Φ Δ Θ
G. K. JOHNSON, K A	R. M. STICKLAND, K A
W. P. HESBROCK, K A	G. O. WRIGHT, Φ Δ Θ
C. L. HOYT, Φ Δ Θ	C. G. WILLIAMS, Σ N
J. J. INGRAM, A T Ω	W. M. WEAVER, Σ A E
W. T. KNIGHT, Σ A E	P. V. WALKER, Φ Δ Θ
F. R. LANE, A T Ω	L. H. WILKINS, X Φ
MILES MALONE, Σ N	P. M. WHITING, X Φ
P. M. MYSDREN, K A	A. R. WILLIAMSON, Φ Δ Θ





Emory Campus

1917



JONES



ASKEY



STEVENS



BAKEN



GREENE



BLAIR



BOSTWICK





Emory Campus
1917



Beta Omicron Phi

FRESHMAN CLUB

Founded 1913

MOTTO: "Who follows the skull, goes right; who as a baby cries at night"

SONG: "Pretty Baby"

FLOWER: *Funeral Wreath*

COLORS: *Freshman Green and Flesh Red*

INFANT BABIES

ROBERT FLOWERS, K A

L. HARMON, X Φ

T. L. HARRISON, Σ N

DG. T. H. JACK

P. W. KOLB, Σ A E

O. A. LOWE, A T Ω

J. H. POWELL, Φ Δ Θ

L. P. SMITH, K A

S. W. TOOLE, Σ A E

R. L. WILKINS, X Φ

OLD BABIES IN COLLEGE

J. P. ADAMS, Σ A E

W. S. ASKEW, K A

F. L. BYINGS, K A

W. O. BLAIR, X Φ

A. C. DARLING, Σ N

H. S. GARLAND, K A

I. A. GIBSON, Σ A E

T. G. GREENE, Φ Δ Θ

F. H. HARLEY, Σ N

J. J. INGRAM, A T Ω

MILES MALONE, Σ N

T. A. MCCORD, Φ Δ Θ

J. M. PEARCE, Φ Δ Θ

J. B. SHAW, X Φ

T. C. SMITH, Φ Δ Θ

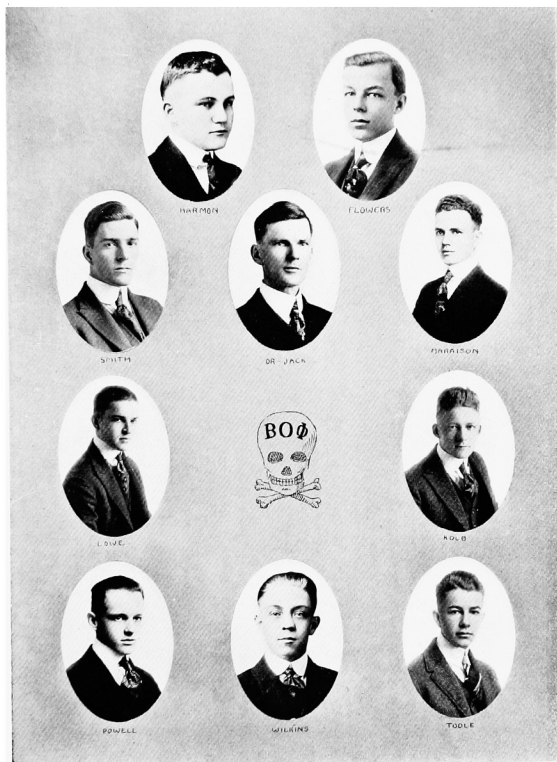
W. E. SMITH, Φ Δ Θ





Emory Campus

1917





Emory Campus
1917



Ministerial Association

HONORARY MEMBERS

PROF. R. H. BLACKSHEAR

DR. A. M. HUGHLET

DR. E. F. DEMPSEY

DR. W. F. MELTON

REV. R. F. FRASER

REV. M. S. WILLIAMS

REGULAR MEMBERS

J. H. ALLISON

McLELLAND

E. P. BILLUPS

W. F. PAFFORD

T. E. BYRD

W. M. PEARSON

P. E. CHAPPELL

PENBERTON

CHAPPELL

C. B. RAY

G. W. COBB

A. RICHTER

F. M. GAINES

H. R. ROSE

A. HEMN

E. H. SANDERS

GUY HICKS

W. B. SANDERS

R. G. HOSALE

L. P. SMITH

ROY HOUTS

W. W. STANCL

JENKINS

J. B. WADDELL

J. W. LEE

W. P. WATKINS

D. W. LAM

O. S. WILSON

J. W. O. McKIBBEN





Emory Campus

1917





Emory Campus

1917



Bachelor Club

"It is better to dwell in a corner of the housetop than with a brawling woman in wide house." Proverbs 21:9.

Canto XV

I will sing of the Bachelors' Club, my friend,
If to me your ears, oh, yet you will lend.
Composed 'tis of men who sometimes in life
(Some early, some late) have thought that
a wife
Is God's direct punishment unto man;
And they have resolved to keep if they can
This curse from falling upon them; fell
woe!
'Tis hard far to keep off this curse all know.
Oh, hope for this band of celibates, may
No damsel chaos-raising e'er come our way.

In Memoriam

Sacred to the Memory of our Brother
BRANDJI ELLIS
who has fallen a victim to matrimony.
By Imperial Edict we confer upon him the
title and office of
HORRIBLE EXAMPLE
May his condition and example serve as an
eternal warning to others of our order
who contemplate revoking their
sacred vows.
"The wages of sin are death."





Emory Campus

1917



GARLAND



MC CORD



WEEMS



ROGERS



BERKEY



KANE



CHRISTIAN



DARLING



WARNER



CLEMENTS



SMITH



MILLER



ALLEN



STAPLETON



DE JARNETTE



CHITTENDEN



TAYLOR



FELTNER



LESTER



SHAW





Emory Campus

1917



W. B. RICE



LEDLEY JOHNSON



ROY EMMETT



SEWELL DIXON



WALKER



S. C. DOBBS, JR.



DENNIS WALDBROOK



BILL BAKER



WM. GRIFFITH WICK



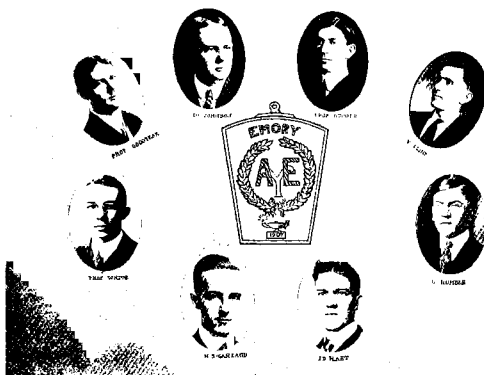
J. C. BROADNAX





Emory Campus

1917



Alpha Epsilon Upsilon

HONORARY SOCIETY

PROF. PIERCE CLINE, A.B., '16	PROF. LESTER RUMBLE, A.B., '15
HALSEY S. GARLAND, A.B., '17	PROF. J. G. STIPE, A.B., '07
PROF. N. A. GOODYEAR, A.B., '04	HOWARD V. WEEMS, A.B., '17
PROF. J. D. HART, A.B., '16	PROF. G. C. WHITE, A.B., '08
DR. J. H. HINTON, A.B., '06	JAMES GEORGE LESTER, B.S., '18
DR. E. H. JOHNSON, S.B., '16	HERMAN MARTIN, A.B., '18
PROF. DOUGLAS RUMBLE, A.B., '04	JOHN LOGAN, A.B., '18

The Alpha Epsilon Upsilon Honorary Society was organized in the year 1907 for the purpose of promoting scholarship and friendship among the students and graduates of Emory College. Membership in this organization depends upon class standing and members are elected annually from duly qualified students, or graduates of Emory College. Selection from each class before graduation never exceeds one-fifth of its membership. In addition to scholarship, and with a view towards making membership an honor all the more to be cherished, high moral character is a qualification for membership.

The following are the scholastic requirements for eligibility:

1. An undergraduate who has been in college for at least eight terms, and who has attained at either period of eligibility an average grade of 85 shall be qualified for election.
2. An undergraduate who has been in college for less than eight terms, but for as many as five terms, and has attained an average grade of 9.4 shall be duly qualified for election.





Emory Campus

1917



W. E. PATTERSON - PRES.



S. A. HENDON - VICE PRES.



H. L. PEARSON - SECRETARY.



W. H. DICKEY.

SPARKS CLUB



E. C. KERN.



W. H. PEARSON.



S. L. BALLARD.



J. H. DICKEY.



W. H. DICKEY.



T. B. BYRD.



S. D. WILSON.



R. H. DICKEY.



J. H. DICKEY.



RUFUS ANDLEY.



ALPHEUS WINKING.



WALLACE ANDREWS.





Emory Campus

1917



Rhinehardt Club

PIERCE CLINE

PIERCE HARRIS

MARK HULSEY

CASIN KITCHENS

D. W. LIM

J. B. RAGSDALE





Emory Campus

1917



F. M. GALT
RELIGIOUS MEETINGS



G. M. BOYD
PRESIDENT



D. W. ALLEN
SECRETARY



H. R. ROSE
TREASURER



C. P. HARRIS
PROSSOR STUDY



J. W. FENTON
BELL STORY



W. B. SANDERS
V.P. PAGE



H. V. WEISS
FARMER, TOWN

CABINET



E. A. CROSS
MEMBERSHIP COM.



D. G. GRAY
SPEAKING, DANCE, COM.





Emory Campus

1917



History of Y. M. C. A.

MANY years ago the Y. M. C. A. was organized as an aid in the promotion of the principles and purposes on which our Christian institution was founded. Although we have had no Y. M. C. A. building, the association has always found an attractive and inviting home in Few and Phi Gamma halls. Since Emory College has only represented the college of liberal arts, the size of our student body has not justified the employment of a Y. M. C. A. secretary. But from the student body there have been such men elected as presidents and cabinet members, who have not allowed the "C" in Y. M. C. A. to lose its significance and they have initiated movements and fostered ideals which have done much toward creating a moral and religious atmosphere among the students. Among those who have been actively engaged in the work was Mr. Arthur Brown, who afterwards became very prominent in the Y. M. C. A. work.

The weekly meetings, which are held Saturday evening are usually led by members of the faculty, local ministers, out-of-town speakers and members of the Y. M. C. A. Subjects which pertain vitally to character building and the life work of the students are discussed. In addition to this, Bible and missionary study classes are held on Sunday afternoon in the various fraternity chapter houses, boarding houses and dormitories.

Great progress has been made this year in the program of the regular meetings. We are trying to get as many delegates as we possibly can to send to the Blue Ridge Conference this summer. We were able to send five delegates last summer, all of whom reaped great good from it.

With the expansion of Emory College into a university, we trust that it will be also a means of broadening the sphere of the Y. M. C. A. May it not be a false prophecy that some day on the campus of Emory University there will be erected a commodious Y. M. C. A. building and that the work will merit and command the service of an efficient secretary.

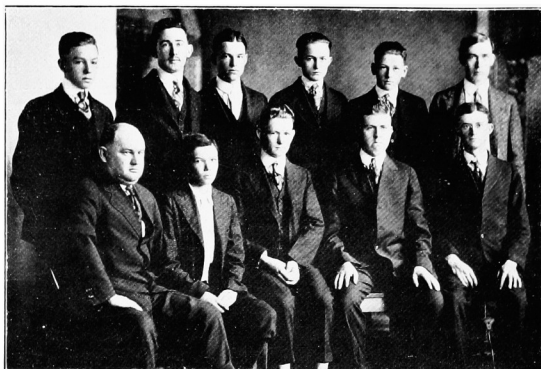
D. W. LUM, Secretary





Emory Campus

1917



Young Harris Club

SLUGAN: "Duty and Hot Chocolate"

PERCY A. BRAY
JAMES E. MANGUM
J. HERMAN ALLISON
PAUL FRASER

President
Vice-President
Secretary
Treasurer

RALPH BENTON
R. H. BLACKSHEAR (HONORARY)
HERBERT EDGE
H. W. KITCHENS (HONORARY)
LAL LYON
J. W. LEE
J. W. O. MCKIBBEN
PRENTICE MULLICAN
O. M. NEELY (HONORARY)
J. WORTH SHARP
Not in picture





Emory Campus

1917



Orchestra

J. H. POWELL

L. P. HUSBANDS

L. L. PASSMORE

B. M. CRITTENDEN

Drums

Trombone

Cornet

Cornet

K. F. MELTON

I. A. GIBSON

J. W. LOGAN

R. M. BURR

Piano

Violin

Violin

Clarinet





Emory Campus

1917



Mandolin Club

W. S. ALLEN

W. Q. BLAIR

T. G. GREENE

C. P. HARRIS

K. F. MELTON

W. E. ROGERS





Emory Campus
1917



LIBRARY





Emory Campus



History of Phi Gamma

EMORY COLLEGE was founded shortly after the great Hayne-Webster debate in congress and while Calhoun, Clay and other great speakers were still in the Senate. One of the first acts of the student body was the founding of a debating society. Phi Gamma was organized March 8, 1837, at a residence, now the Young Harris Helping Hall. George W Stone was elected first president.

Money was raised and a small wooden structure was erected on the campus just in front of where the present hall stands. Soon the society became so robust that it was decided to organize a sister society to promote interest in the debates, so fourteen members withdrew and on August 10, 1838, another society was organized named Few, after the first president of Emory College.

The increasing prosperity of the society caused it to become dissatisfied with the small hall of wood, so with the help of funds the members erected the present hall. It was furnished slowly until it has acquired the present complete furnishings.

At commencement, 1873 occurred the first champion debate between the societies with Phi Gamma winner. Since then these debates have been annual with almost an equal number of victories to the credit of each society.

It is a significant fact that Emory has never lost a series of inter-collegiate debates and shows that the purpose has remained the same throughout the years—"To help men to help themselves and be of service to their fellow men."

F. L. BAXTER, Historian





Emory Campus

1917





Emory Campus
1917



Roll of Phi Gamma Literary Society

ALLEN, H. H.	MCKINPUS
BELL	MULLISS
BRAY	MONTFORT
BUSH	MCNATT
BUTLER	MCCORD
BIVINGS, C. K.	MOORE
BIVINGS, F. L.	FITCHER
CLEMENTS, G. M.	POER
CLEMENTS, R.	RICHTER
COVINGTON	ROGERS
CROSS	SHAW
CHAPEL	SMITH, T. C.
DEJARNETTE	SMITH, W. E.
GARLAND	SMITH, L. P.
GREEN	SMITH, R. B.
HAMILTON	STROZER
HARLEY	SUMNER
HARMON	STURBS
HUSBANDS	STRICKLAND
HANCOCK	SUTLES
KERR	WEBB
LITTLEJOHN	WILSON
LESTER	WEEMS
MATHEWS	WILLIAMS
MELTON	WARREN





Emory Campus 1917



History of Few Literary Society



N the earliest days of the republic the man who could present his views in such a way as to carry conviction was the man who gained honor and popularity in the minds of the American citizens. For this reason oratory and debate were greatly magnified by our fathers and especially by the educated men and at the educational institutions.

One year after the founding of Emory College when sharp intellect and effective speech were requisite to good citizenship, Phi Gamma Literary Society was established. The increase in the number of students and the immense popularity of such a feature in college work soon made it evident that another institution of the same nature was essential. So on August 10, 1839, fourteen spirited debaters and loyal members of Phi Gamma withdrew and organized themselves into a society, the purpose of which was "The promotion of virtue and patriotism, the cultivation of forensic powers, and for the sake of general improvement in science and literature."

The society thus organized was named "Few." "In deference to the illustrious name and eminent virtues of the first president of Emory College, Ignatius A. Few."

The minutes of the early days show an intense loyalty to the society on the part of its members. The discussions were long and heated and the minutes indicated that the debates continued sometimes for the entire day, without a decision. On September 26, 1840, a resolution was introduced to provide the society with a permanent home; as a result, the present building was erected.

Throughout three-quarters of a century Few has enjoyed remarkable success. Her sons have won success and renown in every phase of college life and have become prominent in the busy scenes of life, in the activities of both church and state.

Only one time has there been an interruption in the literary work of the society. This occurred during the bloody civil strife which called for all of Emory's sons to lay down the pursuits of art and literature and take up the sword and fight for principle and conviction. During these four years the two society halls were converted into hospitals for the wounded Confederate soldiers.

When the war was ended, college and society work was resumed. Two of Few's members survived—Mr. Roberts and Rev. Charles Lane. They elected them-





Emory Campus

1917



selves president and secretary and began at once to elect and initiate new members. Since then the membership has been increasing yearly until the matriculation book, presented by Mr. J. E. Bonnell, shows a list of over twenty-one hundred names.

Among those who received their training in Few, and have gone forth to reflect upon Few and Emory College are such men as Judge John S. Sandler, Dr. I. S. Hopkins, Dr. James E. Dickey and Rev. C. C. Jarrell.

Few Society has been one of the most potent influences of Emory College since its foundation.

Relying upon her record in the past, her power in the present, and her prospect for the future, and under her motto, "Pro virtute et patria," she can expect only unbounded success and prosperity.

The Difference

By THOMAS N. MORGAN, JR.

I love the rose tint of dawn,
Because it brings the day;
And the wealth of opening flow'rets,
For they foretell of May.

I love the restful hour that brings
A peaceful, quiet, mood;
And the lonely woodland pathway
Which offers solitude.

Yet with this love another dwells,
More warm and close by far;
Those I love for what they promise,
But you, for what you are.





Emory Campus

1917





Emory Campus

1917



Roll of Few Literary Society

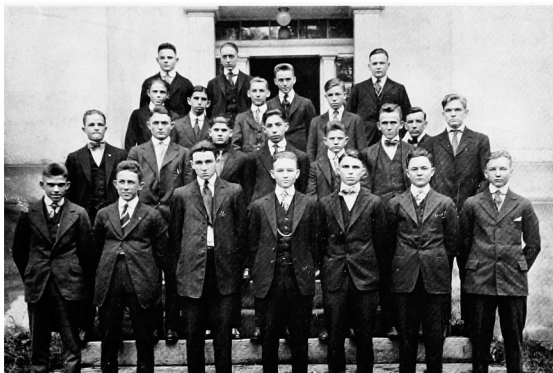
ALLEN, W. S.	LOGAN, J. W.
ALLISON, J. H.	MANGUM, J.
BACON, C. T.	MACKEY, R. P.
BALLARD, D. L.	METTS, T. L.
BALDWIN, R. H.	McLELLAN, A. K.
BOLAND, C. G.	MURRAY, A. W.
BOLAND, P. C.	MARTIN, H.
BILLUPS, F. P.	NORTON, R. S.
BOYD, G. H.	PAFFORD, W. F.
BYRD, T. E.	PEABCE, J. M.
CADE, C. D.	PEARSON, H. L.
COOK, S. P.	PEARSON, W. M.
COOK, H. H.	POWELL
COOK, L. P.	PENNINGTON, G. A.
COUD, G. W.	POPE, J. P.
CANTRELL, A. L.	RAGSDALE, J. B.
DICKEY, W. J.	RAST, J. M.
DICKEY, D. W.	RAY, C. B.
DUNAWAY	STANGL, W. W.
DUNCAN	SANDERS, E. H.
FLIZER	SANDERS, W. H.
FELTON, J. W.	SPEARS, F.
FLOWERS, ROBERT	SHARP, J. W.
GRAHAM, J. F.	STEPHENSON, W. C.
GAINES, P. M.	SPRAYBERRY, M. A.
GREEN, F. M.	TARDLEY, Z. C.
HOSALE, R. C.	THOMASTON, W. L.
HILL, YANCY	TRAMMEL, W. B.
HOUTTS, ROY	USSERY, R. S.
HEARN, A.	WHITE, G. L.
HICKS, GUY	WICKER, S. W.
HARRIS, C. P.	WRIGHT, A. B.
HULSEY, MARK	WRIGHT, E. A.
JONES, H. Q.	WADDELL, J. B.
KING, M. L.	WATKINS, W. P.
LANGSTON	WORDALL, A. B.
LIMM, D. W.	





Emory Campus

1917





Emory Campus 1917



ROY EMMETT

PRESIDENT

THE JAMES E DICKEY LITERARY SOCIETY



LEDLEY JOHNSON
VICE-PRES-



WALKER



MISS
CHAPLAIN

SECRETY & TRES-





Emory Campus

1917



RAY DAVIS
1st Yr. Fresh



B. C. DOBSON, JR.
1st Yr. Fresh



JOHN HURREST
1st Yr. BCC & Fresh

THE WARREN A CANDLER LITERARY SOCIETY



SAMUEL SMITH
2nd Yr. Fresh



RUFUS ANSLEY
2nd Yr. Fresh



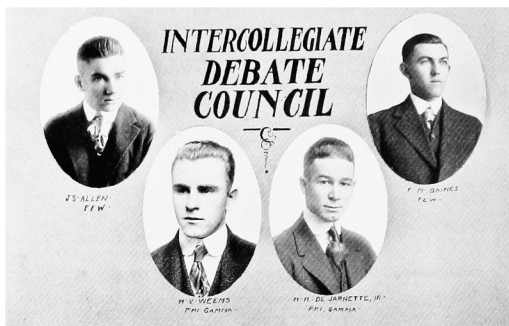
BILL BARKER
2nd Yr. BCC & Fresh





Emory Campus

1917



Inter-Collegiate Debate Council

FACULTY MEMBERS

PROF. G. V. WHITE, *President*

DR. E. H. JOHNSON

DR. W. F. MELTON

PROF. J. G. STIFE, *Secretary*

DR. E. F. DEMPSEY

DR. T. H. JACK

STUDENT MEMBERS

Phi Literary Society

W. S. ALLEN

F. M. GAINES

Phi Gamma Literary Society

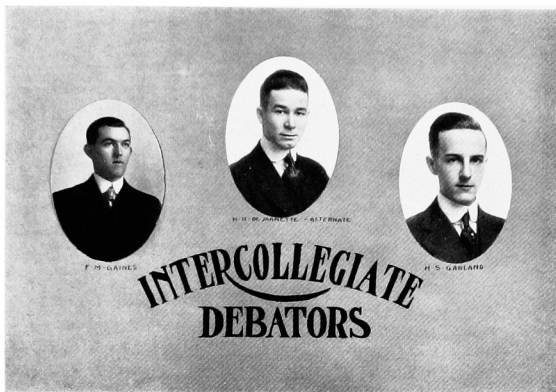
H. R. DEJARNETTE

H. V. WEEMS





Emory Campus
1917



Inter-Collegiate Debaters

VERSUS DAVIDSON COLLEGE

F. M. GAINES

H. S. GARLAND

H. R. DEJARNETTE, *Alternate*





Emory Campus

1917



J. S. ALLEN



A. W. MURRAY



MARK HUCSEY

FEW

CHAMPION DEBATERS



P. A. BRAY

PHI GAMMA



J. B. SHAW



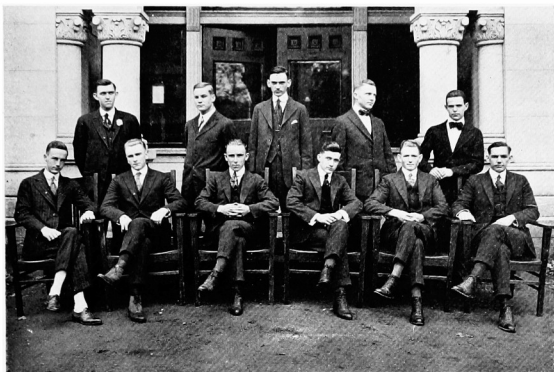
H. R. DE JARRETÉ





Emory Campus

1917



Impromptu Debaters

SUBJECT: "Resolved, That one girl and two boys is a happier crowd than one boy and two girls." (It is conceded that none of these are kinsfolk, and that all of them are either loving, being loved, or wanting to be loved.)

FEW WINNERS: GAINES, LIM, BYRD, STEPHENSON, RAST and RAGSDALE

PHI GAMMA: WERMS, SMITH, BRAY, GARLAND, CROSS and ENGLISH





Emory Campus

1917



W. S. BARNES
FEN.

FRESHMAN DEBATORS



T. C. DYER
FEN.



GUY HILL
FEN.



H. D. ELLIS
FEN. GORDON.



M. C. BROWN
FEN. CAMPBELL.



L. P. SMITH
FEN. WATSON.



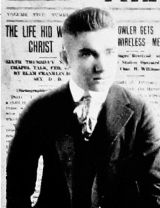


Emory Campus
1917



THE EMORY WEEKLY

THE LIFE HIDDEN IN
CHRIST



OWLER GETS WIRELESS MESSAGE

LIFE

By W. Ernest Hayes.

Life's joys are in the morning breeze—
 Playing for a laughing end,
Kissed by the morning pathing
 With the sweet rose told
Life's a merry riding spring day
 With all freckled little shivers,
Lovers' glances often oft become a sight—
 Whisked at once from the love,
Life's a plucky battle mode—
 Cavied by the
Thrust at the
 Heart,

**BIG OPPORTUNITY FOR
GEORGIA BAPTISTS**



3 NOW BUSINESS

GLEE CLUB
PLS
MACON



F. C. Poland

[illegible]

Author: J. P. McHale

[illegible]

DE GRUYTER J. N. S. 2016

[illegible]

1. <i>Isopogon</i> <i>diversiflorus</i>	L.A. Gibson	Regional Director
2. <i>Isopogon</i> <i>perfoliatus</i>	W. J. L. Gibson	Regional Director



N.Y. 6-0072
 As of 12/05





Emory Campus
1917



THE EMORY PHOENIX



THOS. N. MORGAN JR.
- EDITOR IN CHIEF -



PERCY A. BRAY
BUS. MGR.



E. H. SANDERS
LITERARY EDITOR



A. C. DARLING
ASST. BUS. MGR.



H. V. WEEMS
EXCHANGE

FEBRUARY, NINETEEN SEVENTEEN





THE WHOMPUS

WE COVER POLITICS LIKE THE MOLD

Five Cents Per Copy

OXFORD, GA., April 10, 1915.

Vol. 5, No. 3

WHOMPUS FOLIES
OF FOOLISH 1915

Chief Slick Timmons has got the right idea on all the best orders in the political world—and is here with handling out the richest crowd.

Here there, Sam Walton, keep your hands on the cash machine and history of the Fifties of 1955 as they pass through Marshall Park. We hate to ruin off these subjects, too, but the grass widows, and anyone who takes upon a responsible right to be old. No other.

Amid the big
Doc's handling
power to allow
his suit on a
"The
the house-
taken the
charge. It
only the
"The
just to
served as
"I hope
best, all
the poli-
-lost most
"I don't
to replace
down with
change. I
ref the
for a girl
was going
to be
"I hope
have playing
"He is the
to mark
and steady
deals with
the in-
fluence of
the police-
man. There
isn't the
what you
would sell
to him
"He's
handling
and man-
aging! A fat
"Doc" Di

Julius' Crab tree
has been burned
and don't look like a chance if it should
tackle him. When, when the little
worms in the street crawl out of their
way. He tries to keep his position
and keep from flying, but his eyes are
burning away. He says he's
from Florida, but the state has
Missouri. Let's go to the center.

The North Raker thinks he's a Florida
Moose, but he's a worm. If he
doesn't jump for Oshkosh, then
only reason why he had his name
placed on the ballot is that he had a
dog he couldn't spend. It was most
likely and had a hole in it. He tried
to think with it, but it didn't work.

SHAMROCK JOINES
ON HOT TRAIL

[illegible][illegible]

EASTER EGG HUNT IN SHAKERA

[illegible][illegible]

OLD B. M. IN NEW YORK
REMEMBERS WHOMPUS

[illegible]

...which he found almost
...and Taylor and Thompson.
...who think their fishing line
...is a shame in the realm of fifth
...grade.
...for hours, but
...water-skiing
...to practice
...were young Mac
...and his brother.
...the man—he always, when Tam
...will tell you that. Can any
...have promised
...all.
CRANSTON WILLIAMS
...and that always have gotten
...some thought last year, but jump
...lobsters, there isn't going to be
...any fish.



"Doc" Dickey
Bus. Mgr.



"Fritz" Lane
Office Boy





Emory Campus

1917



THE FATED

The "Prof's."

1

Friend "Madam" is surely a sight,
His brain is one of great might;
While building a coop,
He nailed himself up,
And stayed in that place until night.

2

"Suk." J. is the boss of this place;
Greatness beams in his face;
In the "poker" of life,
Life's gamble and strife,
You can bet he'll sure be an ace.





Emory Campus

1917



The "Profs."

For "Zeke" all Latin's a grip;
He shoots you straight from the hip.
To talk, by jingo,
In that Dago lingo,
Has on him a tightening grip.

4

Old "Foxy" is clever as sin,
He kicks up a terrible din;
He don't give a rap
Just so you clap
When his "anecdotes" come to an end.

5

"Dude" Boyd is looney on Greek,
Or else he never will speak;
But how can you study
In "attie," my bobby,
If your roof should happen to leak?

6

For Shingler all "Chem." is a pleasure,
His soul is absorbed in his treasure;
To delve in a mess
Of sweet H₂S
Delights this "prof." without measure.

7

"Prof." Gee is just and he's fair,
"Zoo" lab's his favorite lair;
To curve on a worm
And watch the beast squirm
Makes him toss his hat in the air.

8

"Mutts" M. is nuts o'er a joke;
Some of them cause you to choke;
His course is full
Of pure English bull;
But aside, he's a jolly good bloke.





Emory Campus 1917



The "Profs."

9

"Nag" ever is heard loud to neigh—
Voice music's his pleasure by day;
His hobby not herbs,
But horrid French verbs,
Which surely for him are "an' fat."

10

"Doc" Jack makes everyone read
Till his noodle seems going to seed;
When "Jackie" will hammer on
Boccaccio's *De Cameroti*,
Makes reading a pleasurable need.

11

"King" Elan is pompous in air—
Though rapidly losing his hair,
A Biblical ten
Is a popular sin;
He's awfully generous and fair.

12

"Sephatus," product of Stone,
Is Emory's consummate bone,
To him the best wine
Is a library fine,
Which has caused us many a groan.

13

"Froggie" is easy to like,
Though he raises Cain in his "psyche";
He can tell if you're lazy,
Idiotic or crazy,
Whether Irish, Spanish or "Kike."





Emory Campus

1917



Dooley's Diary



WITH tears dampening his lachrymal bones, on account of old traditions upset—then with his lumbar vertebrae rattling wildly as he laughs over new improvements and ludicrous incidents, Uncle Dooley divulges the following account, diurnally kept, of the happenings and mishaps of the year just past.

SEPTEMBER 18.—Varied new carcasses and physiques, endowed with multiform physiognomies begin to infest these sacred walks. "Goat" Bush displays his new summer regalia.

SEPTEMBER 19.—Dr. Jimmie Cate Hinton begins to tramp around with his ubiquitous suit-case, while Doc Jack commences to bespatter the atmosphere with such colloquialisms as "the dickens" and "how in the mischief."

SEPTEMBER 20.—Freshmen start feeling at home. Make many acquaintances among the sophomores. Some few criticize the reception offered. On this day it is announced that Stewart has resigned from the firm of McCord-Stewart and that Jeff would manage its interests for an acorn or two.

SEPTEMBER 21.—Dude puts out the S. R. O. sign in front of Greek Lit. classroom. Much disappointment registered among honor roll aspirants.

SEPTEMBER 23.—Sub. makes a few remarks in chapel that win for him the everlasting allegiance of the freshmen. Talbot grows mutinous.

SEPTEMBER 24.—Lit. Passmore appears at Sunday-school. Can't decide whether to put a "blue" or a "red" in collection.

SEPTEMBER 26.—Billups declares his high pedigree and indoubtable courage to a cluster of awe-stricken sophs. Strick doubts it.

SEPTEMBER 28.—Necessity demands re-organization of the Fish Club. Ernest Baker elected president, with Louie Husbands as his correspondingly Fishy Secretary.

SEPTEMBER 30.—Hi Lowe introduces the newest thing in whistling—mouths on the bias.

OCTOBER 3.—Freshmen express slight annoyance at the nocturnal prowling of the sophs. Cook Smith moved that the senior class buy chocolate milks for the freshmen. Later amends his motion to read "soothing syrup."

OCTOBER 5.—Doc, Dickey tells how easy it is to get in Louisville.

OCTOBER 8.—Strick vows everlasting loyalty to his Alma Mater and Sub Talbot grows sentimental.

OCTOBER 10.—Paul Warwick reports one church, and Tommie Morgan goes off into rhapsodical hysterics.

OCTOBER 12.—Strickland, asleep, is heard to mutter, "I dearly love old Emory, the environments thereof are beautiful." Sub. Talbot composes a multiplicity of odes and sonnets.

OCTOBER 14.—Lit. Passmore and Rocher go on a tear, shoot up Cov. and take Oxford apart to see what makes it tick.





Emory Campus



OCTOBER 15.—Cade and the Phi goat go to Sunday-school. Madame wins a lifetime friend.

OCTOBER 20.—Jesse and Barber qualify for the Red Cross or Ambulance Corps—Jesse given his choice.

OCTOBER 27.—Senator Holt and Humphries lock up—accidentally—on Wicker Field. Both apologize obsequiously and Muttis uses his umbrella.

OCTOBER 30.—Gladys Langston blushes as he sees the campus stripped of its trees.

NOVEMBER 1.—Bramwell Kerr wants to know if the French government regulates the birth-rate. Sub. scandalized.

NOVEMBER 4.—Excuse Committee runs amuck, and avows to be stern hereafter. Dude considers tendering his resignation, because he loses valuable Greek Lit. time.

NOVEMBER 7.—Dude cuts the department of his Greek Lit. class. Pafford and Tallot establish their innocence.

NOVEMBER 11.—After long deliberation, Wicker moves that the freshmen make the seniors wear derbies.

NOVEMBER 13.—Kic Stenberg gets box from home, and has same confiscated by "A" section. Baker chases Limberger cheese with Bologna sausage.

NOVEMBER 18.—Annual Hegira to Athens. Jack teaches Muttis and Hinton to blow beautiful smoke rings. Suggests that they split a package of Camels, and is taken up.

NOVEMBER 21.—Sub. calls out the names of Cade and Weddington for playing truant. Weddington heard singing, "Glawry, Glawry, etc."

NOVEMBER 24.—Galloway Boland asks Gee the price of a Turkish bath. Wilson is indignant, but hates to admit it and compromise.

NOVEMBER 27.—All of Barber Rawlins' loyal patrons come to the definite conclusion that the assistant is more qualified for a butcher than a tenorial artist. Hacked visages much in evidence.

DECEMBER 1.—Bush gets a check from home and blows himself to a hair-cut. Student body holds jubilation meeting in front of the Arcade.

DECEMBER 3.—Fritz shows signs of nervous prostration. Inability to make Doc Garland affix his signature found to be the cause.

DECEMBER 5.—Doc Jack completes his "brothering" of the entire government class, and starts again at the head of the roll. Doc Garland can't understand how he does it.

DECEMBER 7.—Big Lee expresses a deep regret at not having gone out for football. Calculates he could have done as well as Glen Summer.

DECEMBER 12.—Prelims begin to give dark forebodings of that which is to come. Paul Warwick celebrated because he has only seven.

DECEMBER 15.—Great perturbation in "A" section because all the officers engage in a rough-house. Freshmen begin to understand why the irony of fate is anthematized.

DECEMBER 21.—Everybody starts checking out for home. Freshmen dream of Kris Kringle rather than study for exams. Tide of bull chills when Floy departs.





Emory Campus

1917



DECEMBER 22.—Last remnants depart. Stone brothers do a rushing business. Ethiopian population is more servile than ever in the history of Oxford.

JANUARY 1.—Great influx of sharks and hood-licks. Madam inquires about many appellations. Doesn't recognize any seniors.

JANUARY 2.—Bigham Smith and Hamp Flowers arrive and announce that they have joined the Yiddish Club during the holidays. Doc Ward grows morbid.

JANUARY 6.—Fritz Lane announces that he has a complete stock of gilt-edged ideas that he will condescend to sell to the right person. McNatt tries to put him out.

JANUARY 8.—Basketball season opens and the ladies rave over the form freely shown by Bramwell Kerr and Howard Weems. Freshmen start on their only claim to big-head.

JANUARY 10.—Nag introduces a new series of contortions for gym. Especial stress is laid on aesthetic solo-dances, in which gyrations dumb-bells are used as kerchiefs. Doc Garland becomes proficient and occupies the rostrum.

JANUARY 11.—Seniors begin to notice a slight carelessness on the part of Doc Dempsey, and attendance on Bible IV drops off considerably.

JANUARY 13.—Ernie Baker grows slushy and begins to call his room-mate, "My Wild Irish Rose."

JANUARY 16.—Ernest Rogers breaks up dinner at the Stewart House with a violent attack of his muffled trip-hammer laugh. Big Lee becomes agitated and precipitates a pitcher of long sweetening on the table cloth. Miss Salbe speaks without impediment.

JANUARY 18.—Sub can't make his eyes behave in Economics I. He wonders if Barrier is talking with a definite motive, or if he merely likes to hear himself talk.

JANUARY 19.—Sub catches Walter Stephenson and Hamilton holding hands in class. Both blush guiltily and try to bridle their affections. Sub is tickled immensely, but can't decide which was holding the other's hand.

JANUARY 22.—Bigham Smith, Wallace Bazmore, and Bill Askew buy a Pegasus they can't use and sell it for a dollar profit. Wallace prays forgiveness for swindling an innocent son of Ham.

JANUARY 25.—Wallace appears on the campus wearing an extraordinarily happy smile. Seems to possess some delightful secret.

FEBRUARY 3.—Seniors make their exodus to Atlanta. Banquet a great success, but Big Lee avows that he prefers hen-eggs to caviar. Doc Dickey gets "Hints on Fork-Discrimination" from the head waiter.

FEBRUARY 4.—Three highly respectable seniors saw a waste basket jump out of a Wincoff window. Warwick and Lane can't see how it could be true, but yet—

FEBRUARY 7.—Big 'un returns late, having missed three classes, one chapel and a church. Wonders if he is shipped.

FEBRUARY 9.—Several friendly mix-ups in the Dorm. Stumpy Pearce requests a cessation so his young charges may get their full quota of relaxation in the embrace of Morpheus.





Emory Campus

1917



FEBRUARY 15.—Freshman Baldwin modestly asserts to about sixty of his bosom confidants that he knows practically as much Chemistry as does George Pinckney.

FEBRUARY 17.—Jack Allen mixes a tie vote in Chemistry with the phraseology of African castanets. "Thirteen by two, Professor."

FEBRUARY 22.—Faculty tramples tradition and gives holiday. Brennan girls sweep down on our multitude of skeptical, susceptible, and gullible ones, and make their conquests accordingly.

FEBRUARY 24.—Three C. O. D. packages taken out of the Post Office. Mr. Byrd wires the postmaster general and Mrs. Branham uses smelling salts.

FEBRUARY 26.—Relay race on Weber Field. Seniors present interesting array. Bazemore presents new idea in trouser trimming.

MARCH 1.—Post Office sounds like an aviary when various exponents of the credit system receive their report from D. T.

MARCH 3.—Sub appears with a knife-like edge on his trousers, and daintily flicks a fleck of chalk from his sleeve. "—the mice will play."

MARCH 6.—Temporary exam. schedule posted, and Dule worries because there is a certain air of indefiniteness about that is not precisely satisfactory.

MARCH 9.—The great god Interrogatus reigns supreme for the second time this year. Various cries of terror heard from Analyst and Calculus strongholds.

MARCH 17.—Exams. over, and baseball begins to win the applause of the rabble. Display of suits by the freshmen looks like a Texas State High School Meet.

MARCH 19.—Spring term starts and many sad-eyed seniors begin to suffer from insomnia. Back work coaches in great demand.

MARCH 24.—The foul stench of politics begins to be wafted nearer by the breezes of bull let loose by the Ancient and Putrid Order of Taurus Tossers. Dopes popular as chasers.

MARCH 31.—The libelous, contumely heaping Whompus makes its jaundiced appearance.

APRIL 1.—Madam puts new lock on his stable, and surrounds the Piedmont with barbed wire entanglements. Con Dyal guards the mansion.

APRIL 14.—New members initiated into Never Again Club. Politicians chuck up and see how much they have squandered on gullet dampeners.

APRIL 19.—Doc Dickey begins to assiduously apply himself to Mechanics, and McNatt bones nightly on Greek.

MAY 30.—Seniors complain of loss of sleep, and wonder if there is any significance in dreams.

MAY 15.—Several seniors wish they had never intrusted Ceph with these ten shining plunks for a dip. fee.

MAY 30.—Final inquisition begins. Stimulants and late hours much in vogue.

JUNE 5.—Burdens begin to be lifted, and Lee Brothers sell ties to match diplomas.

JUNE 13.—The sheep-skin laurels are delivered, and the Excuse Committee weeps crocodile tears because their favorite patrons will nevertheless enter their chamber of horrors to hear the sickening thump of the "Rejected" stamp





The Fugitive

By W. ROBERT REED.

ON the crest of the mountain he paused. Once he glanced behind, furtively, ashamed to acknowledge his fear of pursuit. A breath of wind flapped the limp collar torn back from his throat; cooled his sweaty frame. Sprinting at the sun he decided it might be three o'clock—the afternoon half gone, and only five miles covered from the Madison jail. Dodging, hurrying when possible, always listening—it has been far from easy. With a last glance at the western hills, he broke through an undergrowth thicker and, hanging over tumbling stones and through bushes of matted laurel, was again on his way.

Before dusk a snake crossed his path. Antagonistic, the black, slick moccasin coiled before him, shooting forth its forked tongue. He cast a stone that it might uncoil, grasped its twisting tail in his great hand and snapped the long, wriggling body as a coachman might pop a whip.

Then, fear lending speed to his tired feet, he hurried on.

Blackness descended, shrouding him in impenetrable gloom; pines whispered in the night-breeze, making the cool, death-quiet seem more still. A whippoorwill broke forth raspingly, cutting the silence with its high, insistent call; in the distance an owl mournfully hooted that an answer might echo from the valley far below.

The man halted for a time at a familiar spring where he drank deep and long. Suddenly his great body was very cold. Across the stream, a lighted window silhouetted a stubby pine and its flickering rays played with the shadows. Plunging over wet leaves and long-decayed bark, he went toward the cabin to seek shelter for the night.

A girl—yellow-haired, lithe as an antelope—pulled back the door that he might enter. She laughed breathlessly, her voice catching as she spoke.

"I didn't know you."

"Where's Shelton?"

"Pop's gone to Madison." She stepped back into the white-washed, stone-hearthed room. "Ma's here. Come in."

He went across to the fire of pine-knots and dying logs where a woman, gray-haired and old before her time, sat close in the flickering light. Her hands gripped a circle of half finished rug; her lap, he noticed, was heaped with rags.

For a long time she stared at him in the grim silence of debate and judgment. The girl moved quickly between cupboard and oil-clothed table, laying out cold food for the man who had come so far.

"How did you get out of jail?"

Sitting forward on a low cane chair, hairy arms flung toward the blaze, he stared in the heart of the fire. He did not raise his eyes.

"When they brought food at noon, I got away."

The girl halted at the table.

"Shad Silver," she broke in, "you didn't—kill a man?"





Emory Campus 1917



"That's what I was jailed for," he fired bitterly. "What difference'd it make if I lived one more?" He glanced toward Hetty Shelton who, face unmoved, was again fingering her strips of cloth. "But I didn't kill this one. He'll live—perhaps his men are beating the mountains for me even now!"

Once at the table, food—the first he had had since sunrise—blessured his erst-while quiet tongue. He ate cold bacon and corn pean ravenously, like a lean and long-starved dog; and as he ate, he talked.

He had freed himself after nine months, waiting behind bars at the county jail. Fegging sickness, he had duped the jailor into his cell; and there, when the man leaned over him, he had grabbed him at the throat and choked him. All this he told—the silence of his listeners lending inspiration to his tongue. It had not been easy, even then. After tying a sheet about the jailor he had watched his chance to get away.

Seated across the table, hands folded in her lap, the girl watched his lips that she might catch every word.

"Casually—" he pushed back from the table; rose to his feet. "when have you seen my wife?"

"Two weeks ago.

"And the kid?"

She smiled. "He's got on little britches," she announced, informingly. "Mattie thinks he's some boy!"

He nodded.

"Mattie's been to the jail," he told her. "She's come off and on ever since I've been shut up there."

The old woman stopped her work.

"Who'd drive her in?" she asked shortly. "Mack?"

"Mack's brought her of late," he answered. "He's been mighty fine—Mack has! Mattie said he'd helped her when she needed advice about our patch o' ground."

Hetty stirred the coals.

"You can sleep in the room back there," she grunted at last, motioning stiffly over her shoulder. "What air you going to do tomorrow?"

Without fear of betrayal he talked of his plans.

"At daybreak I'm going to start," he told them. "I'll get across the gap, and hide till dark. Then I can go down the slope to my own cabin."

"You'll not try hidin' there!" The keen old eyes shot flamepoints toward his face.

"No." He shook his head. "We'll go to my brother's. And as soon as it's safe, we'll jump the state—and somewhere, Mattie and I can start to live again."

"They wouldn't 'o' hanged you," grunted the woman. "Maybe you'd better have staved and had your trial."

"If they hadn't hanged me," he shot back fiercely, "it would have blacked up Mattie's name. Either I was guilty of murder or she was guilty of seeing the man I killed! I shot *him* on account of what he *said*. And nobody but me an' God knows what he said!"





Emory Campus 1917



Breathless, her yellow hair glowing in the firelight as copper flashes before the sun, Camilla sat and listened. Her soul thrilled at Silver's words, yet her rounded lips did not part to speak. Her eyes turned once to stare long into the fire.

In the low-ceiled bed-room that had been allotted him for the night, Silver draped a thick red bedquilt across the one window that the room boasted.

It was later—the candle had burned a fraction down—when, from without, the door was pushed gently open, and into the room slipped the girl. Closing the door, she leaned against it, her hands, palms out, flung wide along the frame. Her dress, unbuttoned, had parted, leaving her white throat bare; her corn-colored hair hung about her shoulders.

Silver heard her low, uneven laugh—carrying in its mellow sweetness the breath of the hills, the call of a summer quail.

"I thought I'd tell you," she murmured at last, "if they come here for you tonight, I'll give them coffee, and talk to them, and try to turn them back in the other direction." Obviously it was not what she had come to say.

Once did he glance at her supple figure, head to toe, back again; and then he looked away.

"Don't come out," she went on, more hurriedly than before, "even if you hear voices." She drew in her breath with one hand clasp the knob. "I don't reckon I'll see you again—if you—and Mattie—get away." Had Silver been other than Silver he would not have stood man of iron by the little walnut bed, watching the figure that swayed heavily against the door. Perhaps his hands closed and a shiver twinged his naked arms, but he did not go to her.

"Good-bye," she said.

For a long time he stared at the huge black door which had closed her out, at the knob which she had held, at the floor where her bare feet had stood. She seemed to be there still, lips parted in a smile. He moved forward, would have started toward the door, and the vision faded.

For a moment he waited. Then, in the vacuum-like stillness, he blew out the candle.

At dawn he stole away.

Back in the shelter of undergrowth and twisted laurels, he slipped stealthily over the carpet of green, dark moss; now listening—waiting—speeding toward the gap.

By three o'clock he had reached the shelter which he sought. Here, buried in a hedge of laurel, he lay hidden till nightfall. Once, when three men passed by, a bear bound sniffling at their heels, he had quaked within himself; but the dog turned not once from the path. The men had been drinking; that was plain from their talk and their multisonous laughter. One of the three even mentioned the name of Mattie Silver. Shad writhed, as must a man bound and tortured.

At sunset he crept from the bushes.

His ground, at a glance, looked to have been well filled. From one window of the cabin light trickled out into the shadows. Chickens fed, supper over, the boy asleep, perhaps Mattie was sewing; maybe she was washing pots and dishes. For





Emory Campus

1917



Mattie—and the boy—love seemed to fill his soul. He crept nearer to the lighted window.

Listening for a moment, he was afraid his own dog might not recognize him. But there was not a pat of frisking feet on the earth, nor was there a bark of welcome. Evidently the dog was no more.

Hugging the logs, moving closer to the window, he first heard voices within the room. Mattie was speaking; then a man took up the conversation. Slow, monotonous was their talk, as if they found no cause to hurry. Clinging to the wall for a moment Silver listened, and then his face went gray.

The man inside was laughing.

Tightly gripping the ledge of the window, Silver, eager and yet afraid of what he might behold, stared once through the checkered panes. And even as he gazed into the room Mattie saw his face, not clearly but shadowed through the glass that had steamed under his breath.

She shivered, her eyes closed, and she clutched the arms of the man beside her. This Silver saw. Then he dropped from view. He realized that she believed him to be thin air, a vision, a picture formed on the retina of her eye!

The man—it was Mack—was comforting Mattie, who clung to him, sobbing as if her soul were tortured.

Shad Silver swayed nearer to the house; his eyes, in the darkness, turned heavenward. (There are times when we live a lifetime in a moment—within the next minute is a lifetime to be lived). His lips moved continuously, opened, closed; but not with prayer. His great hands were stiff, a trifle cold.

How long he listened he did not know. The vision of Camilla Shelton—the girl who loved him with all the depths of her shallow soul, had left his brain, perhaps was never there. Once before in his life he had been tempted to kill—he started toward the front of the little house, fingers hugging his palms. But if he killed—what then? He swayed a moment, halted—for in the volcano of his thoughts had formed the question: Who was the offender? A breath stopped in his throat, choking him. His hands gripped his bosom, rose toward his twisted face.

Something like a sob shook his powerful frame as he leaped, for a moment, against the logs of his own cottage. Then, with the cut of lightning, he flew from the place—sped as though pursued by devils.

In the dining-room of the Madison Inn sat Judge Berry. Opposite him—his wife.

For the once her placid face was ruffled. Frequently would she glance up from her food, staring as though puzzled at the countenance of her husband. At last she broke the stillness.

"Henry," she began, then stopped to stir industriously her cup of dark-brown tea. "Henry—" she gathered courage. "you've been worrying a lot lately. You might talk it over with me. Was it on account of the man Silver's—getting away?"

He waited a long time, then spoke.

"No," he stated heavily, "it's not because Silver got away. If he had been





Emory Campus

1917



caught—brought back—I wouldn't think about him twice. He had a chance—a jolly chance—to skip the state." He looked her straight in the eyes. "Martha—" his voice rose protestingly—"that man beat his way twelve miles across the mountains—to give himself up to the law!"

Mrs. Berry raised her brows. But, after all, the man was a murderer.

"Was that all?" she begged at last. "Or did he—say something—to you?"

The judge stared at his wife a long while; she decided he had not heard her question. Sometimes his mind did wander quite far away. Of course he had a great mind—but that did not make him companionable. She frequently wished he had been like other men.

"Yes," he spoke at last, as though she had just asked a question, "that's the trouble. He stopped me—laid his hand on my arm; and I've never looked into such eyes in my life before! Fire-shot—mad—but as hopeless as Dives in hell!"

The little woman moved expectantly. Her tea grew cold as she hung on her husband's words.

"And he said to me—" the old man sighed. "He said: 'Governor, I don't want to die. But—for God's sake make my sentence long!'"

Modern Romance

A COMEDY IN FIVE ACTS

ACT 1.

"Glad to meet you."

ACT 2.

"How about Thursday night?"

ACT 3.

"Do you think Papa would object?"

"I think not."

SMACK!

ACT 4.

"I will."

ACT 5.

"Come to papa!"

Curtain.

—W. E. R.





Emory Campus

1917



Dreams that Mothers Know

BY FLAM FRANKLIN DEMPSEY, D. D.

On the walls are leaping shadows
From the warm grates pensive glow,
And the lights and shadows struggle,
And with fancy come and go.

Hark! I hear a gentle footstep,
Mother crowning sweet and low—
Now she bends above the cradle,
Dreaming dreams that mothers know.

That her boy shall grow to greatness,
Temper rugged strength with love—
Wisdom of the serpent mingle
With the meekness of the dove.

Vanished then the narrow borders,
High horizon of the hills,
Widen they for stalwart manhood,
While God's purpose through him thrills.

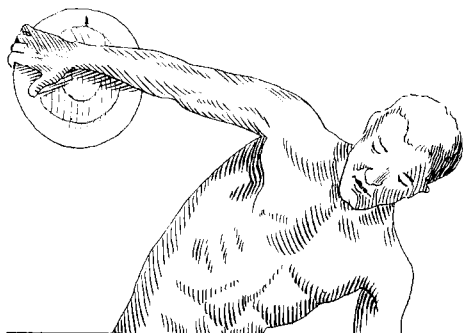
Farther view and loftier vision
Brought him to a nobler height,
Saw the gray world all transfigured,
Clothed in majesty of light.

And the transport of that vision
Rests upon his features yet,
In his heart God's purpose lingers,
In his life its seal to set.

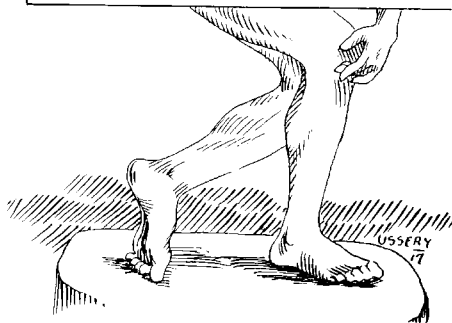




Emory Campus
1917



ATHLETICS





Emory Campus

1917



Wearers of the "E"

FOOTBALL

BABER
EVLINGS
BUTLER
CHRISTIAN
DICKY

ENGLISH
GIBSON
JONES
LESTER
MCKINPUS

RICHTER
SHAW
SUMNER
WEEMS

BASKETBALL

BUTLER
DICKY
LESTER

RICHTER
SHAW
WARREN

WATKINS
WELLSINGTON
WEEMS

BASEBALL

DICKY
HARRIS

INGRAM
KERR
LANE

ROGERS
ROSE

TRACK

HOLAND, F. C.

BUTLER

GYMNASTIC

HOLAND, F. C.

MCKINPUS

O. Q. MELTON ATHLETIC MEDAL

DICKY





Emory Campus

1917



All-Emory Football Team

SENIOR PENNANT WINNERS



BARRIER -

W. P. BARRIER, '19, WELLINGTON, TENN., Backfield. A big man, speedy for his size, a good tackler, and a man whose presence is felt on the team.



BUTLER -

D. C. BUTLER, '19, COVINGTON, GA., Backfield. "Dave" is the man with the omnipresent smile. A cool, heady player; quick to find the faults in his opponents' line—but slow to find fault with his teammates.



CHRISTIAN -

F. W. CHRISTIAN, '17, NEWNAN, GA., Backfield. A man who has been in college four years and has annexed an "E" for every year. His team depends on him and he always delivers the goods.





Emory Campus

1917



DICKY - '17

N. F. DICKY, '17, LOUISVILLE, KY., Backfield. Though on the team but one year he has made a reputation as one of the best football players in college—and he deserves it.



ENGLISH - '17

J. C. ENGLISH, '17, ALVA, FLA., Line. He has made the team for three years and has always worked for it. What he got was pre-eminently on merit.



JONES - '19

J. S. JONES, '19, Dawson, GA., Line. There is no better defensive player in our ranks. A sure tackler; he greatly raises the efficiency of his team.





Emory Campus

1917



J. G. LESTER, '18, COVINGTON, GA., Backfield.
This is the first time Jim has gone into football with
the full impetus of his determination and he had no
difficulty in getting his "E."



LESTER '18

R. S. MUCKINFUSS, '19, ATLANTA, GA., Line.
You'd never take him for a football player unless you
saw him play—but take our word for it that he cer-
tainly goes to it with a vengeance.



MUCKINFUSS '19

A. H. RICHTER, '20, SAVANNAH, GA., Backfield.
"Richt" was the only freshman to make his "E"
but even at that the freshies are well represented.
Speed and nerve make him a valuable man.



RICHTER '20





Emory Campus

1917



SHAW

J. B. SHAW, '17, MADISON, GA., Line. "Bud" is one of the most consistent performers we have seen. With a determination never failing his end is scarcely over the point where gains are made.



SUMNER

R. G. SUMNER, '17, ST. PETERSBURG, FLA., Line. Sumner made his place absolutely on merit. He got his place through the great amount of pep and nerve he put into every game.



WEEMS

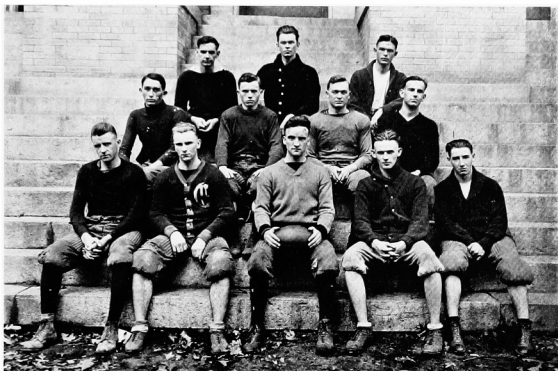
H. V. WEEMS, '17, ROME, GA., Backfield, Howard is a bulwark of offensive strength. We always feel for the man who is so indiscreet as to tackle him.





Emory Campus

1917



Senior Football Team

Pennant Winners

First Row—SHAW, WEEMS, CHRISTIAN, *Captain*; WARWICK, McNATT.

Second Row—ELIZER, PAFFORD, MURRAY, McCORD.

Third Row—ENGLISH, SUMNER, DICKEY.

Not in picture: ROSE





Emory Campus
1917



Junior Football Team

First Row—INGRAM, KEER, CLEMENTS, MALONE, HUCKABEE.

Second Row—LESTER, HUSBANDS, DARLING, TARPLEY, DICKEY.

Third Row—HAMILTON SMITH, *Captain*; PROFESSOR SHINGLER, *Couch*; CRITTENDEN, BIVINGS.





Emory Campus
1917



Sophomore Football Team

First Row—GIRARDEAU, BLAIR, BIVINGS, *Captain*: WALKER.

Second Row—BUTLER, JONES, THOMPSON, MUCKINFUSS, BARRIER, MELTON POWELL, Mc'ORD.

Third Row—CANTRELL, MISS CONEY, MISS SAUNDERS, *Sponsors*: PROF. PEEBLES, *Coach*:

WILSON, HORALE.





Emory Campus

1917



Freshman Football Team

First Row—WHITE, MAYO, SMITH, DICKEY, POPE, STANCL, PURKS.

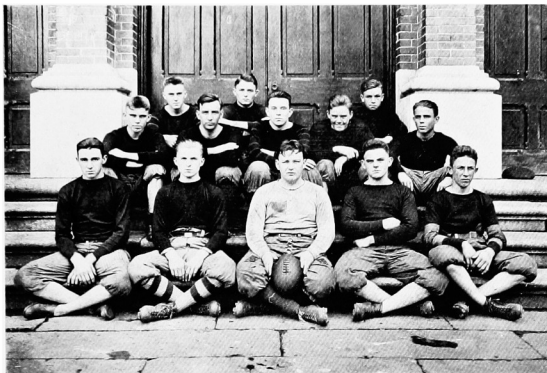
Second Row—HARMON, PILCHER, *Captain*; O'QUINN, BIRD, RICHTER.

Third Row—JONES, STEINBERG, WATKINS, HOWELL.





Emory Campus 1917



Academy Football Team

First Row—BROWN, R., DARLEY, EMMET, RICE, ROGERS.

Second Row—WALDROP, FOSTER, PEELER, ANSLEY, WALKER.

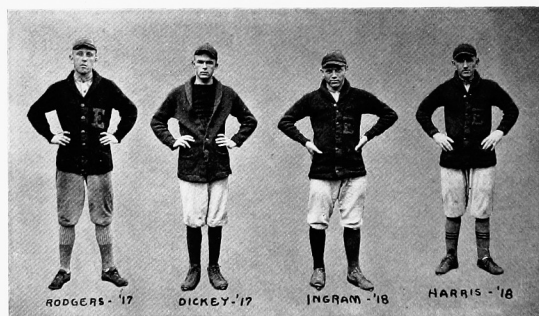
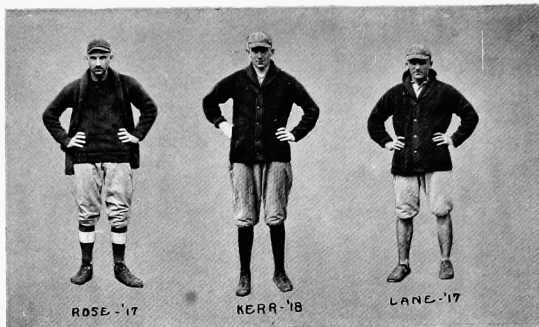
Third Row—JOHNSON, TAYLOR, LYONS.





Emory Campus

1917





Emory Campus

1917



Senior Baseball Team

Top Row—SHAW, PAPPARD, MCCOED, ROSE, LANE, GARLAND

Bottom Row—BRAY, McNATT, Manager; WARWICK, Captain; DICKEY

Not in picture: ROGERS





Emory Campus 1917



Junior Baseball Team

Top Row—HEARN, BACON, PROFESSOR FEEBLES, *Coach*; KERR, HAMILTON

Bottom Row—ALLEN, WHITE, HARRIS, *Captain*; INGRAM, LESTER, *Manager*

Not in picture: SMITH, W. E.





Emory Campus

1917



Sophomore Baseball Team

Top Row—GIRADEAU, BIVINGS, HUMPHREY, GRAHAM, *Captain*; SSELLING, McVORD, HOSALE

Bottom Row—PIPKIN, WILKINS, PEARSON, BOSTWICK, *Manager*; MATHEWS

Not in picture: FELTON





Emory Campus

1917



Freshman Baseball Team

Top Row—GREEN, Manager; O'QUINN, MATTOX, HARMON, Captain; PEMBERTON, ROGERS.

HICKS, PROFESSOR WHITE, Coach

Second Row—ALLEN, BELL, WARREN, JONES, HARRISON

Not in picture: HEAD, PILCHER, STEINBURG





Emory Campus 1917



Academy Baseball Team

Top Row—DAVIS, FOSTER, *Captain*; FRASER, JOHNSON, ANSLEY, LYONS, PEELER

Bottom Row—DARLEY, FLOURNOY, TURNER, WALKER, *Manager*; ROGERS





Emory Campus

1917



WEEMS



RICHTER



DICKEY



SHAW



WATKINS '20



WEDDINGTON '19



WARREN '20



BUTLER '19

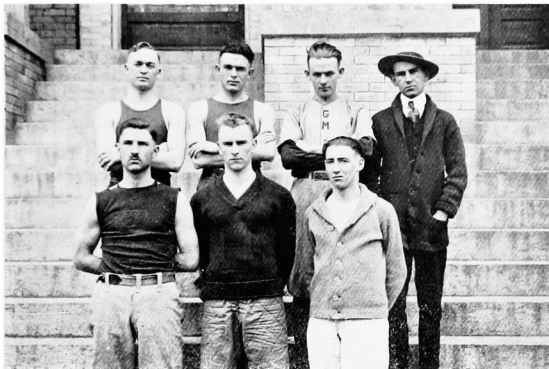


LESTER '18





Emory Campus 1917



Senior Basket-ball Team

First Row—ROSE, WEEMS, McNATT.

Second Row—MURRAY, DICKEY, Captain; WARWICK, McFORD, Manager.





Emory Campus

1917



Junior Basket-ball Team

KERR, SMITH, HAMILTON, LESTER, *Captain*; BOLAND





Emory Campus
1917



Sophomore Basket-ball Team

First Row—WEDDINGTON, BUTLER, *Captain*; HUMPHREY.

Second Row—MULLINS, MONTFORT, STUBBS, MELTON.





Emory Campus 1917



Freshman Basket-ball Team

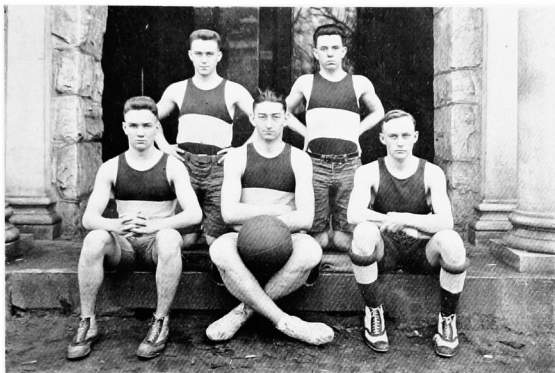
First Row—WATKINS, RICHTER, WARREN, *Captain*: HARMON, FLOWERS.

Second Row—SANDERS, POPE, MAYO, ALLEN.





Emory Campus
1917



Academy Basket-ball Team

Sitting—FLOCKNOY, DAVIS, Captain; BROADNAX.

Standing—JOHNSON, FEELE.





Emory Campus



All-Emory Track Team



BOLAND, P.C.



BUTLER

P. C. BOLAND, '18, OXFORD, GA., Track. At the state track meet Fay made all the men running the mile take notice of "the gentleman from Oxford." We predict him a good bit of success this spring.

D. C. BUTLER, '19, COVINGTON, GA., Track. "Dave" is one of the fastest men in these parts and with his natural pep he should greatly mould the history of Emory on the track.

All-Emory Gymnasium



BOLAND, C.G.



MUCKENFUSS

C. G. BOLAND, '19, OXFORD, GA., Gym. He is a man who has so co-ordinated mind and muscle as to do feats bordering on the impossible.

R. S. MUCKENFUSS, '19, ATLANTA, GA., Gym. Ralph is of the first order when it comes to the accomplishment of great feats on the horizontal bar. He is always cool, and that is the thing that counts in gymnastics.





Emory Campus 1917



Senior Relay Team

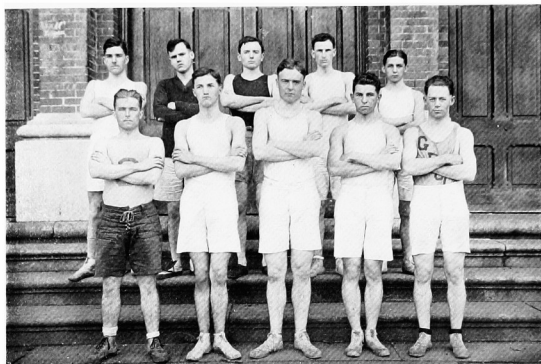
MURRAY, WEEMS, BRAY, PAFFORD, LIM, BAZEMORE, McCORD, WARWICK, LEE, ELIZEK, ROSE.





Emory Campus

1917



Freshman Relay Team

First Row—RICHTER, DUNCAN, WHITE, POPE, ALLEN.

Second Row—SMITH, WATKINS, *Captain*; MACKAY, GREEN, COOK.





Emory Campus

1917



Junior Relay Team

First Row—PEARSON, HOUTS, BOLAND, Captain: TARPLEY, DICKEY, ALLEN.

Second Row—RAGSDALE, BILLUPS, KERR, WHITE, HAMILTON, HULSEY, RAST.





Emory Campus

1917



Track Team

First Row—BOLAND, C. G., BOLAND, F. C.; RICHTER, WARWICK, WITKINS, ALLEN, *Asst. Mgr.*

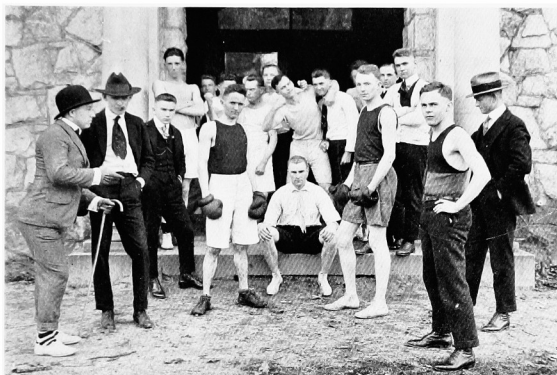
Second Row—KERR, WEEMS, *Manager*; GARLAND, MELTON, BIVINGS.





Emory Campus

1917



"BULL WEIGHTS"

"HUN" DUNAWAY
 "POP" WEEMS
 "ALWAYS HURT" MELTON

"MIDDLE WEIGHTS"

"WILD CAT" WATKINS
 "MOSE" MOSLEY
 "DOLLY" DARLY

"LIGHT WEIGHTS"

"RIP" BLAIR
 "BONEHEAD" BOLAND
 "DICK" DICKEY
 "PUSS" POWELL

"WIND WEIGHTS"

"LONG DISTANCE" KERR

"DOC" WHITE

(Not in picture)

Lists: } COBB { Imaginary Wights
 } WIGHT {

JOHN D. BAZEMORE, Promoter

"JACK ALLEN

"PERCY BRAY"

Trainers:

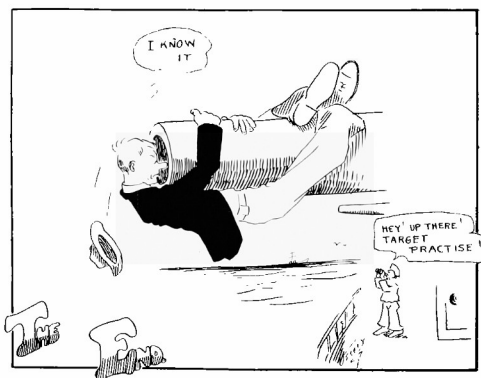
"CUB" WARWICK, Press Agent





Emory Campus

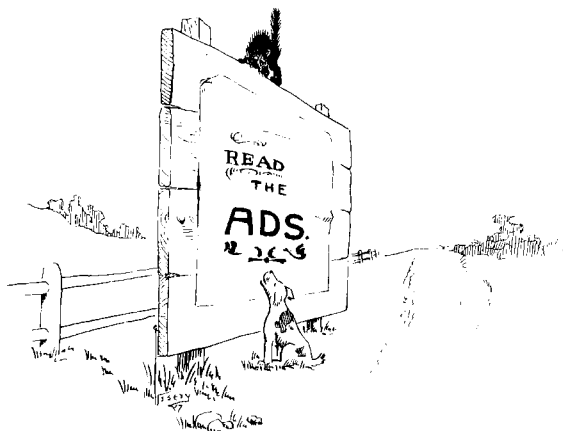
1917





Emory Campus

1917



*The Best in
Flowers for
Every Occasion*



*Fresh from
Our Large
Greenhouses Daily*

Kuhns, Collegiate Photographer

331½ WHITEHALL STREET, ATLANTA, GEORGIA

Picture Committees are invited to get our prices and see our work

All cuts of the Theological Department in this Annual, of individuals,
designs and groups were made from our Photographs

*See our Classy Designs for Clubs, Frat. Groups and Class Groups
Our facilities for Designs and getting out large orders are unsurpassed*

W. T. KUHNS

Student Trade Appreciated

Cigars, Tobacco, Stationery, Soft Drinks, Fruits, etc.

F. A. HENDERSON

The Arcade Restaurant

The Best and Cleanest of Food Combined with Ever Courteous Service
Makes the Arcade an Ideal
Place to Eat

It Five Points - Day and Night Service

38 PEACHTREE STREET

ATLANTA, GEORGIA

The Stewart House

A high-grade house for
Emory Students

Table Board a Specialty
Rooms with Private Bath

MISS EMMIE STEWART

OXFORD, GEORGIA

READY—WAITING

Your copy of our 1917 BLUE BOOK,
which illustrates the best in

FRATERNITY JEWELRY *and* NOVELTIES

THE D. L. AULD CO.

MANUFACTURING JEWELERS

COLUMBUS, OHIO

Wilson Novelty Co.

School Supplies, Novelty Goods

Fine Stationery, Magazines

Picture Framing a Specialty

Washington Bldg. 202 Monticello St.
Covington, Ga.

JOSEPH SIEGEL

EXPERT WATCH REPAIRING

All Work Absolutely Guaranteed

COVINGTON, GEORGIA

At Dr. Wright's Drug Store

BOLAND BROTHERS

OXFORD, GEORGIA

High-Class Printing

Class and Letterhead Stationery
a Specialty

STUDENTS' RATES

The Johnson House

High-Class Rooms and Board

Especially Good Table Board
for College Boys

Reasonable Rates

MRS. J. Z. JOHNSON, *Manager*

OXFORD, GEORGIA

YOURS TO SERVE YOU

W. W. St. JOHN

JEWELRY *and*
STATIONERY

High-Class Watch Repairing
COVINGTON, GA.

THE ARCADE

OXFORD, GEORGIA

Headquarters for Up-to-Date

COLLEGE FURNISHINGS, PENNANTS and SOFA PILLOW COVERS
STATIONERY

A full line of Haberdashery

Agent

STORRS-SCHAEFER COMPANY
CINCINNATI, OHIO

UNITED AMERICAN TAILORS
CHICAGO, ILLINOIS

STUDENT'S BARBER SHOP

J. E. RAWLINS, *Proprietor*

Up-to-date Equipment for College Boys

Tickets worth \$1.25 for \$1.00

HOTEL LANIER

MACON, GEORGIA

A modern hotel with all the modern conveniences

Emory Boys Always Welcome

American and European Plan

White Barber Shop

W. J. GOBER, *Proprietor*

COVINGTON'S BEST TONSORIAL ESTABLISHMENT

Our Equipment and Workmanship second to none

BATHS: Hot, Cold, Tub or Shower

What it takes to make you look sweet, we've got it

PATRONAGE OF STUDENTS SOLICITED
AND APPRECIATED

WE'RE ON THE SQUARE

COVINGTON, GEORGIA

COLLEGE MEN IN BUSINESS

Earn \$1,500 to \$2,500 a Year

One-half the college graduates at the present time enter business. And why? The new civilization, the enormous commercial development of our country has made Business King.

PRESIDENT WILSON RECENTLY SAID:

"The question is, what part is the university going to play in preparing men for commerce? It is not going to teach them the mechanical details and methods of business. The business of the university is to teach the head and not the hand."

ATTEND BAGWELL BUSINESS COLLEGE

The college man who wishes to fit himself at the least expense to get a start in business cannot do better than to invest several weeks at a small cost in acquiring a mastery of stenography and typewriting. These accomplishments will enable him to obtain a position that will pay from \$1,500 to \$2,500 a year.

CHARTIER SHORTHAND

Taught exclusively in Georgia at Bagwell Business College, Atlanta, has made it possible for shorthand to be learned in half the time required for the old Pitmanic systems. Some of the best in the South are Bagwell graduates.

We would be glad to confer with any who may be interested.

Address

BAGWELL BUSINESS COLLEGE

34 LUCKIE STREET

ATLANTA, GEORGIA

EMORY UNIVERSITY

*The University Offers to Present Courses Leading to Degrees
in the Following Departments:*

I. THE SCHOOL OF LIBERAL ARTS

(Emory College)

Offers courses in English, Spanish, French, German, Greek, Latin, Mathematics, Physics, Chemistry, Biology, Mental and Moral Science, History, Political Economy, and Biblical Literature, leading to the usual literary degrees. This department has a library of 40,000 bound volumes.

II. THE SCHOOL OF THEOLOGY

(The Candler School of Theology)

Offers full and varied courses leading to the degree of B.D. This is a School of Theology, as definite in its teaching as it is definite in its aim to serve the church to which it belongs. The library of the School of Theology is rich and grows richer daily. To it belongs the famous "Thursfield Smith Collection of Wesleyana," which includes hundreds of the autograph letters of the Wesleys and other Methodist celebrities.

III. THE SCHOOL OF MEDICINE

(The Atlanta Medical College)

A Medical School of the first grade which offers courses in medicine and surgery covering four years and leading to the degree of M.D. By arrangement with the Grady Hospital, the municipal hospital of Atlanta, and the Wesley Memorial Hospital, which is a part of the University System, the School of Medicine is able to offer clinical advantages of great value to students.

IV. THE SCHOOL OF LAW

(The L. Q. C. Lamar School of Law)

A School of Law with a three years' course; using "the Case method of instruction;" having an able Faculty and a large Library, and located in the City of Atlanta, a city in which sits every grade of Court known to the judicial system of America, except the Supreme Court of the United States.

*For Bulletin giving full information concerning the University
and its several departments write*

WALKER WHITE

Secretary-Bursar, EMORY UNIVERSITY

ATLANTA

GEORGIA

Chas. J. Cofer & Bros.

Atlanta, Georgia

For fine clothes for the College Man

HATS, NECKWEAR,

HABERDASHERY, ETC.

We will be glad to serve you

20 Marietta Street

The Covington News

Printers and Binders

We print THE EMORY WEEKLY

*Fraternity Stationery, Programs,
etc., printed with neatness
and dispatch*

Covington, Georgia

TELEPHONE 159

VINING BROS.

COVINGTON, GEORGIA

We carry the BEST line of Fancy
Groceries, Confectioneries,

Fruits, Candies, etc.

Try us

The Hirshberg Co.

Atlanta, Georgia

Makers of the famous GLENDALE
LINE of Tablets, Composition
Books, etc.

The Arcade Carries Our Line

Stephenson Hardware

Company

Covington, Georgia

*We want and appreciate
your business*

W. C. SOCKWELL

CIGARS, TOBACCO, STATIONERY.

SOFT DRINKS, FRUITS, ETC.

—

Agents for

GAINESVILLE STEAM LAUNDRY

MONTAG BROTHERS

INCORPORATED

Makers of all School and College

Supplies, Tablets, Stationery

For sale at The Arcade

The Quality Shop

SMITH PRINTING CO.

PRINTING and BINDING

COVINGTON, GEORGIA

We Solicit Your Patronage

RUSSELL ELECTRIC COMPANY

lvy 211-23

51 NORTH BROAD STREET

ATLANTA, GEORGIA

*We are Wiring the New Emory University Buildings for
Electric Lights and Power*

McCORD-STEWART COMPANY

WHOLESALE GROCERS

Standing today on the same basic principles of honesty
and fairness that have characterized its thirty-four years
of successful operation

ATLANTA, GEORGIA

ROME, GEORGIA

ATLANTA OPTICAL COMPANY

119 PEACHTREE STREET

*Expert Makers and Adjusters of
Fine Eye Glasses and Spectacles*

Bring us your prescription—we guarantee results

DR. W. C. WRIGHT

DENTIST

Office over Dr. Wright's Drug Store

Crown and Bridge Work

WESLEYAN COLLEGE

MACON, GA.

An "A" grade college for women of the same rank as the best colleges for men in the South. Its A. B. and B. S. degrees given full credit by the great northern universities.

The literary curriculum broad and thorough, comprising courses in the Languages, Mathematics, Science, Philosophy, History and Economics, Pedagogy, the Bible and Home Economics.

The departments of Music, Art and Oratory maintained at the highest point of excellence.

Modern gymnasium, beautiful swimming pool, tennis courts, and ample campus for outdoor athletics.

Climate delightful all the school year, health record practically perfect.

Equipment in every department adequate and up-to-date.

Write for catalogue

C. R. JENKINS, D. D., *President*

WHEN YOU WANT BOOKS

Write to us for Catalog and Price List

We carry constantly the books of all leading publishers, and we can furnish at short notice *any books you want* at lowest prices. Why send your orders to distant stores when our stores are right in your section of country. *We put them there to serve you.* Send your orders to us at the store nearest to your home. It will be promptly filled, and we shall appreciate your business.

SMITH & LAMAR

NASHVILLE, TENN.

RICHMOND, VA.

DALLAS, TEXAS

HERNDON'S BARBER SHOP

The finest and most down-to-date

BARBER SHOP

in the United States

A. F. HERNDON, *Proprietor*

When in Atlanta give us a call

66 PEACHTREE STREET



A. H. FETTING MFG. JEWELRY CO.

Manufacturers of

Greek Letter Fraternity Jewelry

213 NORTH LIBERTY STREET

BALTIMORE, MARYLAND

Memorandum package sent to any fraternity member through
the Secretary of the Chapter

Special designs and estimates furnished on Medals, Rings, Pins, etc.,
for athletic meets, etc.

TYPEWRITERS

Typewriters rented four months for \$5 and up.
Special rates to students.

Factory Rebuilt Guaranteed Typewriters from \$18
to \$60. Full information in Catalog No. E-10.

Out of town orders, on either Rental or Purchase
basis, given careful and prompt attention.

The catalog is free and involves no obligation.
Send for it.

AMERICAN WRITING MACHINE COMPANY

48 N. PRYOR ST.

ATLANTA, GA.

GAINESVILLE STEAM LAUNDRY

GAINESVILLE, GA.

Does Laundry Work at the Highest Grade

A Trial Is All We Ask

W. C. SOCKWELL, *Agent*
OXFORD, GA.

FULLER & PORTER, *Proprietors*
GAINESVILLE, GA.

For a choice line of groceries, confec-
tions, cold drinks, cigars and tobacco

Go to

W. C. WILLIAMS

OXFORD, GEORGIA

V. Z. ANDERSON, *President*
I. J. HULSEY, *Cashier*
H. L. HITCHCOCK, *Asst. Cashier*

FIRST NATIONAL BANK

COVINGTON, GA.

The only national bank in Newton Co.

We Solicit Your Account

E. R. W. GUNN

Student Trade Appreciated

OXFORD, GEORGIA

THURSTON HATCHER

Artistic Photography



28½ WHITEHALL, ATLANTA



LOOK AT OUR PICTURES

IN THIS BOOK

\$15 and \$25

Suits and

Overcoats



BOB HAYES

\$2 and \$3

Hats

Popular

Priced

Haberdashery

All my time and thought is spent in buying and selling

Wearables for Young Men

My shop is run in the manner which will *save you money*
and give you stylish merchandise that will serve you well.
I shall be pleased if you call often.

Just BOB HAYES

"By Himself"

9 PEACHTREE ST.

ATLANTA, GA.

THE CITY PHARMACY

For the Best of Everything

PHONES 4 AND 5

COVINGTON, GEORGIA



THE REXALL STORE

SPECIAL UNIVERSITY EQUIPMENT

Our factories are equipped to make every acceptable style of seating for study halls, lecture rooms, chapels, etc.

Our representatives are trained and experienced men who save the purchaser the trouble of going over a lot of unacceptable equipment by selecting in advance those styles and qualities which will instantly meet with his approval. The services of these trained and experienced representatives are at the command of all who are interested in public seating of any kind.

CLANTON & WEBB CO.

"American Quality Public Seating"

RHODES BLDG.

ATLANTA, GA.

Wholesale ICE Retail

Domestic and Steam Coal

ATLANTIC ICE & COAL CORPORATION

PHONE 27

COVINGTON, GA.

WEAVER & PITTMAN

GARAGE

Auto Service, Gasoline, Oils and Greases

Expert Repairmen

DODGE BROTHERS

DEALERS

DAY PHONE 105

NIGHT PHONE 141 W.

COVINGTON, GEORGIA

HARRY DEATH

The Student Photographer



Discount to Students



COVINGTON, GA.

E. A. WRIGHT CO.

Office and Factory
Broad and Huntingdon Streets

Central Store
1218 Walnut Street
PHILADELPHIA, PA.

ENGRAVERS PRINTERS
STATIONERS

Manufacturers of
Class and Society Pins, Medals

Exclusive Designs in

Wedding Engraving	Stationery
Calling Cards	Year Book Inserts
Commencement	Shingles
Invitations	Photogravures
Dance Programs	Memoirs, Testimonials
Menus	Certificate Engraving
Leather Souvenirs	

LEE BROTHERS

COVINGTON, GEORGIA

THE RIGHT CLOTHES FOR ALL OCCASIONS

Hart, Schaffner & Marx Clothing

Arrow Shirts and Collars

Boyden Shoes

Classy Neckwear and Haberdashery for College Men

THE LYRIC

E. A. ARMISTEAD, *Manager*

COVINGTON, GEORGIA

Triangle

Paramount

Feature Pictures

Famous Players

High-Class Comedies

5 cents

ADMISSION

10 cents

Matinee, 3:30 p. m.

Saturday, 1 p. m.

W. M. Stephenson

Photographer

Atlanta society's premier photographer
for the past fifteen years



*Visit our new Studio in the
new Connally Building*

**That
Hitting-Catcher**

**"Charlie"
Dooin**

Clever player-manager
of the Phillies. There's
a fighter—a worker—a
quick thinker: no wonder
he likes and
Drinks

Coca-Cola
TRADE MARK

It's like him—it does for you what he does for
his team; banishes that tired feeling—chock full
of snap and vigor, absolutely
wholesome.

**Delicious—Refreshing
Thirst-Quenching**

Demand the Genuine—Refuse Substitutes

THE COCA-COLA CO.
ATLANTA, GA.

23



Free

Our new
booklet,
telling of Coca-
Cola's production
at Chattanooga, for
the asking.

Whenever you see an Arrow
think of Coca-Cola.

Robert Strickland, Jr., '12

Attorney and Counselor at Law

Associated with Brandon & Hynds

Railway, Banking and Corporation Practice

Suite 703 Empire Building

Atlanta, Georgia

Trind and Commercial Practice

Hal F. Hentz, '04, J. Neel Reed, R. S. Adler

HENTZ, REED & ADLER

ARCHITECTS

TELEPHONE, MAIN 1272

CANDLER BLDG.

ATLANTA, GA.

IN
A BOTTLE
THRU A
STRAW



SENIOR LAW STUDENTS!

What are you going to do when you graduate?

Open a Law Office?

If so your Georgia Law Books should be your first consideration

A set of Georgia Reports

Michie's Encyclopædia Digest of the Georgia Reports

Park's Annotated Georgia Code

These three sets are more necessary than your office furniture

Write us now and let us have all arrangements made by the time you graduate

THE HARRISON COMPANY

PUBLISHERS and LAW BOOKSELLERS

42-44 E. HUNTER STREET

ATLANTA, GEORGIA

SOCIAL CIRCLE

We are prepared to give Emory Men the utmost in Clothing,
Shoes, Hats, Neckwear, Haberdashery, etc.,
at the most reasonable prices

Let your next suit be from our stock of guaranteed

STYLEPLUS CLOTHES

SOCIAL CIRCLE SUPPLY COMPANY

COVINGTON, GEORGIA

EMORY UNIVERSITY ACADEMY

OXFORD, GEORGIA

Prepares boys for unconditional entrance into the best colleges and scientific schools in full conformity with present standard requirements.

If the student does not purpose to pursue a collegiate course, he will find the academy course sufficiently liberal to equip him for the practical pursuits of life.

The course embraces:

LANGUAGES: *English, Latin, Greek, French, German, Spanish.*

MATHEMATICS: *Arithmetic, Algebra, Geometry, Trigonometry.*

HISTORY: *Grecian, Roman, English, General, American, Civil Government.*

SCIENCE: *General Science, Chemistry, Physics, Declamation, Debate.*

No pains nor expense will be spared to make the school ideal in every way; and every effort possible will be made to promote the welfare of the students.

IN BODY, MIND AND MORALS

For catalog or special information, address

REV. A. M. HUGHLETT, A. M., LL. D., Principal
OXFORD, GEORGIA

BLOSSER-WILLIAMS CO.

MAKERS OF

ILLUSTRATED CATALOGS
BOOKS AND FOLDERS



OUR QUALIFICATIONS FIT ONLY
WITH THE BETTER COLLEGE
ANNUALS AND CATALOGS



63 NORTH PRYOR STREET, ATLANTA, GEORGIA

